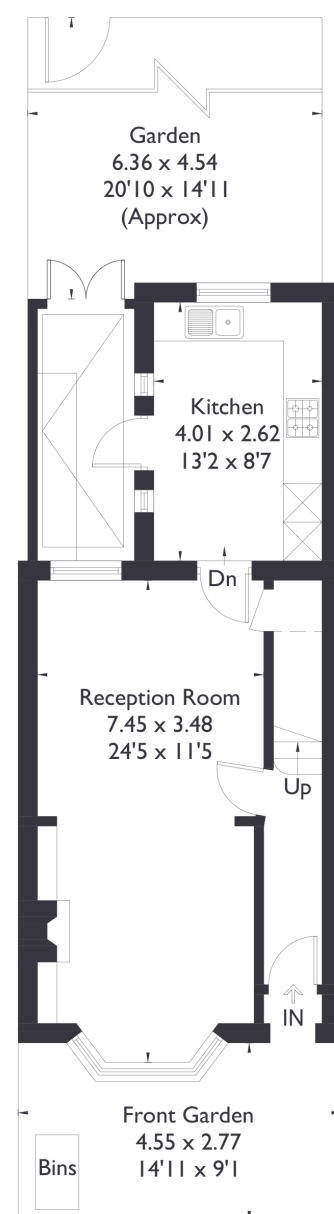
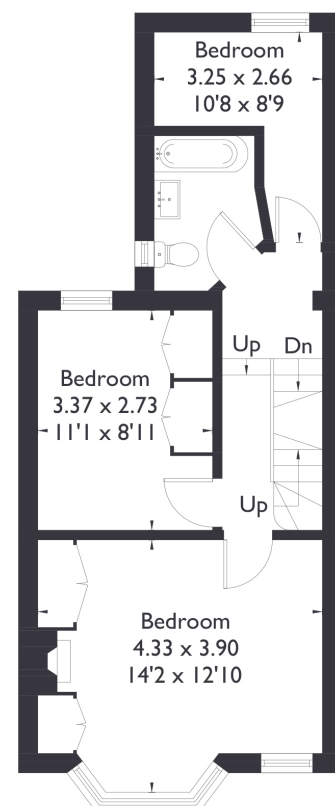


## Overdale Road, W5

Approximate Floor Area = 111.1 sq m / 1196 sq ft

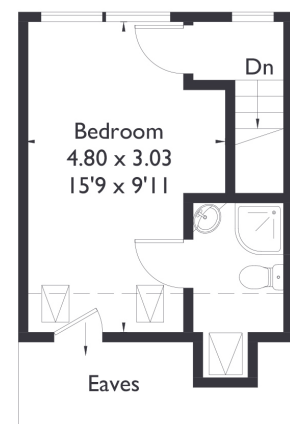


Ground Floor



First Floor

Reduced head height below 1.5m



Second Floor



### 4 BEDROOM HOUSE

## Overdale Road, W5

£995,000

Welcome to this beautifully presented four bedroom, two bathroom home, perfectly situated in the heart of Northfields, Ealing. Upon entering, you are welcomed into a bright and spacious open plan reception and dining area, ideal for both relaxing and entertaining.

Moving through, you'll find a well appointed kitchen, complemented by a convenient utility space that provides direct access to the garden.

### FEATURES

- Four Bedrooms
- Two Bathrooms
- Open Living/ Dining
- Northfields Station (2 mins)
- Fielding Primary School/Little Ealing
- EPC Rating D





4 BEDROOM HOUSE

## Overdale Road, W5

The first floor offers three bedrooms, while the top floor boasts a stunning master suite complete with an en-suite bathroom.

The property also benefits from a well maintained north facing garden, ample storage throughout, and a sought after location within the catchment area for Ealing Fields, Little Ealing, and Mount Carmel schools.

With Northfields Station and a variety of local amenities just a two-minute walk away, this home offers both comfort and convenience in an exceptional setting.

EPC Rating D.

