

2 Bedroom(s), Apartment, Leasehold

Mere Lane, Armthorpe.



- 3D Virtual Tour Available
- Two Bathrooms
- Close to Amenities and Transport Links
- Gated Development

- Open Plan Lounge, Kitchen and Dining Area
- Two Bedrooms
- Dedicated Parking Space
- No Chain

£120,000
For Sale

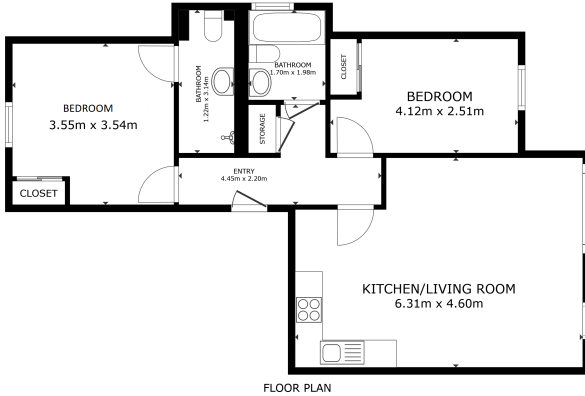
Book your viewing today Tel: 01302 247754

Owner's View

3D Virtual Tour Available- Take a closer, more detailed look around via our 3D Virtual Tour! Don't forget that you can also check availability for viewings online via a visit to our website...A beautiful gated community of stylish apartments in a quiet area of Armthorpe, Doncaster

Ground Floor

Floor Plan



GROSS INTERNAL AREA
FLOOR PLAN (INC. BALCONY)
TOTAL - 66.5 sq.m.
SIZES AND EXPRESSIONS ARE APPROXIMATE, ACTUAL MAY VARY

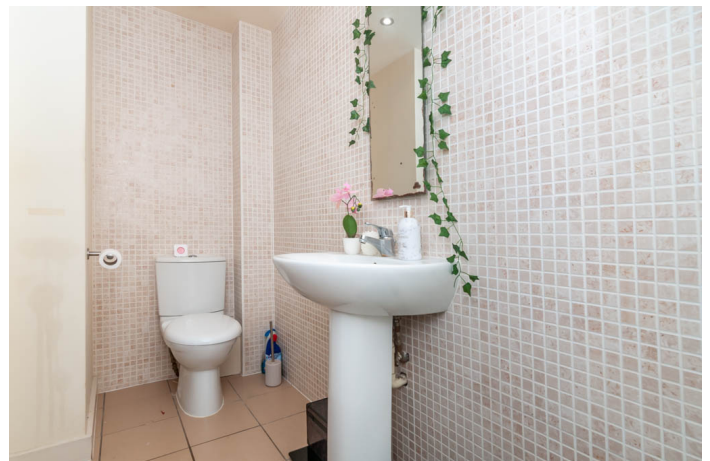
Matterport



Bedroom with En suite



Lounge Diner





Family Bathroom



Bedroom



External View



Property Information

- Council Tax Band - A
- Utilities - Mains Gas, Mains Electricity, Mains Water- Yes
- Water Meter - Yes
- Average Annual Electricity Bills -
- Average Annual Gas Bills -
- Average Annual Water Bills -
- Tenure - Leasehold
- Solar Panels - No



Space Heating System -

Approximate Heating System Installation Date - 31/08/2007

Water Heating System - Gas Boiler

Approximate Water Heating Installation Date - 31/08/2007

Boiler Location - Utility

Approximate Electrical System Installation Date -

Approximate Electrical System Test Date -

Fires/Heaters -

Permanent Loft Ladder - No

Loft Insulation - Yes

Loft Boarded out - No

Are you aware of any building defects, safety issues or hazards at the property? - No

Are you aware of any restrictions on the use of the property which would impact a buyer's general use of the property or land? For example, conservation area, listed building, rights of access, restricted covenants, etc. - No

Are you aware of any known risk to flooding at the property? - No

Are you aware of any planning permission or proposed development affecting the property or immediate locality? - No

Has the property been adapted, or benefit from any accessibility features? - No

Whilst every effort is made to ensure that the information contained in these particulars is reliable, they do not constitute or form part of an offer or any contract. The Property Hive accept no liability for the accuracy of the contents, and therefore they should be independently verified by prospective buyers or tenants before agreeing an offer. All measurements provided are approximate and should be verified before exchange of contracts. No appliances, fixtures or fittings have been tested and should be checked by the buyer before exchange of contracts to ensure they are in good working order.

Energy Performance Certificate

Energy Efficiency Rating		
	Current	Potential
<i>Very energy efficient - lower running costs</i>		
(92+) A		
(81-91) B		
(69-80) C	80	81
(55-68) D		
(39-54) E		
(21-38) F		
(1-20) G		
<i>Not energy efficient - higher running costs</i>		
England, Scotland & Wales	EU Directive 2002/91/EC	