

FOR SALE

£430,000

Gleggside, West Kirby, Wirral. CH48 6EA



A Complete One Off! This is one of those rare occasions where something truly remarkable hits our marketplace. This gem is positioned on the corner of Gleggside and Ennisdale and occupies an enormous plot making it the dream family move.

The property itself has been extended creating substantial living space to the ground and first floors, as well as creating a fifth bedroom on the second floor.

Ground Floor

Entrance Hallway

Downstairs WC

Lounge

11' 3" x 14' 5" (3.43m x 4.39m)

Second Floor

11' 3" x 22' 3" (3.43m x 6.78m)

Kitchen

12' 9" x 11' 11" (3.89m x 3.63m)

Morning Room

6' 5" x 18' 3" (1.96m x 5.56m)

First Floor

Landing

Bedroom

8' 10" x 21' 7" (2.69m x 6.58m)

En-Suite

12' 7" x 5' 1" (3.84m x 1.55m)

Bedroom

11' 4" x 14' 4" (3.45m x 4.37m)

Bedroom

11' 4" x 14' 10" (3.45m x 4.52m)

Bedroom

6' 7" x 8' 0" (2.01m x 2.44m)

Bathroom

6' 9" x 6' 4" (2.06m x 1.93m)

Second Floor

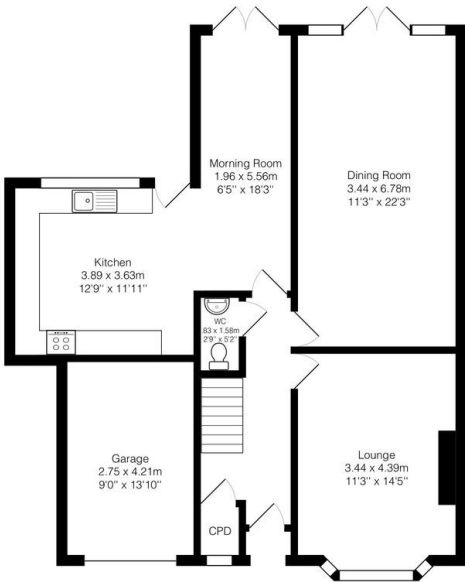
Bedroom

25' 10" x 15' 2" (7.87m x 4.62m)

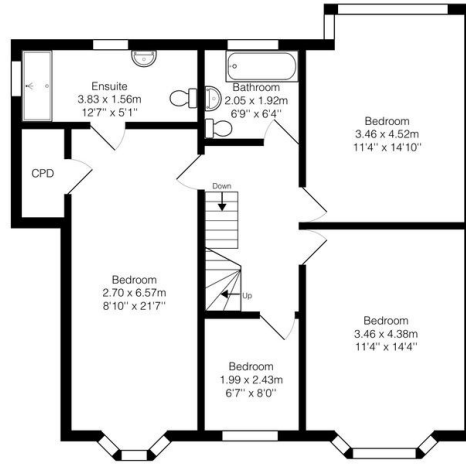




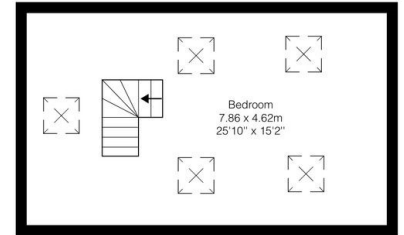
Ground Floor



1st Floor



2nd Floor



Total Area: 205.7 m² ... 2214 ft²
All measurements are approximate and for display purposes only.