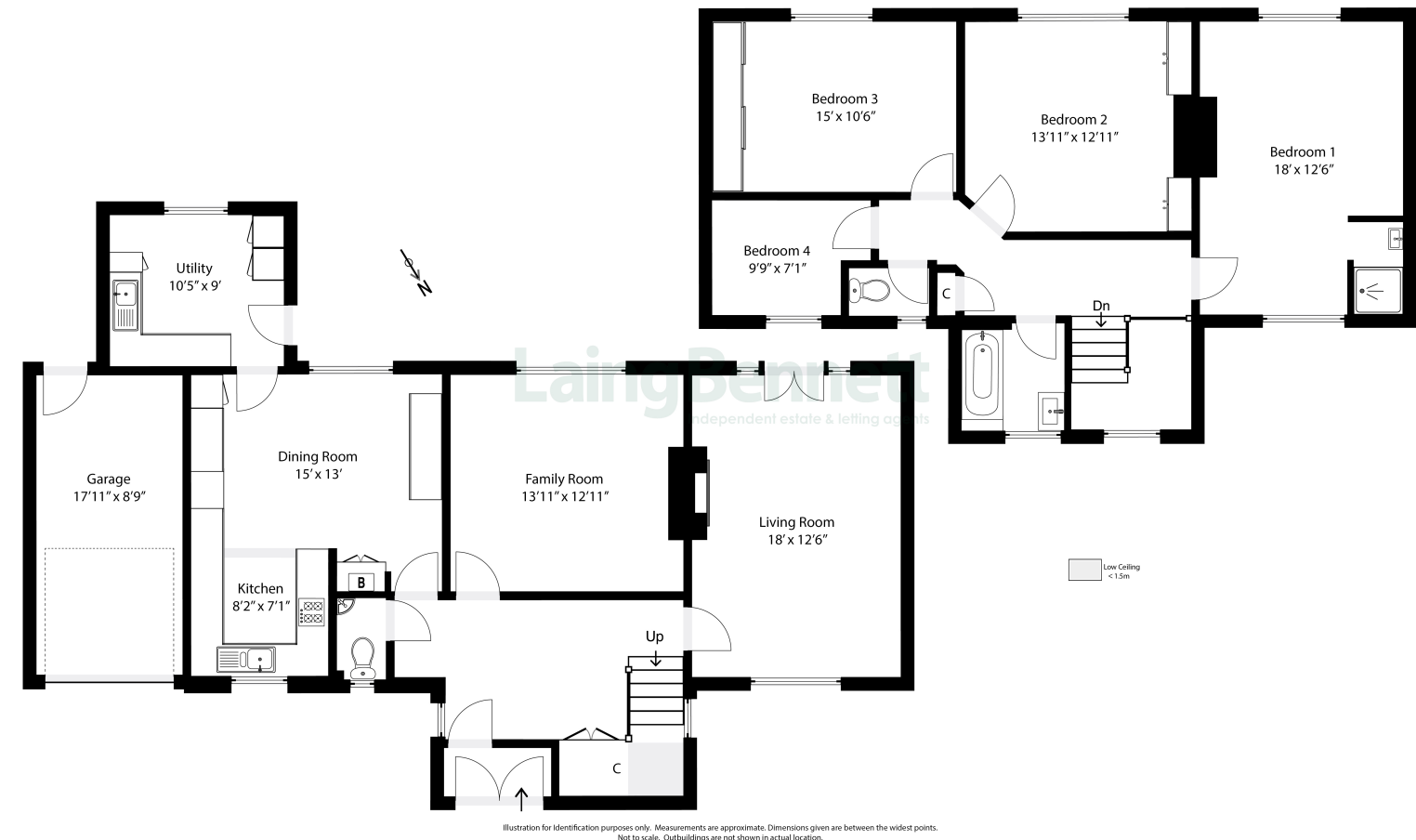




11 Cherry Garden Lane, Folkestone, Kent. CT19 4AD

Approximate Gross Internal Area (Including Low Ceiling) = 171 sq m / 1842 sq ft
Garage = 14 sq m / 156 sq ft



A fantastic opportunity to purchase a substantial four bedroom family home having bright and spacious living space that would suit the needs of any family. HIGHLY SOUGHT AFTER LOCATION - SUPERB TRANSPORT LINKS - HIGHLY REGARDED SCHOOLS CLOSE BY. EPC RATING = D

Guide Price £725,000

