



Rosenburg Road, London, W3 8FX

**Cow & Co**  
LONDON





A modern two bedroom apartment in the popular Acton Gardens development. This stunning apartment has a private balcony with extensive views across London.

Rosenburg Road is located in the popular Acton Gardens development and within 500 metres of both South Acton (Overground) and Acton Town stations (Piccadilly, District and Circle lines) providing excellent access into town. The apartment is set over 800 Sq' ft and comprises two double bedrooms, two bathrooms (one en-suite), storage area and a fantastic open plan kitchen/living area filled with natural light from the floor to ceiling windows and balcony doors leading to a large balcony.

Marvell Court is located within short walking distance of South Acton station (Overground) and Acton Town station (Piccadilly, District and Circles lines) as well as the M4/A4. Chiswick Park Station and The High Road is also within short walking distance

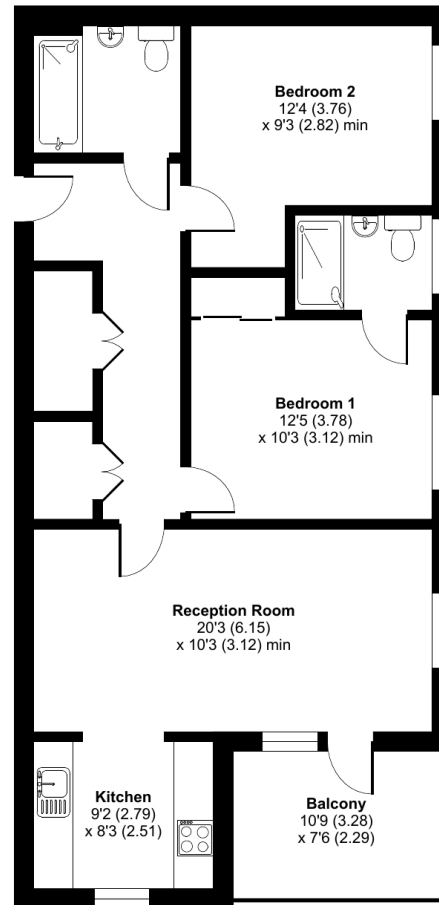


- Two bedroom apartment
- Two bathrooms (one en-suite)
- Balcony
- 3rd floor
- Open plan kitchen
- Long lease
- Short walk to Chiswick

# Marvell Court, Rosenberg Road, London, W3

Approximate Area = 805 sq ft / 74.8 sq m

For identification only - Not to scale



THIRD FLOOR



Floor plan produced in accordance with RICS Property Measurement Standards incorporating International Property Measurement Standards (IPMS2 Residential). © nchecon 2024. Produced for Cow & Co Properties Ltd. REF: 1078366

Tel: 0208 065 0010  
Email: [thehub@cowandco-london.com](mailto:thehub@cowandco-london.com)  
Web: [cowandco-london.com](http://cowandco-london.com)

Agents note: All measurements are approximate and whilst every attempt has been made to ensure accuracy they are for general guidance only and must not be relied on. The fixture and fittings referred to have not been tested and therefore no guarantee can be given that they are in working order. Internal photographs are reproduced for general information and it must not be inferred that any item shown is included with the property.

# Cow & Co

LONDON