



GREGORY BROWN
RESIDENTIAL SALES & LETTINGS

£700,000 Freehold
FOR SALE



Falaise, Egham, Surrey, TW20

0BB

SUBSTANTIAL THREE BEDROOM DETACHED PROPERTY OFFERING GREAT SCOPE FOR IMPROVEMENT/FURTHER EXTENSION (S.T.R.P.P), SITUATED ALONG THIS SOUGHT AFTER NO-THROUGH ROAD IDEALLY LOCATED FOR EASY ACCESS TO EGHAM TOWN CENTRE, MAINLINE TRAIN STATION & LOCAL MOTORWAY NETWORKS. The property benefits from a spacious lounge/diner, fitted kitchen/breakfast room with separate utility, downstairs W.C, three double bedrooms, family bath/shower room with separate W.C, large secluded rear garden, garage and off-street parking. No Onward Chain. Viewings Highly Recommended!

Gregory Brown

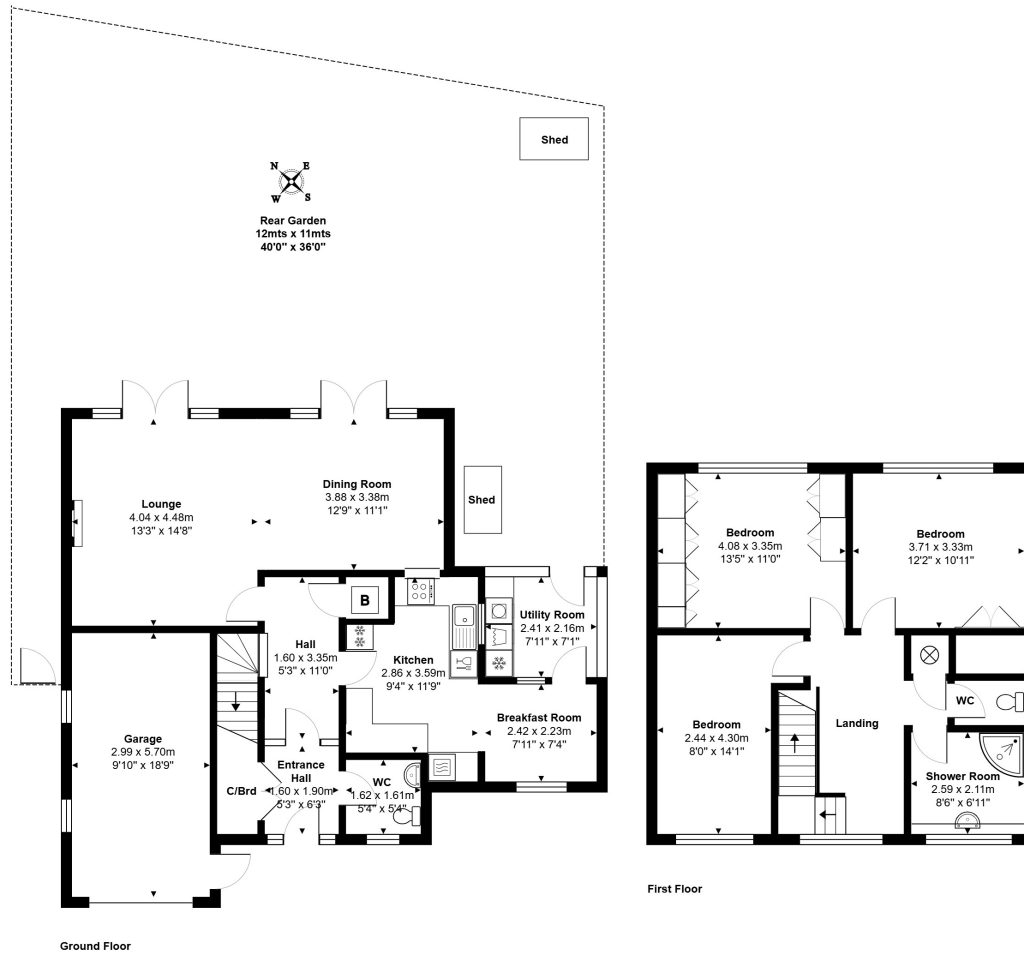
127a, High Street, Staines-upon-Thames, TW18 4PD

01784 451458

staines@gregory-brown.co.uk

ROOM DESCRIPTIONS

FLOORPLAN



Total Area: 152.6 m² ... 1643 ft²

All measurements are approximate and for display purposes only.

127a, High Street, Staines-upon-Thames, TW18 4PD

01784 451458

staines@gregory-brown.co.uk