



## Meads Lane, SEVEN KINGS

£625,000

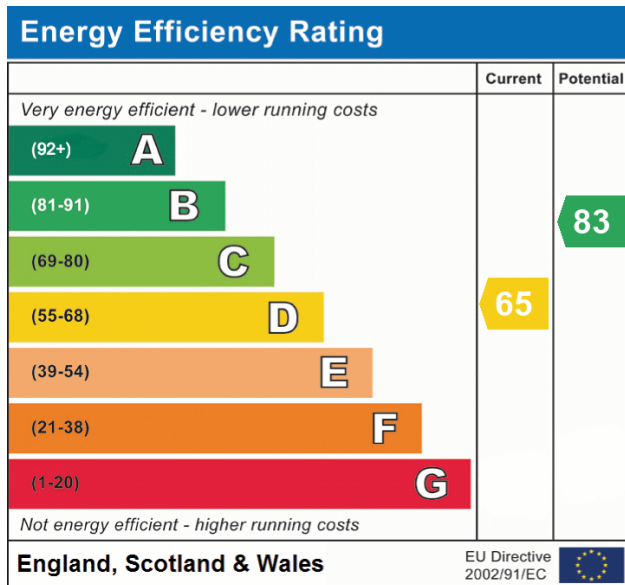
For sale is this terraced property, boasting six bedrooms, two bathrooms, a kitchen, and a single reception room. Currently functioning as an HMO, we understand the current rent being achieved is £2,600PCM. Conveniently located near public transport links, local amenities, and parks, this property offers excellent opportunities for investors. Please call our sales team for an appointment to view.

- SIX BEDROOM HMO
- INVESTORS ONLY
- EPC - D
- FREEHOLD
- COUNCIL TAX - BAND C

**AGENTS NOTE**

As part of the service we offer, we may recommend ancillary services to you which we believe may help you with your property transaction. We wish to make you aware, that should you decide to use these services, we will receive a referral fee. For full and detailed information please visit 'terms and conditions' on our website.

**EPC**



**What's Next?**

If you would like to view or make an offer please contact Payne & Co on 020 8518 3000

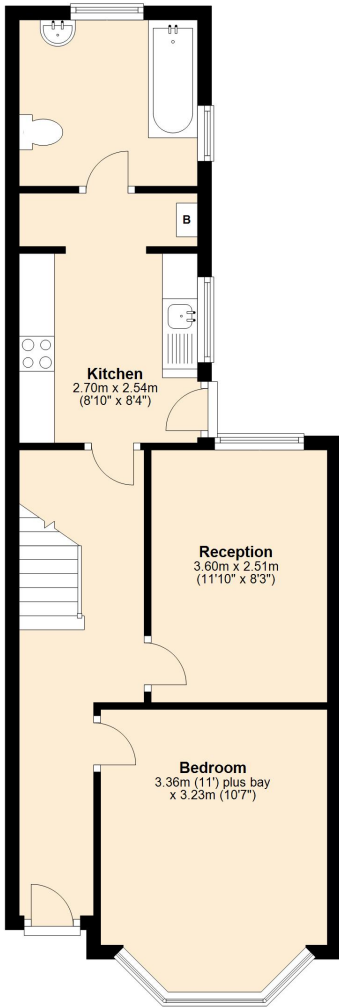
**Disclaimer**

**Consumer Protection from Unfair Trading Regulations 2008 and the Business Protection from Misleading Marketing Regulations 2008:**

Every effort has been made to ensure that consumers and or businesses are treated fairly and provided with accurate material information as required by law. It must be noted however that the agent has not tested any apparatus, equipment, fixture, fittings or services and does not verify they are in working order, fit for their purpose, or within the ownership of the seller or landlord, therefore the buyer or tenant must assume the information given is incorrect. Neither has the agent checked the legal documentation to verify the legal status of the property. A buyer or tenant must assume information is incorrect until it has been verified by their own solicitors or other advisers. Nothing concerning the type of construction, condition of the structure or its surroundings is to be implied from any image of the property.

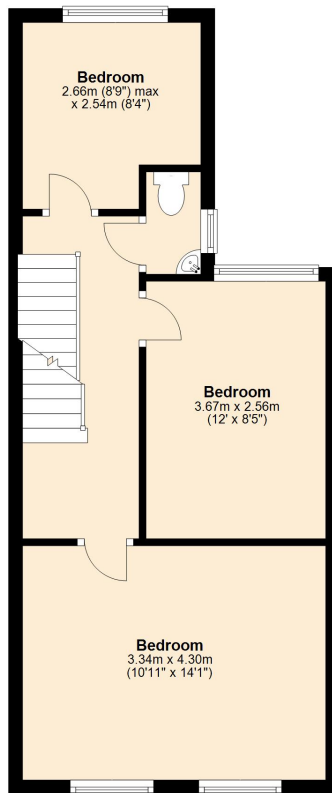
### Ground Floor

Approx. 45.9 sq. metres (494.3 sq. feet)



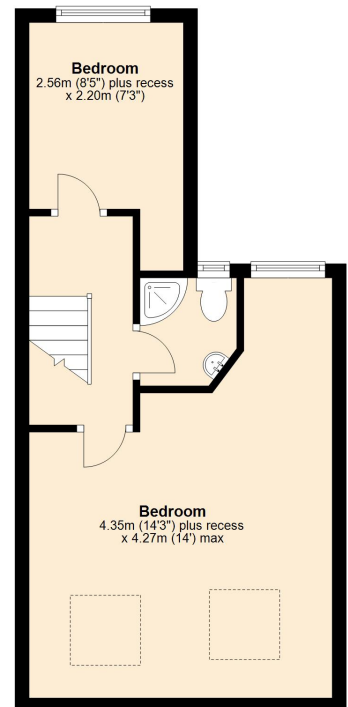
### First Floor

Approx. 40.0 sq. metres (430.8 sq. feet)



### Second Floor

Approx. 33.7 sq. metres (363.0 sq. feet)



Total area: approx. 119.7 sq. metres (1288.1 sq. feet)