

# FOR SALE

---

Ellesmere Road,  
Chiswick, W4

---

Flat  
Grove Park

---

£650,000 sh of fh

---

2  2  1 



**horton  
andgarton**

SALES / LETTINGS / PROPERTY MANAGEMENT

hortonandgarton.co.uk | Sales 020 3989 6464 | Lettings 020 3989 5454  
161 Chiswick High Road, London, W4 2DT



# FOR SALE

---

Ellesmere Road,  
Chiswick, W4

---

Flat  
Grove Park

---

£650,000 sh of fh

---

2  2  1 



**horton  
andgarton**

SALES / LETTINGS / PROPERTY MANAGEMENT

hortonandgarton.co.uk | Sales 020 3989 6464 | Lettings 020 3989 5454  
161 Chiswick High Road, London, W4 2DT



# FOR SALE

Ellesmere Road,  
Chiswick, W4

Flat  
Grove Park

£650,000 sh of fh

2  2  1 

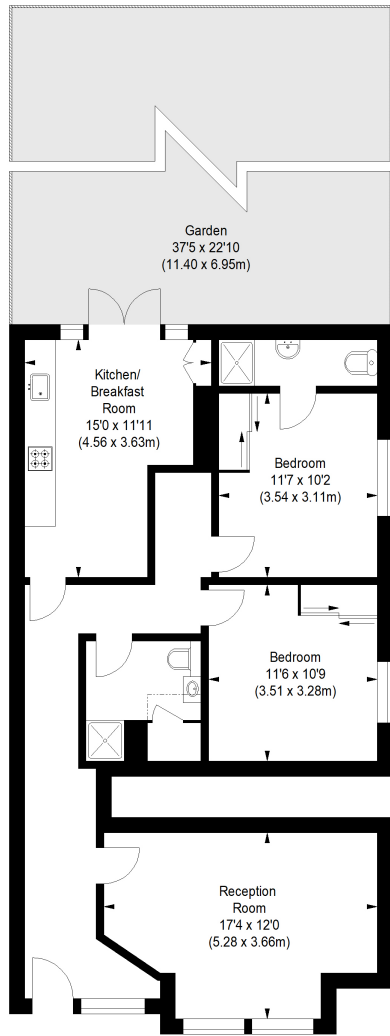


**horton  
andgarton**

SALES / LETTINGS / PROPERTY MANAGEMENT

hortonandgarton.co.uk | Sales 020 3989 6464 | Lettings 020 3989 5454  
161 Chiswick High Road, London, W4 2DT





GROUND FLOOR



**ELLESMERE ROAD, W4**

APPROXIMATE GROSS INTERNAL AREA

**881 Sq' / 81.84 SqM**

**horton  
andgarton**

Not to scale, for guidance only and must not be relied upon as a statement of fact.  
All measurements and areas are approximate only



Ground floor garden flat | Two bedrooms - Two bathrooms | 881 Sq' - 81.84 SqM | Southfacing garden | EPC rating C | Grove Park



hortonandgarton.co.uk

Sales 020 3989 6464

Lettings 020 3989 5454

161 Chiswick High Road, London, W4 2DT