



Landseer Road, Enfield, Greater London, EN1 1DP

£475,000

- **THREE BEDROOM TERRACED HOME**
- **DOWNSTAIRS WC**
- **0.3MILES FROM OVERGROUND STATION**
- **TWO RECEPTION ROOMS**

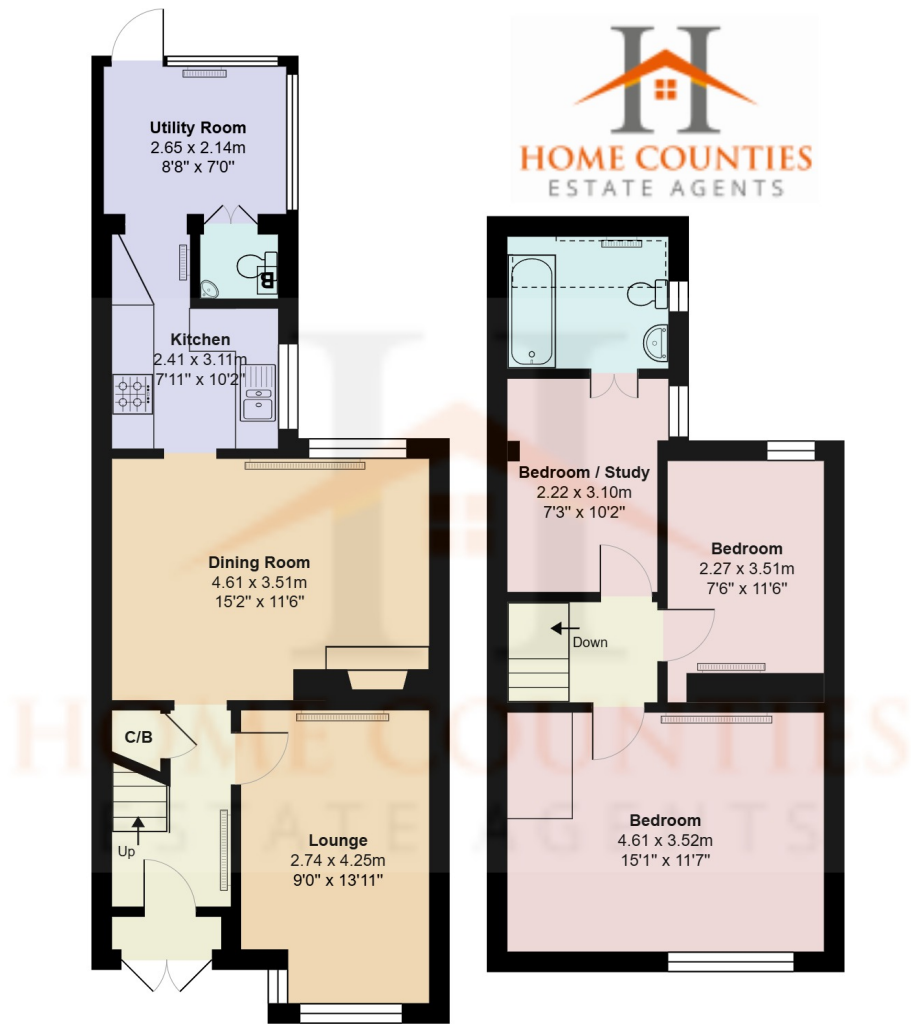
Landseer Road, Enfield, Greater London, . EN1 1DP

£475,000 Freehold

This charming two / three-bedroom terraced home in Bush Hill Park offers an excellent location for commuters, with the Overground station just 0.3 miles away. A variety of shops and restaurants are also within walking distance, adding to the area's convenience.

The property features a welcoming front porch, a bright reception room, and a spacious dining room complete with a cozy log burner fireplace. The kitchen leads to a utility room, which includes the convenience of a downstairs WC. Upstairs, you'll find three generously sized double bedrooms and a well-appointed family bathroom.

The well-maintained garden boasts a paved patio, mature shrubbery borders, and a shed at the rear. Fully double-glazed and equipped with gas central heating throughout, this home is both comfortable and energy-efficient. With a selection of excellent local primary and secondary schools nearby, this property presents a fantastic opportunity for a growing family.



Landseer Road, Enfield EN1

Total Area: 89.3 m² ... 961 ft²

All measurements are approximate and for display purposes only

