

Topsails, The Quay, APPLEDORE
£495

John
Smale & Co.

Chartered Surveyors | Residential & Commercial Consultants



- Ground floor apartment
- Storage heating
- Water bills included

- Studio Room with Study
- Shower room & separate WC
- Available early December

A ground floor apartment with a spacious studio room, kitchen and study area together with a shower room and separate wc, located in the historic heart of this picturesque fishing village.

There are some excellent local pubs, cafes and restaurants within a short stroll, together with a library, local shops and a delicatessen. Appledore is famous for its September Book Festival, Rowing pursuits and excellent local music scene.

Bideford is approximately three miles away with its mixed and varied facilities.

Hallway

Communal Hallway, door to flat, fitted coat rail and mirror, doors to:

Separate Cloaks

Low level wc, vanity wash basin with tiled splash back

Shower Room

With shower cubicle, Triton shower unit, extractor fan

Studio Room

2.74m x 4.43m (9' 0" x 14' 6") Twin windows to the side, storage heater, electric meter (key meter)

Kitchen

2.31m x 3.67m (7' 7" x 12' 0") Single drainer sink unit, wall and base units, electric cooker, part tiled walls, work surfaces

Study

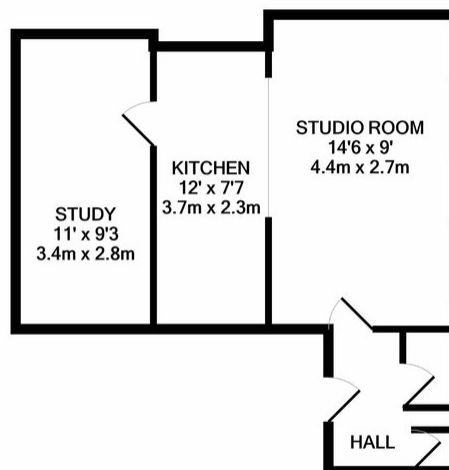
2.82m x 3.35m (9' 3" x 11' 0") Spacious area

Services

Mains electric, water and drainage

Directions

Directions: Top Sails is located on the corner of the Quay and Bude Street, close to the library.



TOTAL APPROX. FLOOR AREA 341 SQ.FT. (31.7 SQ.M.)
Made with Metropix ©2020

At John Smale & Co we don't just sell houses! ...

Contact us now for information on all of our other services including Residential and Commercial Lettings, Property Management, Commercial Property Sales, Probate Valuations, Independent Financial Advice, Energy Performance Certificates, Auctions and New Homes.

These particulars have been prepared for guidance only. We have not carried out a detailed survey, not tested the services, appliances or specific fittings. Floor plans are not drawn to scale unless stated, measurements and distances are approximate only. Do not rely on them for carpets and furnishings. Photographs are not necessarily current and you should not assume that contents shown are included in the sale.