

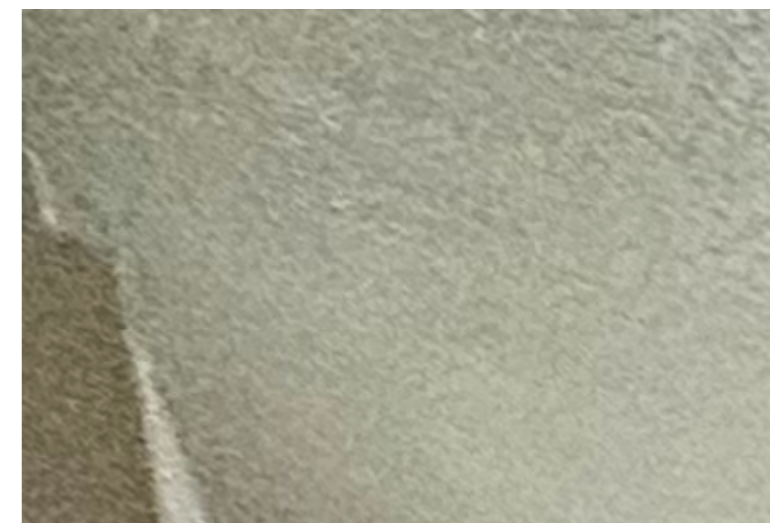


Day & Co
ESTATE AGENTS

28 Cavendish Street

Keighley

BD21 3RG



1 Aspen Close, Long Lee,
Keighley, West Yorkshire, BD21
4TW

£199,995

T: 01535 664609

W: www.dayandcoestateagents.co.uk

E: keighley@dayandcoestateagents.co.uk

- DETACHED HOUSE
 - POPULAR AREA
 - DRIVE & GARAGE
- THREE BEDROOMS
 - FRONT & SIDE GARDEN
 - EPC RATING D

SUMMARY

** THREE BEDROOM DETACHED HOUSE, SPACIOUS KITCHEN, CONSERVATORY, POPULAR AREA, LOCAL PRIMARY SCHOOL NEARBY, FRONT & SIDE GARDENS, DRIVE & GARAGE, VIEWING ADVISED, EPC RATING D **

FULL DESCRIPTION

Offered for sale is this well presented, three bedroom detached home situated in the popular area of Long Lee, handily placed for access to the local primary school. The accommodation is set over 2 floors, has a front and side gardens along with a detached garage to the side. An internal inspection is advised to fully appreciate this property which has accommodation briefly comprising -

Ground floor - Entrance Hall with storage cupboard. Spacious Living room with windows to the front and side elevations, good sized built in storage cupboard. Kitchen with range of modern base & wall units incorporating gas hob, electric double oven, extractor hood, plumb for washing machine and dishwasher, patio doors leading to the conservatory. Conservatory with double glazed window and door.

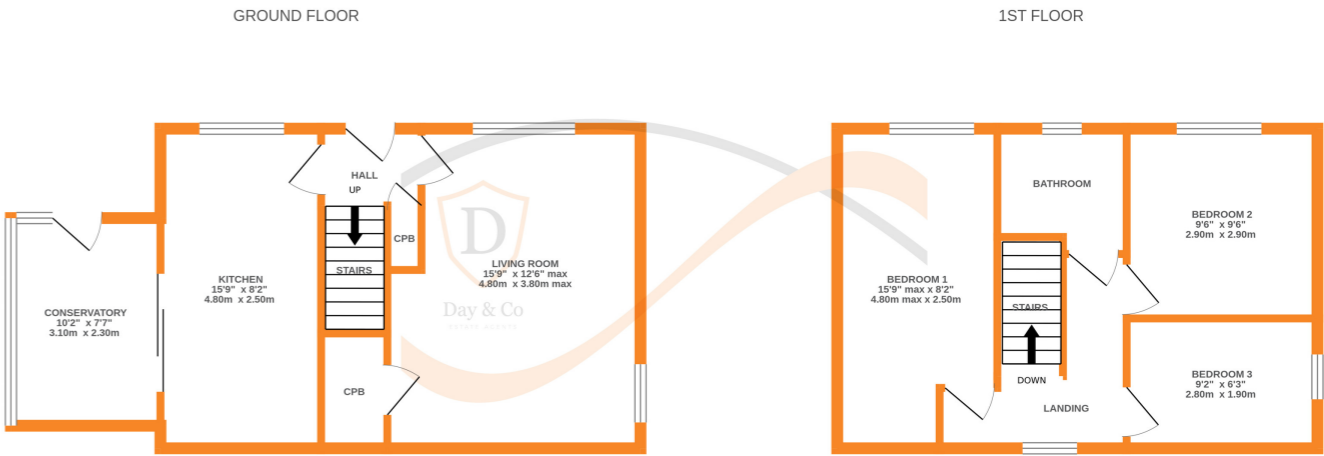
First Floor - Landing with window to the rear. Three bedrooms. Completing the accommodation is the house bathroom with suite comprising of a bath with shower over, w.c., wash basin and window to the front.

Gas central heating and double glazing.

Outside - There are gardens to the front and side. Drive, detached garage.

EPC RATING D

Any floor plans are for guidance and illustrative purposes only. While we strive for accuracy, we cannot guarantee the precise layout, dimensions, or details shown. Any measurements or boundaries should be verified through the title deeds. We accept no liability for any loss or damage arising from reliance on this information.



Whilst every attempt has been made to ensure the accuracy of the floorplan contained here, measurements of doors, windows, rooms and any other items are approximate and no responsibility is taken for any error, omission or mis-statement. This plan is for illustrative purposes only and should be used as such by any prospective purchaser. The services, systems and appliances shown have not been tested and no guarantee as to their operability or efficiency can be given.
Made with Metropix ©2026