



Bedford Road

Holwell, Hitchin,
Hertfordshire, SG5 3RX
Guide Price £875,000

country
properties

Nestled amidst the serene beauty of rural splendor, we proudly present a breathtaking masterpiece – a brand new, three/four bedroom detached family home. Majestically perched to offer panoramic views of the undulating countryside, this property promises an unparalleled living experience, marrying luxury with tranquility.

Key Features:

Spacious Living: Step into a world of comfort and elegance, where each corner resonates with warmth and sophistication. The expansive living spaces offer ample room for family gatherings, entertainment, and relaxation.

Modern Design: Designed with meticulous attention to detail, this home boasts a contemporary aesthetic that seamlessly integrates with its natural surroundings. From the sleek architecture to the high-quality finishes, every aspect exudes refined taste.

Three/four Bedrooms: Retreat into your private oasis within the comfort of four generously sized bedrooms. Each room is thoughtfully crafted to provide sanctuary, offering a peaceful haven for restful nights and rejuvenating mornings.

Breathtaking Views: Indulge in the captivating vistas that stretch as far as the eye can see. Whether it's sunrise or sunset, every moment is enhanced by the scenic beauty of the open countryside, creating a sense of serenity and awe-inspiring wonder.

Tranquil Location: Tucked away from the hustle and bustle of city life, this property offers the perfect escape into nature's embrace. Enjoy the blissful tranquility of rural living while still being within easy reach of essential amenities and conveniences.

Gourmet Kitchen: The heart of the home beckons with a gourmet kitchen that is as functional as it is stylish. There is a choice of kitchen's, equipped with top-of-the-line appliances and ample storage space, it invites culinary adventures and memorable meals shared with loved ones.

Outdoor Oasis: Embrace the great outdoors in your own garden retreat. Whether it's savoring a morning coffee on the patio or hosting al fresco gatherings amidst lush greenery, the outdoor space is designed for relaxation, recreation, and making lasting memories.

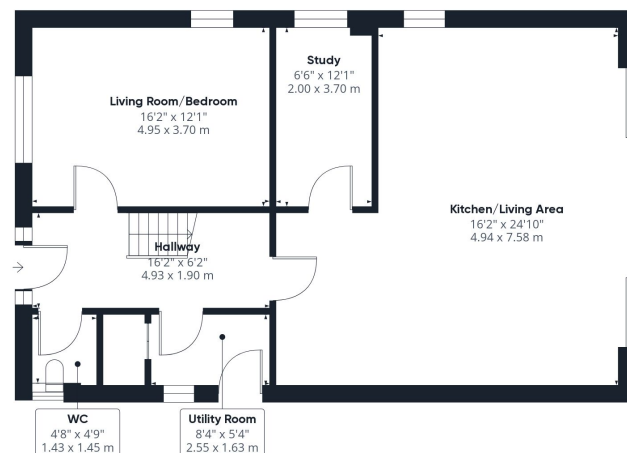
Don't miss this rare opportunity to own a slice of countryside paradise. Experience the epitome of luxurious rural living and make this stunning property your forever home. Contact us today to schedule a viewing and embark on a journey to your dream lifestyle.

- A superb detached family home with amazing countryside views
- Wonderful rural location tucked away from the main road
- Beautiful kitchen family space with bi-fold doors out to rear garden
- Principal bedroom with breathtaking far reaching views
- Rear garden has been extended out to the left hand side.
- 3.9 miles, 11 mins drive to Hitchin railway station (as per Google Maps)
- NO ONWARD CHAIN

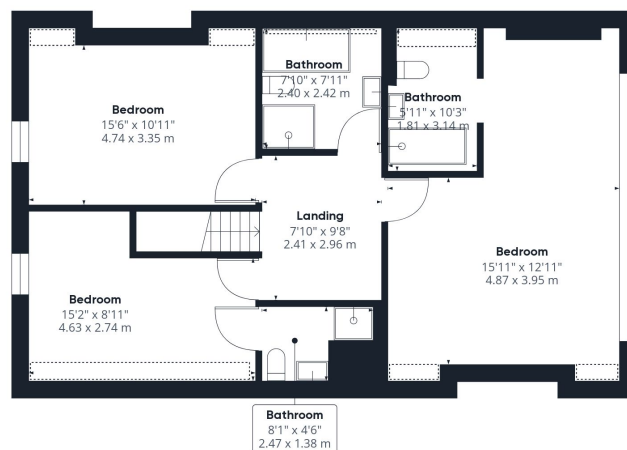








Floor 0



Floor 1

Approximate total area⁽¹⁾

1865.74 ft²

173.33 m²

Reduced headroom

45.01 ft²

4.18 m²

(1) Excluding balconies and terraces

Reduced headroom
(below 1.5m/4.92ft)

While every attempt has been made to ensure accuracy, all measurements are approximate, not to scale. This floor plan is for illustrative purposes only.

GIRAFFE360

All measurements are approximate and quoted in metric with imperial equivalents and for general guidance only and whilst every attempt has been made to ensure accuracy, they must not be relied on. The fixtures, fittings and appliances referred to have not been tested and therefore no guarantee can be given and that they are in working order. Internal photographs are reproduced for general information and it must not be inferred that any item shown is included with the property. For a free valuation, contact the numbers listed on the brochure

Viewing by appointment only

Country Properties | 6, Brand Street | SG5 1HX

T: 01462 452951 | E: hitchin@country-properties.co.uk

www.country-properties.co.uk

country
properties

country
properties