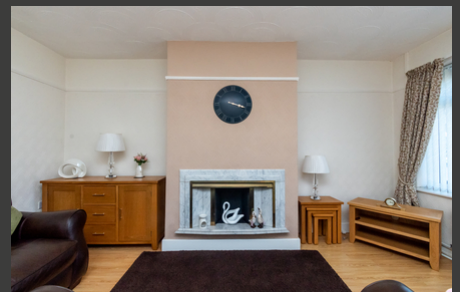


Statham Avenue, Warrington, WA2 9DP

£150,000

Offers In Excess of



Introducing this charming two-bedroom mid-terrace property, which offers comfortable living in a convenient location. Situated within close proximity to motorway links M6/M62, local amenities and Warrington Town Centre - this home provides easy access to both essential facilities and recreational opportunities.



x 2



x 1

One of the standout features of this property is the driveway parking, offering a convenient and secure space for your vehicles. The modern kitchen and shower room provide a contemporary feel. The property has been meticulously maintained and is beautifully presented, creating a welcoming and comfortable atmosphere.

See more of this house at ashtons.net

