



BarrettMove



10 Ragmans Close, Marlow, Buckinghamshire SL7 3QW
Guide Price £795,000 - Freehold



PROPERTY SUMMARY

Barrett Move presents this spacious, detached family home with four double bedrooms tucked in a quiet cul de sac in Marlow Bottom. The property has a south east facing garden with lovely views over open fields.

POINTS OF INTEREST

- Four double bedrooms
- Planning permission previously granted for extending to make a Master Suite
- Utility room
- Tucked away in a quiet cul de sac
- Off street parking and garage
- Two driveways
- Lovely view over open fields
- Beautifully presented
- In catchment for Burford primary, Great Marlow and excellent grammar schools
- Close to woodland walks



Approximate Gross Internal Area 1742 sq ft - 162 sq m

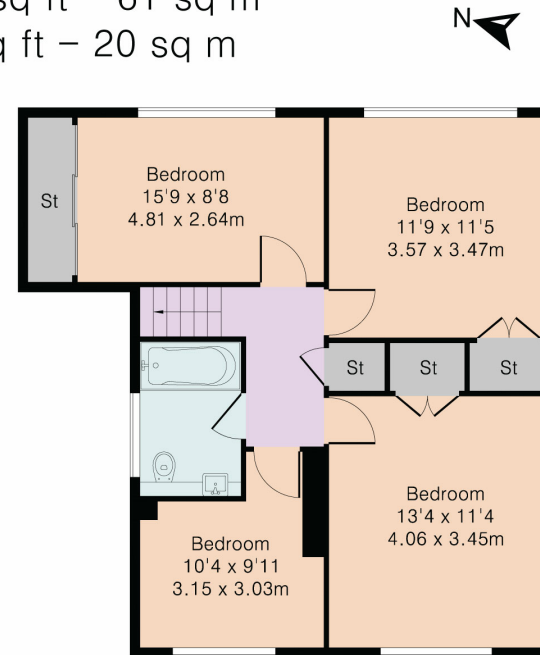
Ground Floor Area 873 sq ft – 81 sq m

First Floor Area 659 sq ft – 61 sq m

Garage Area 210 sq ft – 20 sq m



Ground Floor



First Floor



Although Pink Plan Ltd ensures the highest level of accuracy, measurements of doors, windows and rooms are approximate and no responsibility is taken for error, omission or misstatement. These plans are for representation purposes only as defined by RICS code of measuring practise. No guarantee is given on total square footage of the property within this plan. The figure icon is for initial guidance only and should not be relied on as a basis of valuation.



Energy Efficiency Rating		Current	Potential
Very energy efficient - lower running costs			
(92+)	A		
(81-91)	B		
(69-80)	C		
(55-68)	D		
(39-54)	E		
(21-38)	F		
(1-20)	G		
Not energy efficient - higher running costs			
England, Scotland & Wales		70	80
		EU Directive 2002/91/EC	