



Grove Green  
Weaving  
Maidstone  
Kent  
ME14

Offers In Excess Of £700,000

bettermove



# Grove Green

## Maidstone

Bettermove are proud to present this 3 bedroom Grade II Listed detached house in Weaving.

This property benefits from central heating throughout, and has single glazing, with ample off road parking available for multiple vehicles.

The council tax band is F.

The interior of this beautifully presented, highly characteristic property comprises a spacious, open plan living room, modern fitted kitchen, with island, dining room and study on the ground floor. The first floor consists of three good sized bedrooms, with one en-suite and a family bathroom. Set on a large plot of land, equating to approximately 2/3 acres, the exterior boasts large, private grounds, perfect for enjoying the summer months, the exterior also includes the original well for the property, planning permission for a pool house, and a jacuzzi, available by separate negotiation.

Located in the quiet village of Weaving, Maidstone, the property is close to a range of amenities, including shops, supermarkets, restaurants and pubs. Excellent transport links can be found from Bearsted Railway Station, a variety of local bus routes, and quick access to the M20.

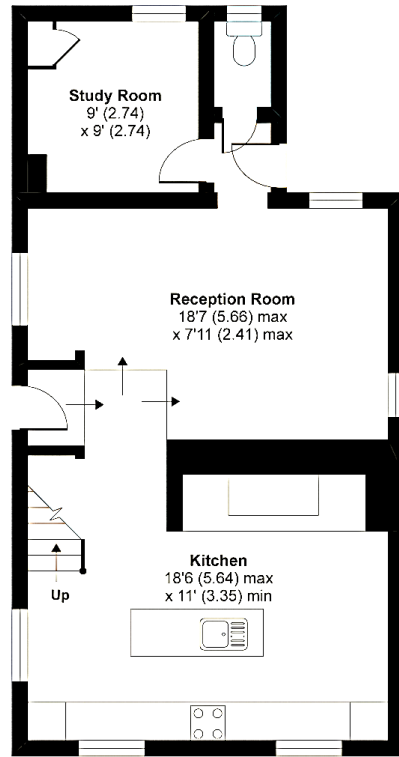
This exciting opportunity should not be missed! All enquiries can be made through 0330 004 0050.



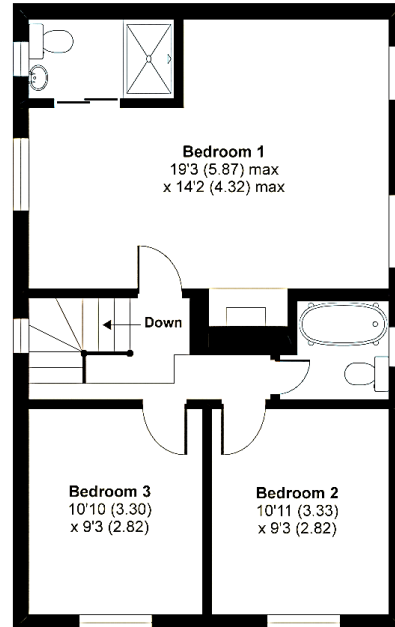
# Grove Green, Weaving, Maidstone, ME14

Approximate Area = 1253 sq ft / 116.4 sq m

For identification only - Not to scale



GROUND FLOOR



FIRST FLOOR





20-22 Bridge End, Leeds, LS1 4DJ  
t: 0330 004 0050 e: [hello@bettermove.co.uk](mailto:hello@bettermove.co.uk)  
[www.bettermove.co.uk](http://www.bettermove.co.uk)