



## 20 Meadow Crescent, Douglas, Isle of Man. IM2 1NJ

Detached Family Home in a very sought after location. This 4 bedroom home has a wonderful, large lounge as well as a modern well appointed kitchen/breakfast diner. A beautiful sun room with lantern roof finished off the downstairs of the property with additional utility room and small garage suitable for bike storage.



£499,950 Freehold



## PROPERTY DESCRIPTION

---

**ACCOMODATION** Located at 20 Meadow Crescent in Saddlestone, this detached family home is situated in a highly sought-after location just outside Douglas. The ground floor features a sunny front-facing lounge with two bay windows and a charming cast iron wood burner, creating a cozy and inviting atmosphere. One of the property's standout features is the modern kitchen, complete with a breakfast bar, perfect for family meals and casual dining. A recent extension has added a sunroom with a lantern roof, providing an ideal space for entertaining guests or relaxing with family. Additional ground floor amenities include a utility room with ample storage, a small garage store, and a convenient W.C.

Upstairs, the home offers four bedrooms, two being generously sized doubles, providing ample space for a growing family. The shower room, equipped with underfloor heating, adds a touch of luxury and comfort. The fully enclosed back garden is a beautiful, sunny space, perfect for outdoor activities and enjoying the warmer months. This well-maintained property combines modern features with a functional layout, making it an excellent choice for families seeking a comfortable and stylish home in a desirable neighborhood.

**INCLUSIONS** Floor coverings, Light fittings, Blinds, Wardrobes.

## FEATURES

---

- Open House Wednesday 24th 12pm till 2pm
- Detached 4 Bedroom House
- Stunning Modern Kitchen/Diner
- Beautiful Sun Room Extension with Lantern Roof
- 4 Bedrooms plus Shower Room and W.C.
- Utility Room plus Small Garage
- Well Maintained and Enclosed Back Garden
- Sought After Location
- Gas Fired Central Heating & Double Glazed



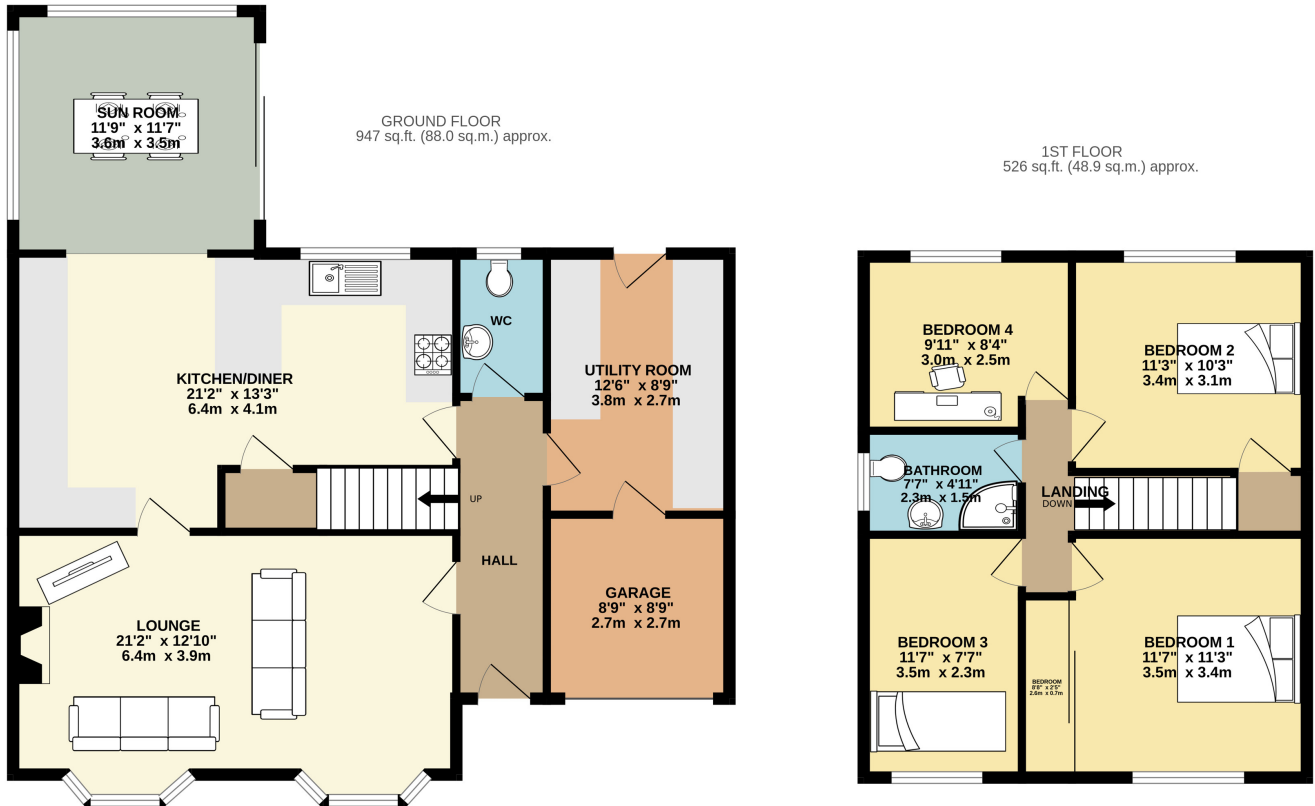


## Property Images

---



# FLOORPLAN



TOTAL FLOOR AREA: 1473 sq.ft. (136.9 sq.m.) approx.

Whilst every attempt has been made to ensure the accuracy of the floorplan contained here, measurements of doors, windows, rooms and any other items are approximate and no responsibility is taken for any error, omission or mis-statement. This plan is for illustrative purposes only and should be used as such by any prospective purchaser. The services, systems and appliances shown have not been tested and no guarantee as to their operability or efficiency can be given.  
Made with Metropix ©2024

**DISCLAIMER:** Whilst Manxmove Ltd believe that these details are correct, neither Manxmove Ltd or their clients guarantee their accuracy in any way. Consequently, these details are not to be used to form part of any legally binding contract. Prospective purchasers or tenants are advised to visit this property to satisfy themselves as to the correctness of these details. Please note, we use wide angle camera lenses in order to show as much of each room as possible. This is not intended to mislead any prospective purchasers or tenants in any way and an honest verbal description is always available prior to viewing if required.