

**7 Bedroom(s), Detached House, Freehold**

**Bawtry Road, Bessacarr.**



- 3D Virtual tour available
- Open plan lounge and dining room
- Ground Floor W/C
- Six bedrooms in the main home three having access to en suites
- Close by to Racecourse and Lakeside

- No Chain
- Separate sitting room
- Two Storey one bedroom annexe with kitchen and lounge
- Driveway allowing for multiple cars to park
- Sought after location Just off Bawtry Road

**£550,000**  
**For Sale**

*Book your viewing today* Tel: 01302 247754

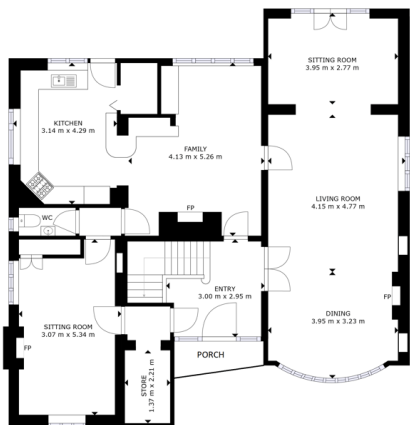


## Owner's View

3D Virtual Tour Available- Take a closer, more detailed look around via our 3D Virtual Tour! Don't forget that you can also check availability for viewings online via a visit to our website... The chance to purchase this substantial detached property located on the prestigious Bawtry Road in Bessacarr. Featuring 7 bedrooms, 6 bathrooms and 3 reception rooms, this is the perfect property for those with a large family or living with extended family. The property also benefits from a self contained annex. The annex comprises of bedroom space, living space, a kitchen and its own private bathroom. The current owners have capitalised on this brilliant asset by renting this space out through Airbnb, thus generating an income. Homeworkers, self employed businessowners and others alike could also benefit from this great space by turning it into a work space. Bawtry Road is located close to a plethora of amenities, such as leisure centres, supermarkets, cafes, good schools, transport links, and the city centre.

## Ground Floor

### Floor Plan



1ST FLOOR

GROSS INTERNAL AREA  
1ST FLOOR: 121 m<sup>2</sup>; 1ST FLOOR: 187 m<sup>2</sup>  
TOTAL: 308 m<sup>2</sup>

SIZES AND DIMENSIONS ARE APPROXIMATE, ACTUAL MAY VARY

Matterport

## Entrance Hallway



## Open Plan Kitchen Diner And Sitting Room





## Open Plan Lounge And Dining Room



## Sitting Room

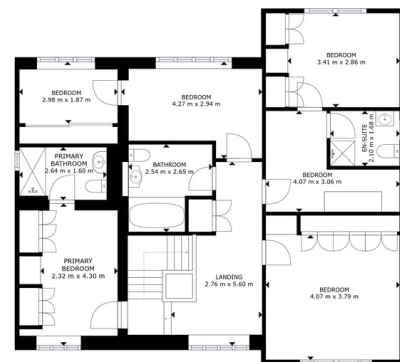


## Ground Floor W/C



## First Floor

## Floor Plan



2ND FLOOR

GRAND TOTAL AREA  
1ST FLOOR: 122 sq ft 2ND FLOOR: 107 sq ft  
TOTAL: 229 sq ft

SIZES AND DIMENSIONS ARE APPROXIMATE. ACTUAL MAY VARY.

Matterport



## First Bedroom



## En Suite



## Second Bedroom



## Third Bedroom



## En Suite







Fourth Bedroom



Fifth Bedroom



Sixth Bedroom



Bathroom



Annexe

Floor Plan



1ST FLOOR





## Kitchen And Lounge



## Bedroom

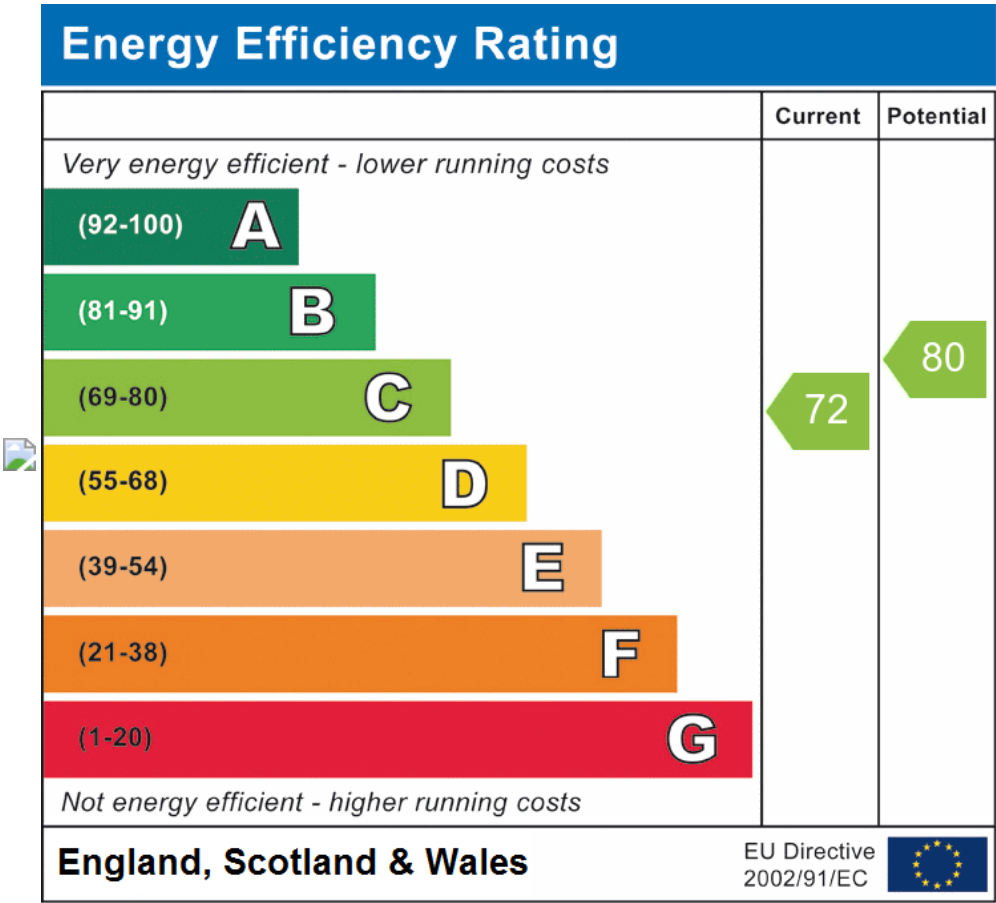


## En Suite





## Energy Performance Certificate



All measurements provided are approximate and should be verified before exchange of contracts. No appliances have been tested and should be checked to ensure they are in good working order.