

184a Chislehurst Road, Petts Wood, Orpington, Kent, BR5 1NR

Property Images





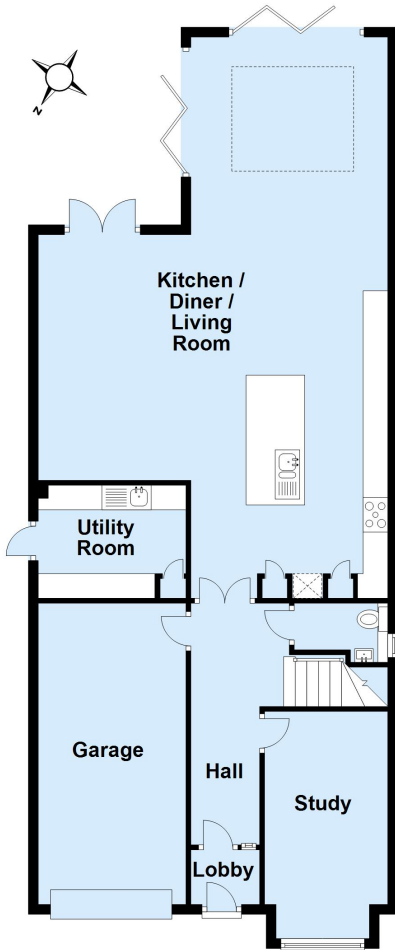






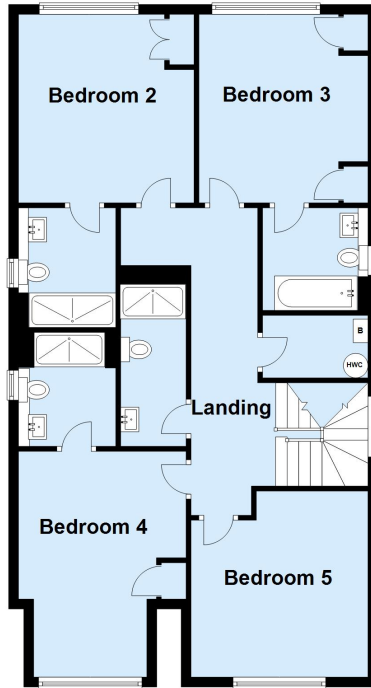
Ground Floor

Approx. 114.1 sq. metres (1227.7 sq. feet)



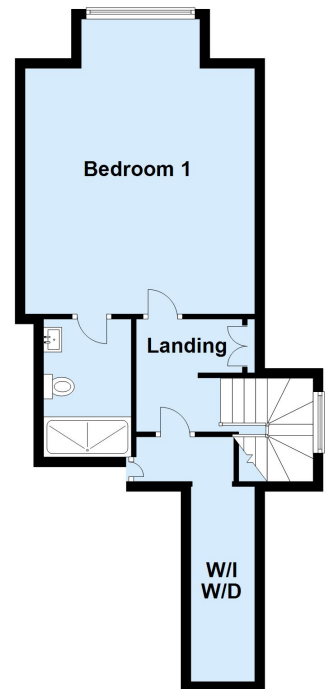
First Floor

Approx. 93.8 sq. metres (1009.3 sq. feet)



Second Floor

Approx. 47.2 sq. metres (508.1 sq. feet)



Total area: approx. 255.0 sq. metres (2745.1 sq. feet)