

29 Danes Court

Dover
CT16 2QF

£450,000 FREEHOLD

Draft Details...FOR SALE THOROUGH BURNAP + ABEL...Offers Over £450,000 | Set within a highly sought-after and peaceful location, this impressive four-bedroom detached home combines generous living space with countryside charm, all while remaining just a short drive from Dover town centre and its wide range of shops, bars, and amenities. The property welcomes you into a spacious entrance hallway, immediately setting the tone for the space and warmth found throughout. At the heart of the home is a large open-plan lounge and dining area, designed with family living and entertaining in mind. Bathed in natural light from expansive windows, this inviting space enjoys beautiful, uninterrupted views across rolling hills and open fields. The well-proportioned kitchen provides ample cupboard and worktop space, complemented by a separate utility room offering additional practicality and potential to be adapted to suit individual needs, including the option to create a shower room. A downstairs cloakroom/WC adds further convenience to the ground floor. The accommodation offers four generously sized bedrooms arranged over two floors, providing flexible living options for families of all sizes. A standout feature of the home is the first-floor roof terrace, an ideal spot to relax and enjoy the surrounding views. Outside, the wrap-around garden creates a private and versatile space for family life, entertaining, or quiet enjoyment. Practical benefits include a private driveway providing ample off-road parking for multiple vehicles, along with a garage offering additional storage or future potential. With its rare blend of space, setting, and views, this exceptional home truly stands out. For your chance to view call Burnap + Abel on 01304 279107.



W.C.

Lounge/Dining Room

26' 0" x 23' 1" (7.92m x 7.04m)

Kitchen

13' 10" x 11' 10" (4.22m x 3.61m)

Utility

9' 1" x 8' 7" (2.77m x 2.62m)

Bedroom Four/Reception Room

11' 10" x 11' 10" (3.61m x 3.61m)

Bedroom One

13' 9" x 11' 10" (4.19m x 3.61m)

Roof Terrace

Bedroom Two

14' 11" x 11' 11" (4.55m x 3.63m)

Bedroom Three

10' 9" x 10' 1" (3.28m x 3.07m)

Shower Room

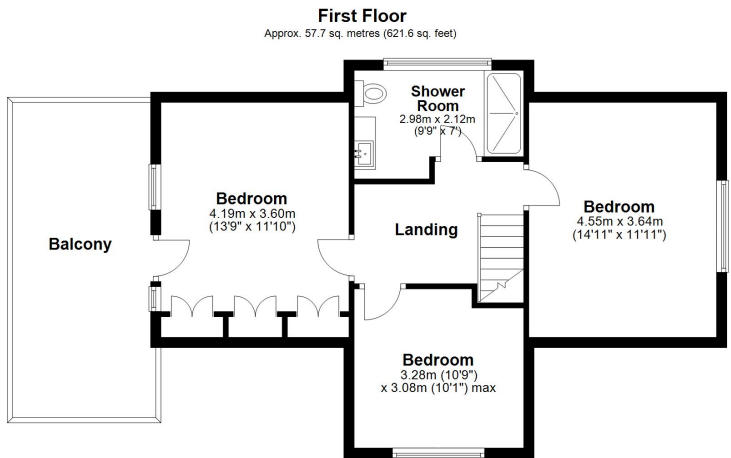
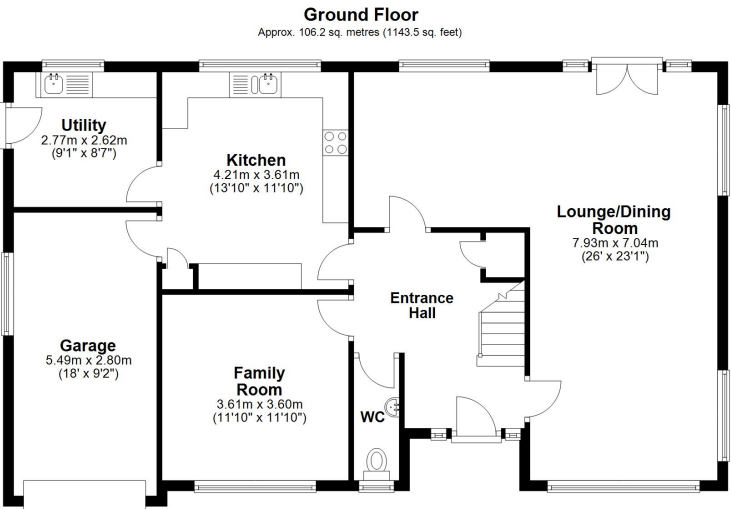
9' 9" x 7' 0" (2.97m x 2.13m)

Garden

Garage & Driveway

Area Information

Located within the exclusive and highly sought after Danes Court, with outstanding views, The Danes Recreational Grounds, Connaught Park and Dover Castle, are only a few minutes' walk away and the property is also within close proximity of many of the local schools such as: both the Girls' and Boys' Dover Grammar Schools, Dover College, The Duke of York's Royal Military School and St. Edmund's Roman Catholic School, to name a few.



Total area: approx. 164.0 sq. metres (1765.0 sq. feet)

