



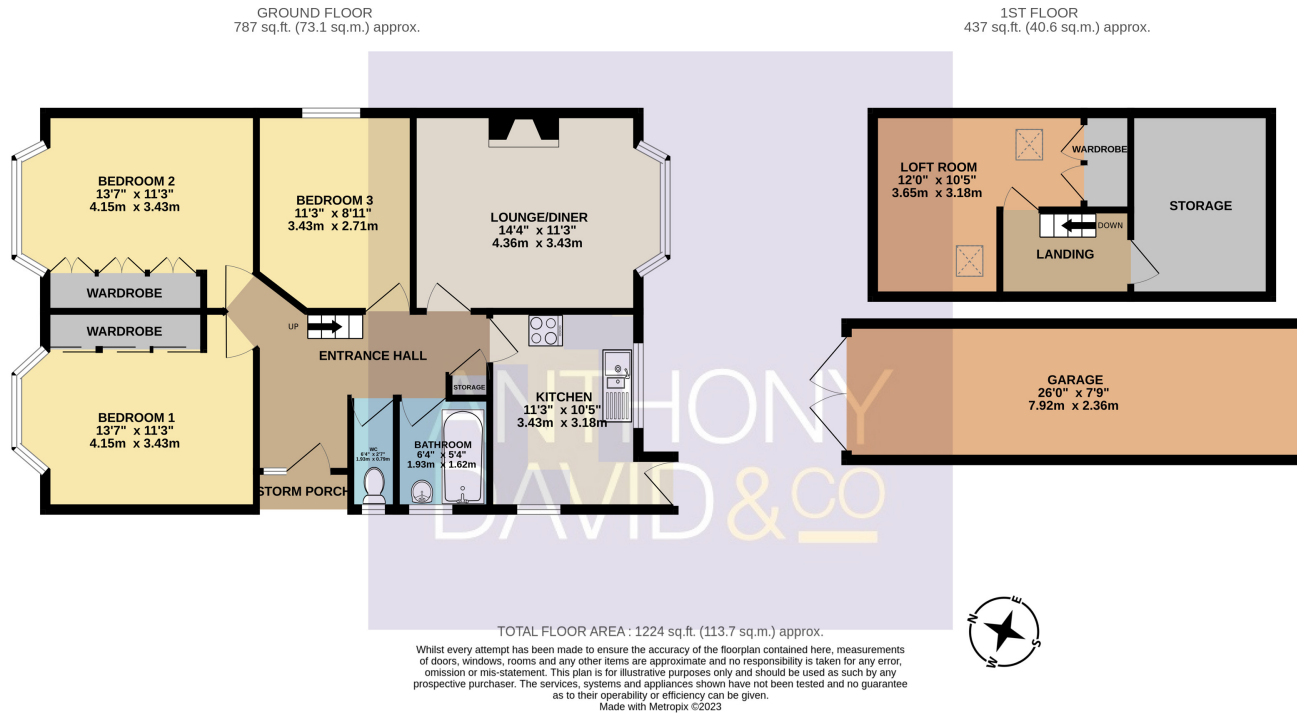
80 Pound Lane, Oakdale, Poole, Dorset BH15 3RR

Guide Price £375,000 Freehold

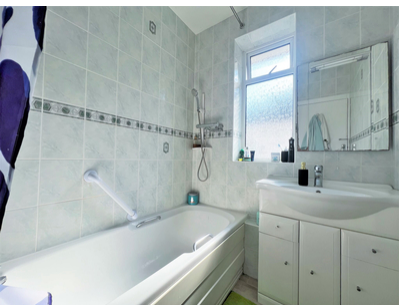
A three double bedroom detached bungalow conveniently positioned in the heart of Oakdale, within walking distance to local shops, schools and amenities. This spacious family home would benefit from some cosmetic updating, and internal viewing is highly recommended to appreciate the versatile accommodation on offer, which comprises: lounge/diner, kitchen, three double bedrooms, an additional loft room and storage room, bathroom and separate WC. Externally, this property presents a southerly aspect, enclosed rear garden which is mostly laid to lawn with a sun patio as well. To the front, there is driveway parking which in turns leads to the detached 26' garage. Further features of this superb property include: feature fireplace to the lounge, built in wardrobes to bedroom one and two, built in storage cupboard to loft room, gas central heating and UPVC double glazing. Nearby Schools - Stanley Green Infants, St Marys Catholic Primary, Longfleet Primary, Ocean Academy, Oakdale Junior School, St Edwards RC/CoE and Poole High School.

info@anthonydavid.co.uk  
www.anthonydavid.co.uk  
01202 677444

**ANTHONY  
DAVID & CO**



- Entrance Hall 9' 0" x 13' 2" (2.74m x 4.01m) Leading to
- Lounge/Diner 14' 4" x 11' 3" (4.37m x 3.43m)
- Kitchen 11' 3" x 10' 5" (3.43m x 3.17m)
- Bedroom One 13' 7" x 11' 3" (4.14m x 3.43m)
- Bedroom Two 13' 7" x 11' 3" (4.14m x 3.43m)
- Bedroom 3 11' 3" x 8' 11" (3.43m x 2.72m)
- Bathroom 6' 4" x 5' 4" (1.93m x 1.63m)
- WC 6' 4" x 2' 7" (1.93m x 0.79m)
- Loft Room 12' 0" x 10' 5" (3.66m x 3.17m) Max
- Garage 26' 0" x 7' 9" (7.92m x 2.36m)
- Garden Enclosed
- Parking Off Road Driveway
- Council Tax Band C



Property Misdescriptions Act 1991  
 Property details contained herein do not form part of an offer or contract. Any measurements are included for guidance only and as such must not be used for the purchase of carpets or fitted furniture. We have not tested any apparatus, equipment, fixtures, fittings or services neither have we confirmed or verified the legal title of the property. All prospective purchasers must satisfy themselves as to the correctness and accuracy of such details provided by us. We accept no liability for any existing or future defects relating to any property.