



bond
Residential

Runsell View, Danbury, CM3 4PE

Council Tax Band E (Chelmsford City Council)



Guide Price £650,000 - £675,000 Freehold

GUIDE PRICE £650,000 - £675,000

Thoughtfully extended to the rear by the present owners this four bedroom detached bungalow now offers a stunning and spacious open plan family living space which utilises full height glazing to ensure the room is flooded with natural light and maximises the stunning views down the garden to the farmland beyond the rear boundary.

ACCOMMODATION

Entering the bungalow via a side entrance door you enter an I-shaped entrance hall which provides access to four bedrooms, bathroom and study/home office. All four bedrooms feature fitted storage solutions and the principal bedroom benefits from an en-suite shower in addition to the main family bathroom which serves the remaining bedrooms. The hall opens seamlessly into the recent extension which provides a stunning open plan living/dining/kitchen space perfect for modern day family living complete with underfloor heating and three openings which include central bi-fold doors and link the inside seamlessly with the outside. The kitchen area extends into a useful utility room and is fitted with modern grey handleless units with quartz worktops. Integrated appliances include an induction hob, twin electric ovens, dishwasher and boiling water tap.

The home also features gas central heating and double glazing.

Outside the front of the property provides off road parking and an integral store. The rear garden enjoys an easterly aspect and features a patio area to the rear of the bungalow with a 2nd patio located at the end of the garden which is bathed in sunlight at the end of the day. The owners have also constructed a fantastic garden room which can be utilised for a multitude of uses.

LOCATION

Located in cul de sac position the property is conveniently situated for easy access into the Village Centre. Danbury offers a range of local facilities which include the popular schools of Elm Green and Heathcote as well as St.Johns C of E and Danbury Park Primary Schools. Amenities within the village of Danbury include a local co-op supermarket, public houses and a parish church. For the commuter, Chelmsford's mainline station lies approximately 5 miles to the west of the village with Chelmsford city centre offering a more extensive range of shopping and leisure activities. Maldon town centre and South Woodham Ferrers are also within easy reach of the village.

- Well presented detached bungalow with contemporary rear extension
- Principal bedroom with en-suite shower room
- Fitted kitchen with integrated appliances and separate utility room
- Gas central heating & double glazing
- 50ft east facing rear garden backing onto farmland
- Four bedrooms all with fitted storage solutions
- Stunning open plan family living space & study
- Family bathroom/wc
- Internal store and off road parking
- Modern garden room with adjacent store

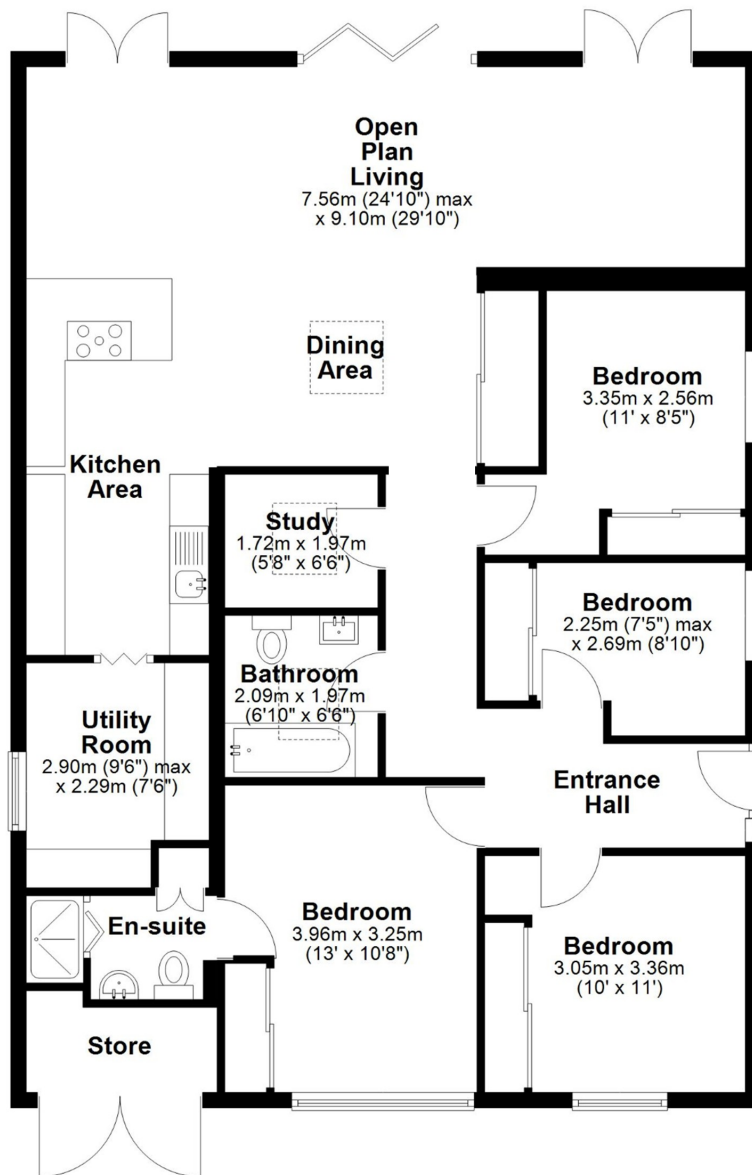




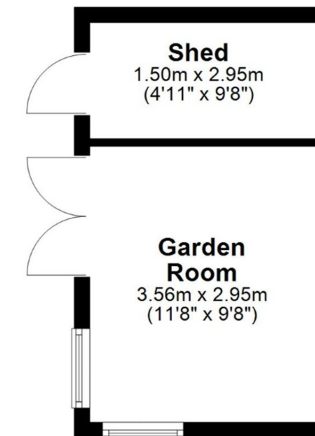




Ground Floor



Outbuilding



APPROX INTERNAL FLOOR AREA 129 SQ M (1390 SQ FT)

OUTBUILDING 15 SQ M (160 SQ FT)

This floorplan is for illustrative purposes only and is **NOT TO SCALE**

All measurements are approximate

NOT to be used for valuation purposes.

Copyright Bond Residential 2025

10, Maldon Road,
Danbury, Essex, CM3 4QQ

Telephone: 01245 222856

Website: www.bondresidential.co.uk

Consumer Protection from Unfair Trading Regulations 2008 and the Business Protection from Misleading Marketing Regulations 2008. Bond Residential have made every effort to ensure that consumers and/or businesses are treated fairly and provided with accurate material information as required by law. We have not tested any apparatus, equipment, fixture, fitting or any services and as such are unable to verify they are in working order, fit for their purpose, or within the ownership of the seller or landlord. Neither have we been able to check the legal documentation to verify the legal status of the property. We therefore advise potential buyers or tenants to verify these matters with their own solicitors or other advisers.

