



**GREGORY BROWN**  
RESIDENTIAL SALES & LETTINGS

£675,000 Freehold  
**FOR SALE**



## **Grosvenor Road, Staines- upon-Thames, Surrey, TW18 2RN**

SPACIOUS FOUR BEDROOM SEMI-DETACHED PROPERTY SITUATED ALONG THIS MUCH SOUGHT AFTER NO-THROUGH ROAD IDEALLY POSITIONED FOR EASY ACCESS TO STAINES TOWN CENTRE, MAINLINE TRAIN STATION, LOCAL SHOPS & SCHOOLS. Offering spacious flexible accommodation the property benefits from a spacious lounge/diner, fitted kitchen/breakfast room with separate utility, downstairs W.C, four well-proportioned bedrooms (en-suite to Bed 1), further family bathroom, large secluded rear garden, off-street parking and integral garage. No Onward Chain. Viewings Highly Recommended!

**Gregory Brown**

127a, High Street, Staines-upon-Thames, TW18 4PD

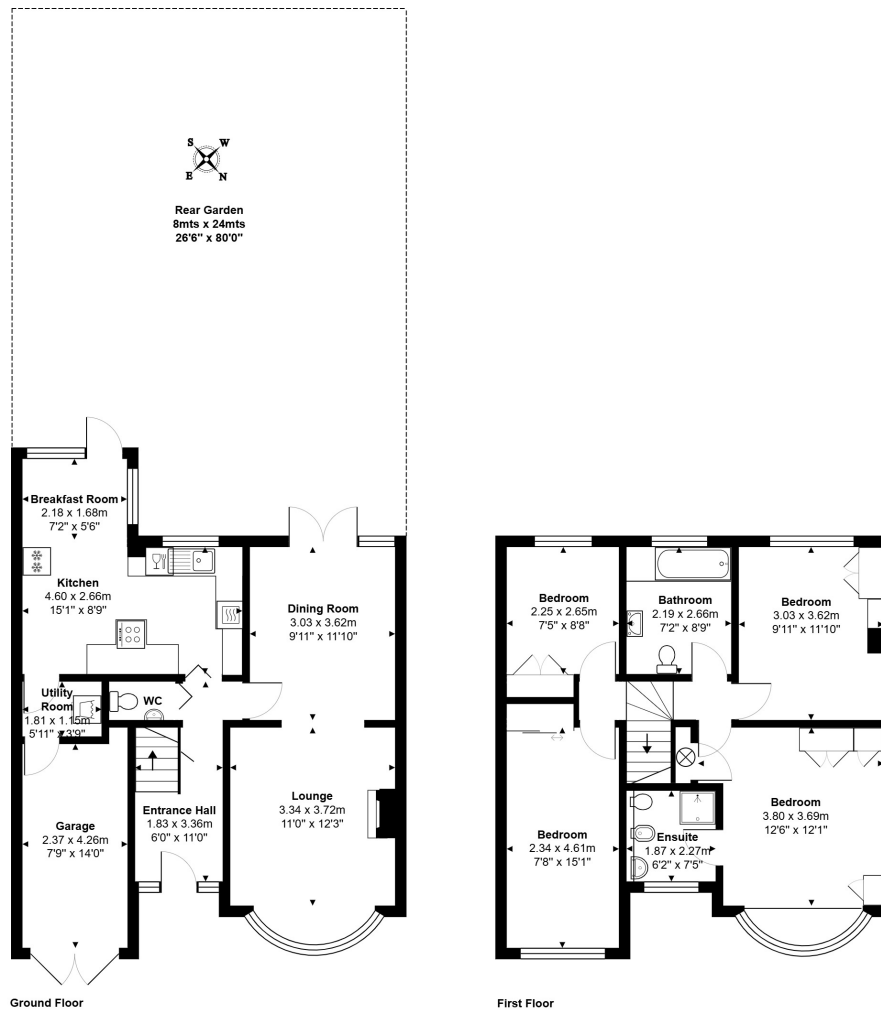
01784 451458

[staines@gregory-brown.co.uk](mailto:staines@gregory-brown.co.uk)

ROOM DESCRIPTIONS

\_\_\_\_\_

# FLOORPLAN



Total Area: 126.4 m<sup>2</sup> ... 1360 ft<sup>2</sup>

All measurements are approximate and for display purposes only.

127a, High Street, Staines-upon-Thames, TW18 4PD

01784 451458

staines@gregory-brown.co.uk