

**3 Bedroom(s), Semi-Detached House, Freehold**

**Lonsdale Avenue, Intake, Doncaster.**



- 3D Virtual Tour Available
- Lounge
- Outhouse with Two Storage Rooms and W/C
- Spacious Rear Enclosed Garden
- Three Bedroom Semi Detached Family Home

- Garage and Driveway
- Dining Room
- Kitchen
- Family Bathroom
- Local Amenities, Schools and Transport Links

**£160,000**  
**For Sale**

*Book your viewing today* Tel: 01302 247754



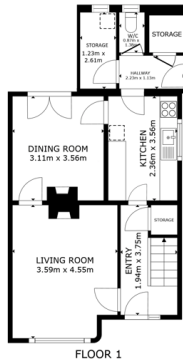
## Owner's View

This is a 3 bedroom semi-detached house with a shared drive leading to a sizeable detached brick garage. The kitchen was refitted in 2019 and the gas boiler renewed in December 2017 (serviced in Dec 2024). The bathroom is configured as a wet room. There is a spacious rear garden and there is an open aspect to the front of the house.

There is an outbuilding attached to the rear which includes a toilet.

## Ground Floor

### Floor Plan



GROSS INTERNAL AREA  
FLOOR 1: 36.1 sqm FLOOR 2: 45.0 sqm  
ENCLOSURE: 81.1 sqm TOTAL: 81.1 sqm  
SIZES AND DIMENSIONS ARE APPROXIMATE, ACTUAL MAY VARY.

Matterport



## Lounge



## Entry



## Kitchen





## Dining Room



## Floor Plan



FLOOR 2

GROSS INTERNAL AREA  
FLOOR 1: 24.5 sqm FLOOR 2: 42.0 sqm  
EXCLUDED AREA: 10.0 sqm  
TOTAL: 56.5 sqm

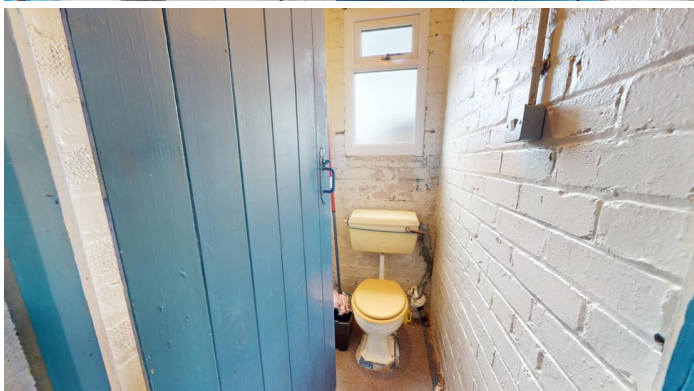
SIZES AND DIMENSIONS ARE APPROXIMATE, ACTUAL MAY VARY

Matterport

## Master Bedroom



## Outhouse with W/C



## Bedroom



## First Floor





**Bedroom**



**Family Bathroom**



**Externals**

**Front Aspect**



**Rear Garden**



**Property Information**

Council Tax Band - A

Utilities - Mains Gas, Mains Electricity, Mains Water

Water Meter -

Tenure -

Solar Panels -

Space Heating System -

Approximate Heating System Installation Date -

Water Heating System -



Approximate Water Heating Installation Date -

Boiler Location -

Approximate Electrical System Installation Date -

Permanent Loft Ladder -

Loft Insulation -

Loft Boarded out –

Whilst every effort is made to ensure that the information contained in these particulars is reliable, they do not constitute or form part of an offer or any contract. The Property Hive accept no liability for the accuracy of the contents, and therefore they should be independently verified by prospective buyers or tenants before agreeing an offer. All measurements provided are approximate and should be verified before exchange of contracts. No appliances, fixtures or fittings have been tested and should be checked by the buyer before exchange of contracts to ensure they are in good working order.



## Energy Performance Certificate

