



**PLOT 8 2 Oakmere Grove, Fenton Close, Potters Bar,
Hertfordshire, EN6 5EE**

£750,000

- **NEW BUILD**
- **THREE BEDROOMS**
- **STUDY**
- **OPEN PLAN KITCHEN**
- **OFF STREET PARKING**
- **THREE STOREY LUXURY TOWN HOUSES**
- **EN SUITE SHOWER ROOM TO MASTER BEDROOM**
- **EXCLUSIVE GATED RESIDENTIAL DEVELOPMENT**
- **BI-FOLDING DOORS**

108, High Street, Potters Bar, EN6 5AT

01707 245 555

www.home-counties.com

PLOT 8 2 Oakmere Grove, Fenton Close, Potters Bar, Hertfordshire, . EN6 5EE

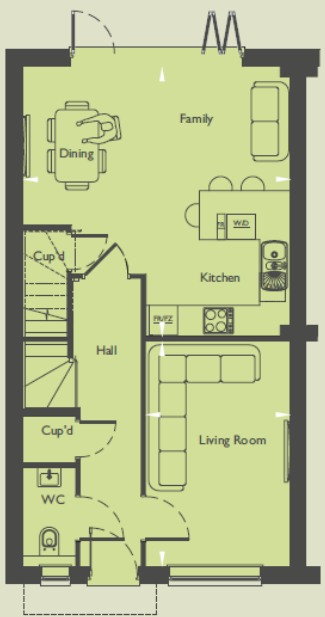
£750,000 Freehold

OAKMERE GROVE : An exclusive gated residential development of just 10 Luxury Family Homes. This THREE BEDROOM THREE STOREY SEMI-DETACHED LUXURY TOWNHOUSE with open plan kitchen, dining, family room with bi-folding doors out onto a private garden, individual study and off street parking.

PLOTS 6 - 9 ROOM LAYOUTS

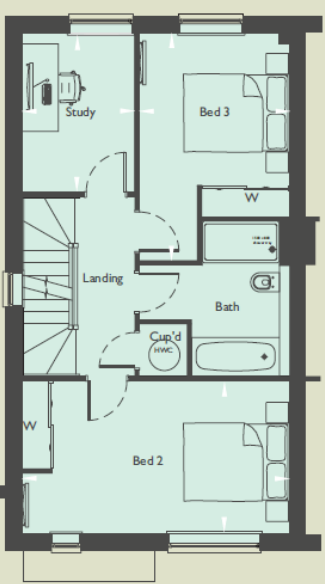
Floor plans are for illustration purposes only and may be subject to change. Furnishings not included.

Plots 7 and 9 are shown, Plots 6 and 8 are handed.



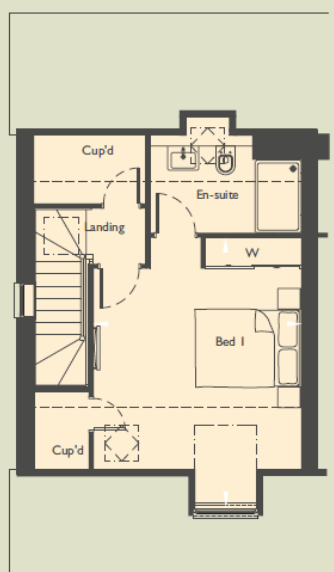
Ground Floor Plan

	m	ft
Living Room	4.36 x 2.81	14'4" x 9'2"
Kitchen/Dining/Family	5.23 x 5.18	17'2" x 17'0"



First Floor Plan

	m	ft
Bedroom 2	5.18 x 2.95	17'0" x 9'8"
Bedroom 3	4.40 x 2.91	14'5" x 9'7"
Study	3.06 x 2.18	10'1" x 7'2"



Second Floor Plan

	m	ft
Bedroom 1	5.19 x 4.03	17'0" x 13'3"

--- Dotted line denotes extent of full height ceiling

133.05 sqm / 1432.14 sqft gross internal floor area.

