



Cathedral Green House, Wells, Somerset, BA5 2UB

£1,200,000 Freehold

COOPER  
AND  
TANNER







# Cathedral Green House Wells, Somerset, BA5 2UB

 4  3  4 EPC Not required  
£1,200,000 Freehold

## DESCRIPTION

A rare opportunity to acquire a substantial residence on the world renowned Cathedral Green, in the heart of the historic city of Wells. The property is believed to date back to the 17th century with more recent additions and remodelling in both the 18th and 20th centuries. This stunning house boasts an array of period features and elegantly proportioned rooms and is offered to the market with NO ONWARD CHAIN.

The house is Grade II\* Listed with circa. 3679sqft of accommodation, arranged over three floors along with a useful cellar. Upon entering is an attractive porch with double doors leading into the spacious hallway. This impressive space has a black and white marble chequered floor, high ceilings, built-in bookcases and ornate panelling (believed to come from a bank in Bristol). Doric columns frame a lovely seating area alongside French doors with attractive stained glass fanlight above and leading out to a brick paved inner courtyard. Leading off the hall is a cloakroom with WC and wash basin, a large store cupboard, understairs cupboard and access to the cellar. To the front of the house panelled double doors open to the elegant drawing room with Georgian paned sash window to the front with original shutters, panelled walls, deep coving and an attractive fireplace with tiled insert and inset gas fire. Across the hall is the dining room with exposed floorboards, exposed beam, panelling, curved display alcove and a painted wood fireplace with marble surround. The open fire makes a wonderful focal point. There is ample space for a dining table to seat ten to twelve guests and to the front, overlooking the private courtyard, is a sash window with original shutters. To the rear of the house, in the older part of the building is the kitchen breakfast room. This room has a more informal feel and features a herringbone tiled floor, exposed beam, a range of cabinets with Shaker style doors and drawers, Neff eye level double oven, six burner gas hob and kitchen island with further storage and inset one and a half bowl sink. Within the kitchen is space for an American style fridge freezer and a bay window, overlooking the inner courtyard and offering the perfect spot for a breakfast table to seat six. The kitchen steps lead down

to a lobby with built-in safe and to the utility room. The utility room, believed to have been built over a medieval road originally running behind the Market Place, has a terrazzo floor, Belfast sink, space and plumbing for both a washing machine and tumble dryer along with a roof light, floor mounted boiler and plenty of storage space. From the hall a door opens to a flight of stone steps leading down to the cellar with stone floor and storage space. The room is an ambient temperature and would make an ideal wine cellar.

From the hall, a wide staircase, with alternate barley twist and chamfered spindles, wends its way to the first floor landing with built-in cupboards, a glazed door to the terrace along with access to three bedrooms and three bathrooms. The principal bedroom with exquisite ornate plaster work ceiling has a Georgian paned sash window with shutters and a window seat overlooking the Cathedral Green. This elegantly proportioned room has deep coving, a dado rail and plenty of space for bedroom furniture. A cased opening, with steps, leads up to the marvellous ensuite bathroom. This generous space features a double ended freestanding slipper bath, two traditional style wash basins, WC, large walk-in shower enclosure with waterfall head, built-in dressing table and a sash window, with shutters and window seat, once again offering wonderful views over the Cathedral Green. The second bedroom is a good sized double with ensuite bathroom, boxed ceiling, concealed lighting and a bay window overlooking the first floor terrace. The ensuite comprises a bath with shower attachment, WC, vanity basin, large mirror and attractive mosaic tiles. To the rear, in the older part of the house is the third bedroom. This 'L' shaped room is a generous single with dado rail, exposed beam, coving and a dual aspect with a bay window and side window overlooking the terrace. Within the bay is a built-in desk or dressing table. From the bedroom a door leads to a staircase with dark oak panelling (the staircase is blocked off at second floor level) and a useful storage room. Adjacent to the bedroom is a beautifully appointed family bathroom with exposed beam, low level panelling, bath with shower attachment, WC, corner vanity and window overlooking the terrace.

















The staircase continues to the second floor galleried landing with stunning stretched octagonal roof lantern, bathing the space in natural light. The fourth bedroom is a bright and spacious double with vaulted ceiling, painted beams, built-in cupboards (housing the water tank at the higher level) and a stone mullioned window looking out to the terrace below. A medieval painted door leads to a small galleried landing, looking over the dark oak panelled staircase below and leading to the ensuite shower room. The wood panelled ensuite features a large inset mirror, WC, wash basin, shelves, loft hatch and a corner shower enclosure with waterfall head. From the landing two steps lead up to a wider landing area with built-in bookcases with glazed doors, next to the family room. This notably spacious room was converted in the 20th century and features three dormer windows to the front with glazed side cheeks offering wonderful views of the spectacular West Front of Wells Cathedral, along with views over the Cathedral Green to other historic buildings, including The Old Deanery, Browne's Gate and Wells Museum with the scenic Mendip Hills in the background. This bright and informal room benefits from French windows leading out to a balcony at the rear, two shelved alcoves, fireplace with exposed beam and inset gas fire and inset lighting. The room gives the option of two separate seating areas, if desired.

#### OUTSIDE

The Cathedral Green provides direct access to the property with an elegant, scrolled, wrought iron arch with lantern and a wrought iron gate leading to a secluded sunken courtyard garden with a raised bed featuring an array of mature shrubs, hedging and flowers, along with a lovely aspect of the West elevation of the Cathedral. This paved area offers plenty of space for outdoor furniture and entertaining. On the ground floor, leading off the hall is a brick paved, internal courtyard with Doric columns. On the first

floor accessed from the landing is a spacious terrace, with wrought iron fence and view over the internal courtyard below. This private terrace is the ideal spot for outdoor furniture and entertaining. PLEASE NOTE: The vendor uses the whole of this terrace, as no other properties currently have direct access to it. However, the rear part of the terrace, beyond the wrought iron fence, does not fall within the boundary of the property and is not included in the sale.

Accessed from the family room on the second floor is a balcony with space for seating and overlooking the terrace below.

Regarding parking, the current owner rents a parking space within 200m of the property and we are advised that it may be possible to continue this arrangement.

Agents Note - The gardens in front of the properties on The Green are not within the curtilage of the houses but have been used privately for many years in agreement with Wells Cathedral.

#### LOCATION

The picturesque City of Wells offers a range of local amenities and shopping facilities with four supermarkets (including Waitrose), as well as twice-weekly markets, cinema, leisure centre, a choice of pubs and restaurants, dentists and doctors, several churches and both primary and secondary state schools.

There are also many highly-regarded independent schools (Prep & Senior) within easy reach, such as All Hallows Prep School, Downside School, Wells Cathedral School and Millfield School. For those travelling by train, Castle Cary station (which has direct services to London Paddington) is situated only twelve miles away. Both the City of Bristol and the Georgian City of Bath, a World Heritage Site, are located just 20 miles away and are easily accessible.

REF:WEUJAT25042025

#### Local Information Wells

**Local Council:** Somerset Council

**Council Tax Band:** G

**Heating:** Gas central heating

**Services:** Mains drainage, water, gas & electricity

**Tenure:** Freehold



#### Motorway Links

- M4
- M5



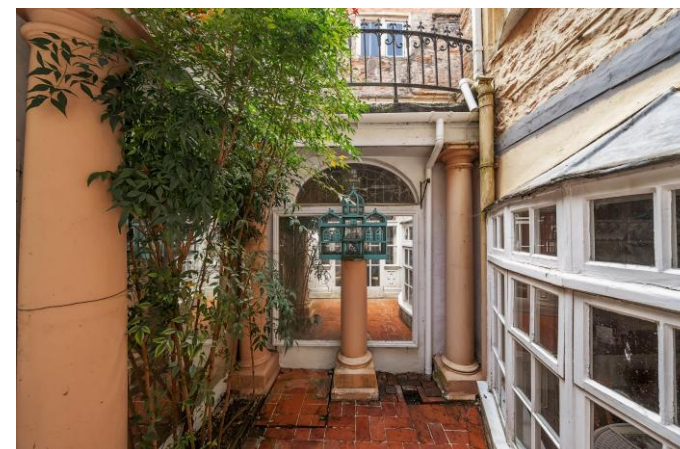
#### Train Links

- Castle Cary
- Bath Spa
- Bristol Temple Meads



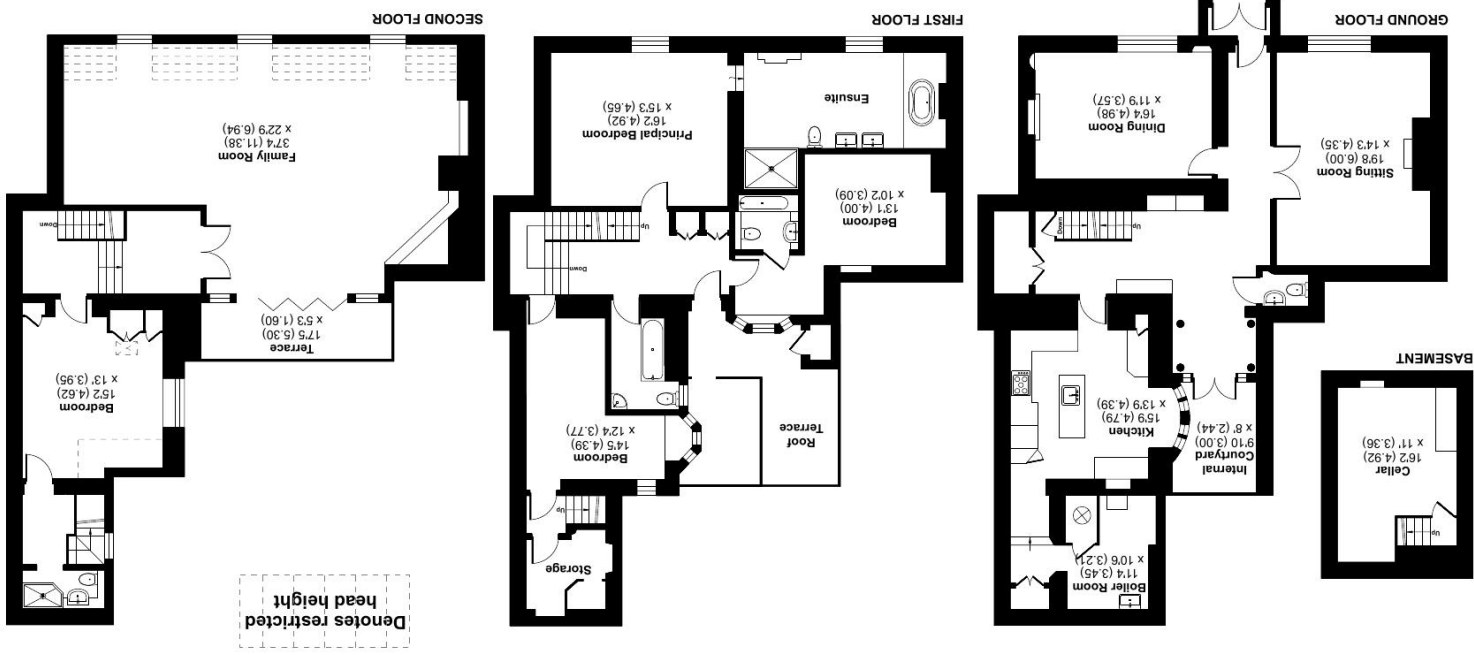
#### Nearest Schools

- Wells – See details above



# Cathedral Green, Wells, BA5

Approximate Area = 3679 sq ft / 341.7 sq m  
Limited Use Area(s) = 109 sq ft / 10.1 sq m  
Total = 3788 sq ft / 351.8 sq m  
For identification only - Not to scale



Floor plan produced in accordance with RICS Property Measurement 2nd Edition, incorporating International Property Measurement Standards (IPMS2 Residential). © nrichcom 2025. Produced for Cooper and Tanner. REF: 1265618

**WELLS OFFICE**  
telephone 01749 676524  
19 Broad Street, Wells, Somerset BA5 2DJ  
[wells@cooperandtanner.co.uk](mailto:wells@cooperandtanner.co.uk)

**COOPER  
AND  
TANNER**



**Important Notice:** These particulars are set out as a general outline only for the guidance of intended purchasers and do not constitute, nor constitute part of, an offer or contract. All descriptions, dimensions, reference to condition and necessary permissions for use and occupation, warranties and other details are given without responsibility and any intending purchasers should not rely on them as statements or representations of fact but must satisfy themselves by inspection or otherwise as to the correctness of each of them.