



Hanger Lane, London, W5 3DA

Cow & Co
LONDON



GUIDE PRICE OF £575,000-700,000. A fantastic sized three bedroom apartment situated in the ever popular Haymills Estate. The property has the benefit of a share of the freehold, double garage, lovely communal gardens, two bathrooms along with bright and spacious accommodation throughout.

Collingwood Court is a well managed purpose built development, centrally located between North Ealing (Piccadilly line) and Hanger Lane (Central line) stations. Ealing Broadway is also within close proximity, (offering the District Line, Overground and Elizabeth Line Services), plus excellent local amenities in addition to the shops, restaurants, bus connections, supermarkets, recreational parks, and bars & pubs of Acton Central, Hanger Lane and Shepherds Bush.

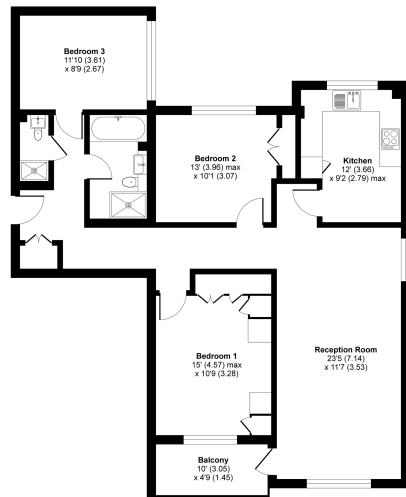


- Three large double bedrooms
- Two bathrooms
- Very large and spacious reception room
- West facing balcony
- Gated development
- Communal gardens
- Residents parking
- Private double garage
- No onward chain



Hanger Lane, London, W5

Approximate Area = 1041 sq ft / 97 sq m
For identification only - Not to scale

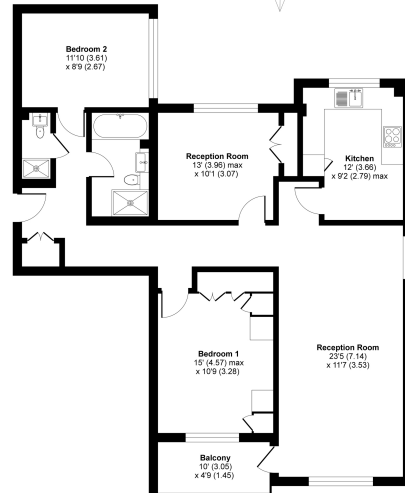


FIRST FLOOR



Hanger Lane, London, W5

Approximate Area = 1041 sq ft / 97 sq m
For identification only - Not to scale

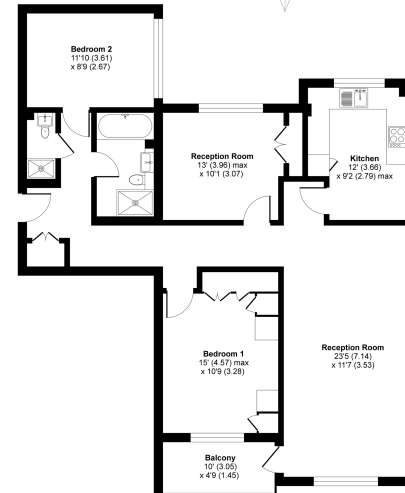


EIGHTH FLOOR



Hanger Lane, London, W5

Approximate Area = 1041 sq ft / 97 sq m
For identification only - Not to scale



FIRST FLOOR

 Certified Property Measurer
Floor plan produced in accordance with RICS Property Measurement Standards incorporating International Property Measurement Standards (IPMS Residential). © ncb.com 2021. Produced for Cow & Co Properties Ltd. REF: 178623

 Certified Property Measurer
Floor plan produced in accordance with RICS Property Measurement Standards incorporating International Property Measurement Standards (IPMS Residential). © ncb.com 2021. Produced for Cow & Co Properties Ltd. REF: 178623

 Certified Property Measurer
Floor plan produced in accordance with RICS Property Measurement Standards incorporating International Property Measurement Standards (IPMS Residential). © ncb.com 2021. Produced for Cow & Co Properties Ltd. REF: 178623

Tel: 0208 065 0010
Email: thehub@cowandco-london.com
Web: cowandco-london.com

Agents note: All measurements are approximate and whilst every attempt has been made to ensure accuracy they are for general guidance only and must not be relied on. The fixture and fittings referred to have not been tested and therefore no guarantee can be given that they are in working order. Internal photographs are reproduced for general information and it must not be inferred that any item shown is included with the property.

Cow & Co

LONDON