



Paynes Park

Paynes Park | Hitchin | Hertfordshire | SG5 1EJ

www.stonegate-estates.co.uk



PAYNES PARK

Property Description

Two double bedroom retirement apartment set on the first floor of the popular Whittings Court development overlooking the communal gardens.

This first floor property offers a generous lounge/diner, fitted kitchen and a bathroom with walk in shower. Two good sized bedrooms, one with fitted wardrobes.

Council Tax band C. EPC rating B. Please note this is a retirement property and you must be over the age of 60 to qualify for residency.

Whittings Court is well placed for access to the town centre (via the Arcade) where there is a variety of shops, including the nearby Waitrose store plus restaurants and bars within the town's attractive and historic centre. The apartment is set to the rear of the block and features the 24 hour Careline facility, a house manager and communal facilities that include the resident's lounge, laundry room and communal garden.

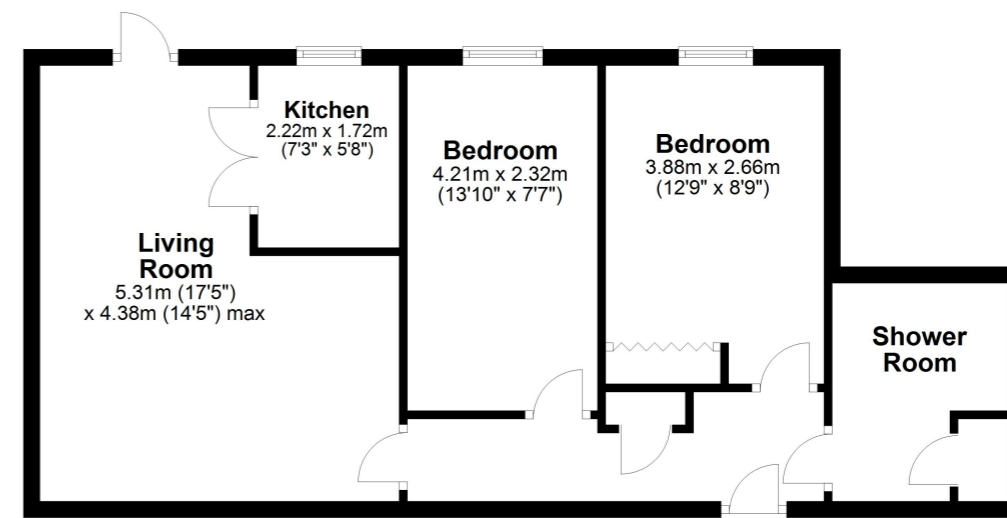
£250,000 Leasehold





Floor Plan

Approx. 56.9 sq. metres (612.1 sq. feet)



Total area: approx. 56.9 sq. metres (612.1 sq. feet)

All measurements shown are approximate and for guidance only. Garages and workshops are not included in any gross floor areas unless integral to the main building where they will be included. Plan produced using PlanUp.



- Retirement Apartment
- First floor
- Two Double Bedrooms
- Shower Room
- 24 Hour Careline
- Residents Lounge
- Laundry Facilities
- House Manager

EPC Rating:

Stonegate Estate Agents

01462 438979

sales@stonegate-estates.co.uk | www.stonegate-estates.co.uk

