

FOR SALE

£370,000

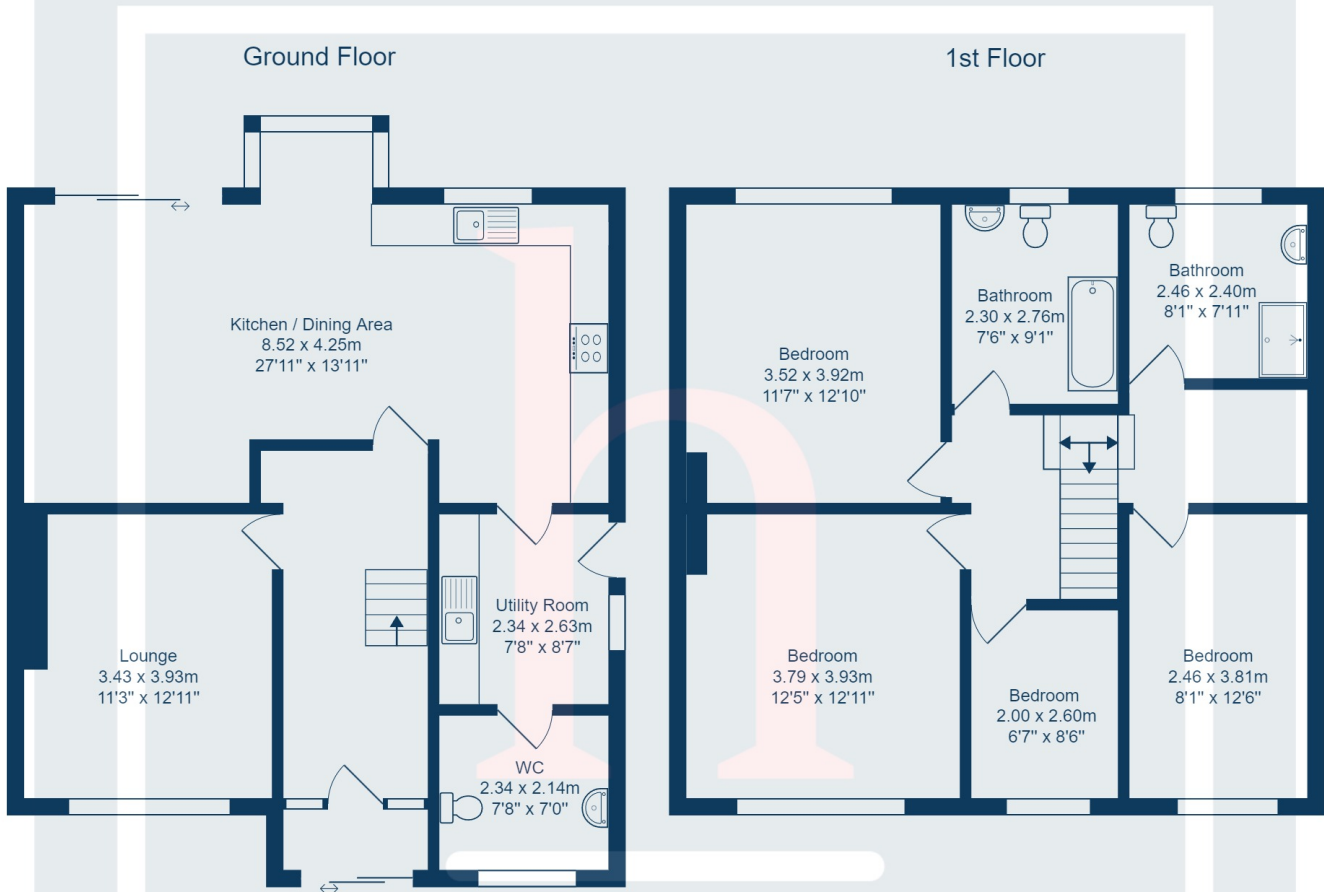
Meadway, Upton, Wirral. CH49 6JQ



Fantastic Family Home - Fully Refurbished Throughout!! Offered with the added benefit of no onward chain is this beautifully presented and extended semi detached home situated in a popular sought after road in a prime part of Upton. With ample off road parking and a generous private rear garden this property would make a wonderful option for the young growing family. The property has been finished to an excellent standard with works including rewiring, replumbing with new central heating, plastering throughout, high quality brand new kitchen, new bathrooms, feature media wall and flooring/decoration. We anticipate huge interest in this newest rare opportunity to purchase a spacious 'move in and drop your bags' home and recommend an early viewing so as not to miss out.







Total Area: 143.3 m<sup>2</sup> ... 1542 ft<sup>2</sup>  
 All measurements are approximate and for display purposes only.