

# 17 Bridge Street,

Frome, BA11 1BB



£450,000 Freehold

A truly charming and substantial, four-bedroom, mid terrace property, positioned within the heart of Frome town centre.

# 17 Bridge Street, Frome, BA11 1BB

 4  2  2 EPC D

---

**£450,000 Freehold**

## DESCRIPTION

This fantastic, four-bedroom, mid terraced property is located in the centre of the ever-popular market town of Frome, just a short stroll away from amenities.

You enter the home and are welcomed into a semi-open plan space, incorporating two generous reception rooms, one with a charming wood burner with brick surround, and the other with a feature fireplace. Both of these rooms boast exposed wooden floorboards and offer enough space to be furnished/utilised in a variety of different ways, dependent on the new owners' preferences.

Beyond the main reception rooms is a small hallway, which gives access to the kitchen, downstairs w.c. and courtyard garden. There are stairs here that ascend to the first floor.

On the first floor, a landing leads you to two double bedrooms and the family bathroom. Both bedrooms on this floor offer built-in storage space and the smaller of these two rooms enjoys a lovely feature fireplace.

The family bathroom comprises a white four-piece suite including bath with shower attachment, wash hand basin, w.c. and a separate shower.

A further landing on the second floor gives access to another two

bedrooms - one being the Master bedroom. There is another bathroom on this floor.

The master bedroom is a wonderful size, with a charming fireplace and plenty of room for furnishings. This room benefits from being dual aspect, flooding the room with natural light.

## OUTSIDE

To the rear of the home is a private, and fully enclosed, courtyard garden which is accessed through the home. This is a lovely space to enjoy alfresco dining, or as a private sanctuary to enjoy during the warmer summer months.

## ADDITIONAL INFORMATION

Mains gas central heating.

All mains services are connected.

## LOCATION

Frome is a historic market town with many notable buildings and features the highest number of listed buildings in Somerset. Frome offers a range of shopping facilities, a sports centre, several cafés, a choice of pubs, local junior, middle and senior schools, several theatres, and a cinema. Bath and Bristol are within commuting distance, and the local railway station connects at Westbury for London Paddington.









## Bridge Street, Frome, BA11

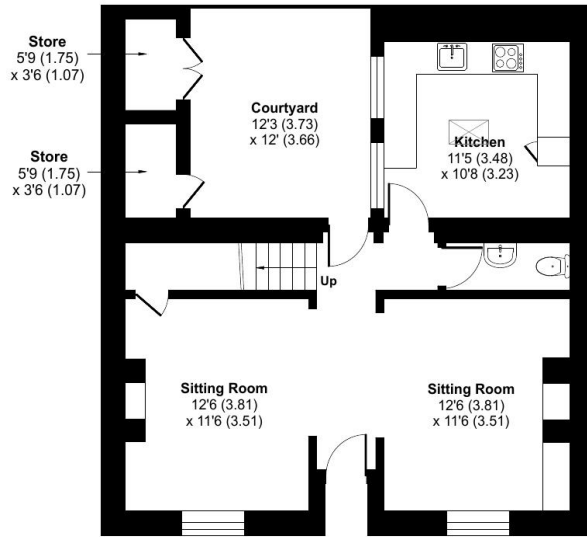
Approximate Area = 1465 sq ft / 136.1 sq m

Stores = 35 sq ft / 3.2 sq m

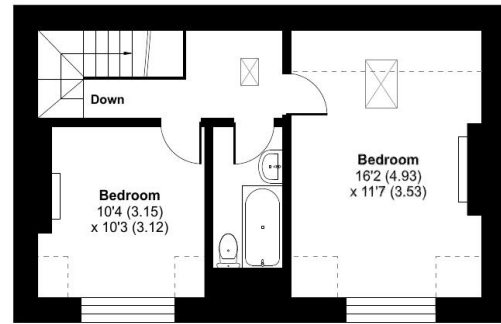
Total = 1500 sq ft / 139.3 sq m

For identification only - Not to scale

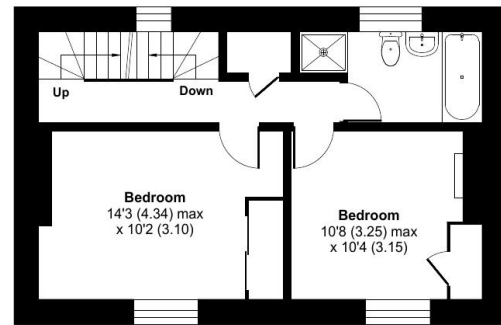
Denotes restricted  
head height



GROUND FLOOR



SECOND FLOOR



FIRST FLOOR



Certified  
Property  
Measurer

Floor plan produced in accordance with RICS Property Measurement Standards incorporating International Property Measurement Standards (IPMS2 Residential). © nitchcom 2024.  
Produced for Cooper and Tanner. REF: 1196249



### FROME OFFICE

Telephone 01373 455060

6 The Bridge, Frome, Somerset, BA11 1AR

[frome@cooperandtanner.co.uk](mailto:frome@cooperandtanner.co.uk)

**COOPER  
AND  
TANNER**

Important Notice: These particulars are set out as a general outline only for the guidance of intended purchasers and do not constitute, nor constitute part of, an offer or contract. All descriptions, dimensions, reference to condition and necessary permissions for use and occupation, warranties and other details are given without responsibility and any intending purchasers should not rely on them as statements or representations of fact but must satisfy themselves by inspection or otherwise as to the correctness of each of them.



**RICS**



**OnTheMarket**