



HIGHVIEW GARDENS

EN6 5PJ





Freehold

£550,000

Accommodation

A delightful three double bedroom end of terrace modern family home ideally located within walking distance to Potters Bar High Street, locals shops and amenities and with a stones throw from Oakmere Park.

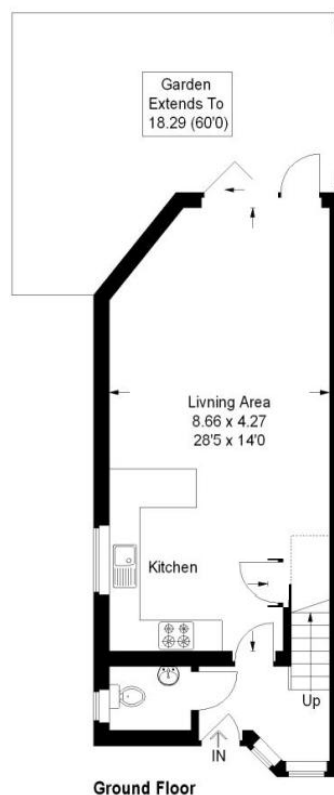
This home was built in 2016 and benefits from a spacious open plan kitchen / dining / living room with bi-folding doors over looking the garden, and a downstairs WC. The first floor consists of modern bathroom and two double bedrooms, and the second floor a double bedroom with views over the garden.

Viewing advised.

70A HIGHVIEW GARDENS, POTTERS BAR, HERTFORDSHIRE. EN6 5PJ



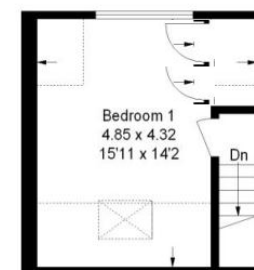
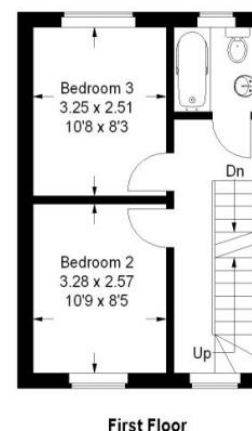
70A HIGHVIEW GARDENS, POTTERS BAR, HERTFORDSHIRE. EN6 5PJ



Approximate Gross Internal Area
Ground Floor = 43.9 sq m / 472 sq ft
First Floor = 29.0 sq m / 312 sq ft
Second Floor = 20.9 sq m / 225 sq ft
Total = 93.8 sq m / 1009 sq ft



Reduced headroom below 1.5 m / 5'0



IMPORTANT: we would like to inform prospective purchasers that these sales particulars have been prepared as a general guide only. A detailed survey has not been carried out, nor the services, appliances and fittings tested. Room sizes should not be relied upon for furnishing purposes and are approximate. If floor plans are included, they are for guidance only and may not be to scale. If there are any important matters likely to affect your decision to buy, please contact us before viewing the property.