



# EVERETT HOMES

Sales | Lettings | Land



Flat 3, 20 Avonwood, Owls Road, Bournemouth, Dorset BH5 1FB

£1,450

pcm

01202 143611

[www.everetthomes.co.uk](http://www.everetthomes.co.uk)

[sales@everetthomes.co.uk](mailto:sales@everetthomes.co.uk)



Points of Interest

- Two Double Bedroom Apartment
  - Large Landscaped Garden
  - Luxury Bespoke Fitted Kitchen
  - Short Walk To Beaches
  - Large Living Room With Access to Patio
- Off Road Allocated Parking
  - Double Glazing & Gas Central Heating
  - Modern Finish Throughout
  - Viewing Highly Recommended
  - En-Suite To Bedroom One

The Property

Everett Homes are delighted to offer to let this well presented two double bedroom ground floor apartment in this popular location moments from the beach!

The property comprises of a spacious Living/Dining/Kitchen with integrated appliances, two double bedrooms (Bedroom one with En-Suite) a principal Bathroom and a large private enclosed Rear Garden.

The property benefits from being in this extremely sought after location and benefits from allocated off road parking.

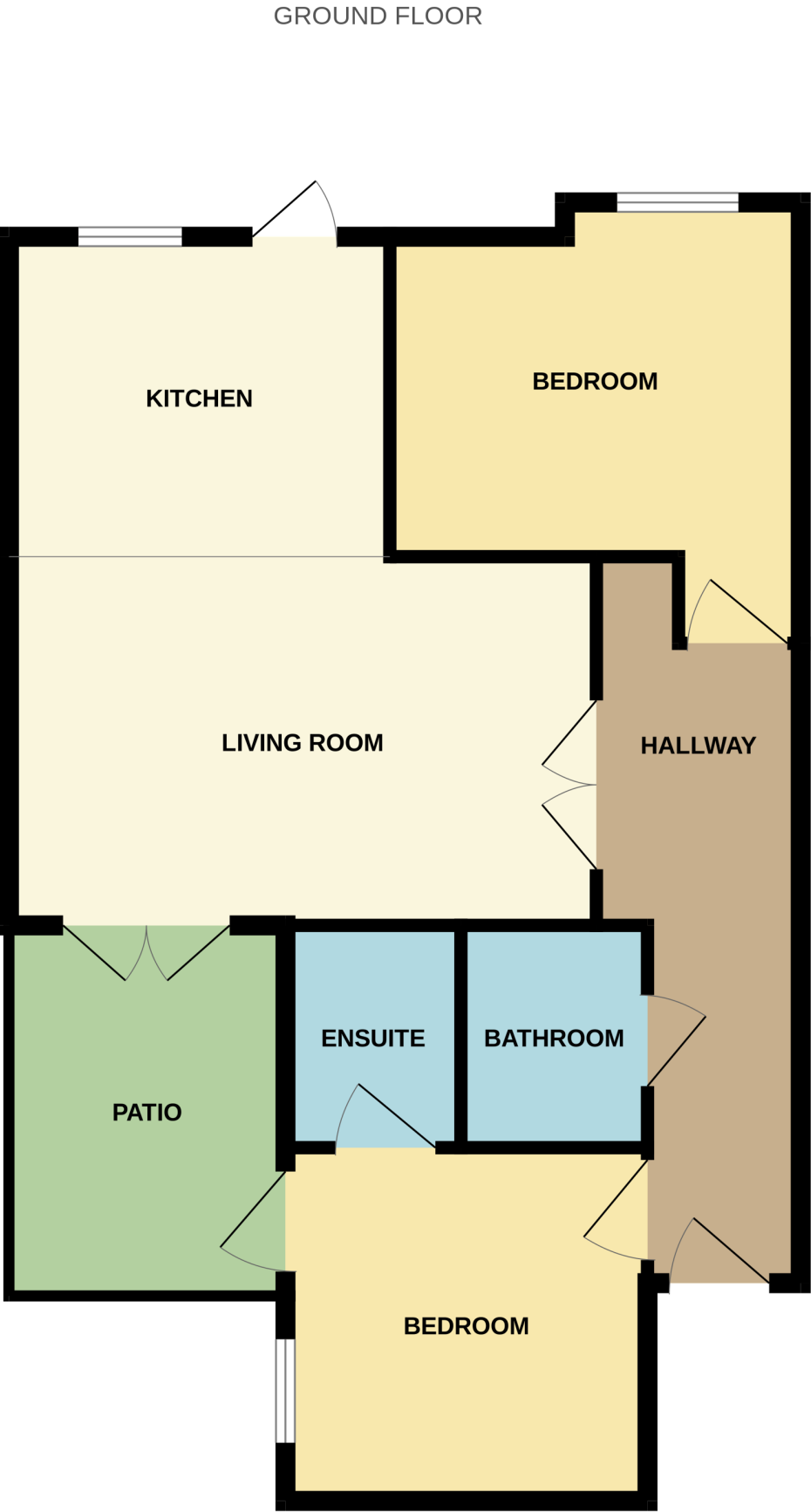
EPC RATING- C (79)

Holding Deposit is equivalent of one Week's rent. This payment will be deducted from the first months rental payment

Deposit - Equivalent of five weeks rent

Everett Homes are a member of the Client Money Protect Scheme and are also a members of The Property Ombudsman Redress Scheme.

Location



Whilst every attempt has been made to ensure the accuracy of the floorplan contained here, measurements of doors, windows, rooms and any other items are approximate and no responsibility is taken for any error, omission or mis-statement. This plan is for illustrative purposes only and should be used as such by any prospective purchaser. The services, systems and appliances shown have not been tested and no guarantee as to their operability or efficiency can be given.  
Made with Metropix ©2025