



Asking Price £625,000 Freehold



Little Heath Road, Bexleyheath, Kent DA7 5HL



PROPERTY DESCRIPTION

RE/MAX SELECT are delighted to offer for sale this extended 1930s semi-detached house, close to schools, amenities, and transport links including Bexleyheath station.

This immaculate property comprises 4 DOUBLE bedrooms, living room, dining/family room, good-sized fitted kitchen, utility room, upstairs family bathroom, ground floor shower room, and second floor cloakroom. Further benefits include off street parking, 45ft (approx) rear garden, garage, double glazing, and gas central heating.

Total Internal Area approx: 1,535.79 sq ft (142.68 sq m)





ROOM DESCRIPTIONS

Ground Floor

Porch

Wood-effect, double glazed; door leading to entrance hallway.

Entrance Hallway

14' 8" x 6' 6" (4.48m x 1.97m) Laminate flooring, understairs storage, radiator; coat cupboard with radiator; carpeted stairs leading to first floor.

Living Room

13' 8" x 11' 9" (4.17m x 3.59m) Wood flooring, radiator; marble fireplace and surround with gas fire; double glazed bay window to front.

Dining Room

12' 2" x 10' 9" (3.72m x 3.27m) Wood flooring, radiator; double doors to sun room.

Sun Room

10' 6" x 8' (3.20m x 2.45m) Wood flooring, radiator; door leading to kitchen; double glazed french doors leading to rear garden.

Kitchen

12' 3" x 9' 9" (3.74m x 2.98m) Wood-effect flooring; range of white wall and base units with granite-effect worktops; white ceramic sink with mixer tap and filtered water tap; electric double oven; gas hob with extractor hood over; space and connections for fridge/freezer; integrated dishwasher, tiled walls, radiator, double glazed windows.

Utility Room

8' 9" x 7' 5" (2.66m x 2.26m) Lino flooring; range of wall and base units; stainless steel sink, water softener; space and connections for washing machine; space and connections for tumble dryer; door to rear lobby with large storage cupboard, and door to garden.

Downstairs Shower Room

9' 9" x 2' 10" (2.97m x 0.87m) Tiled flooring, tiled walls; walk-in shower cubicle; wall-hung wash-hand basin; radiator; double glazed frosted window to side.

First Floor

Landing

Carpeted; large storage cupboard housing boiler; double glazed window to side; carpeted stairs to second floor.

Bedroom

11' 5" x 11' 3" (3.49m x 3.42m) Carpeted, radiator, built-in wardrobes; double glazed bay windows to front.

Bedroom

12' 2" x 10' 10" (3.71m x 3.29m) Carpeted, radiator, built-in wardrobes; double glazed windows to rear.

Bedroom

10' 10" x 7' 11" (3.29m x 2.41m) Carpeted, built-in wardrobes, radiator; double glazed bay window to front.

Family Bathroom

8' 10" x 7' 6" (2.69m x 2.28m) Tiled flooring, tiled walls; panelled bath with shower-mixer; wash-hand basin, w/c, large airing cupboard, heated towel-rail, radiator; double glazed frosted window to rear.

Second Floor

Bedroom

17' 1" x 12' (5.20m x 3.65m) Carpeted, radiator, eaves storage, Velux window, double glazed windows; door leading to cloakroom.

Cloakroom

Laminate flooring; vanity unit with wash-hand basin; w/c.

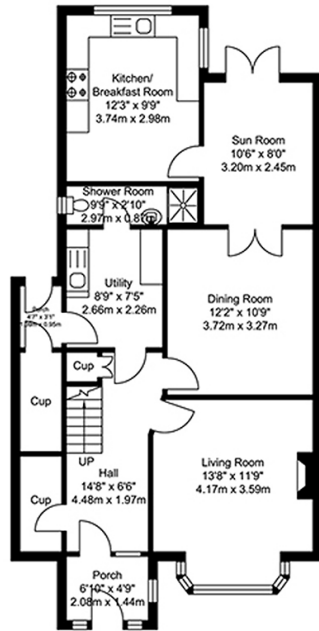
External

Front Driveway

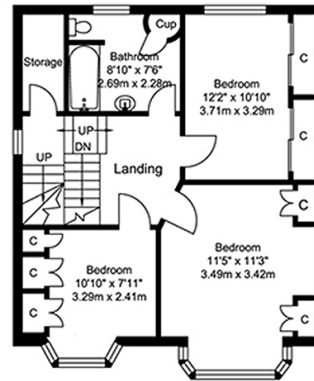
Off street parking; mature shrubs, bushes and trees.

Rear Garden

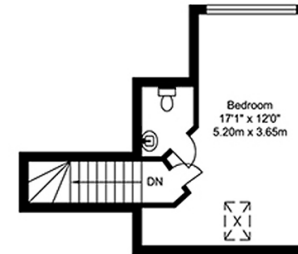
FLOORPLAN



Ground Floor
Approximate Floor Area
789.96 SQ.FT.
(73.39 SQ.M.)



First Floor
Approximate Floor Area
538.08 SQ.FT.
(49.99 SQ.M.)



Second Floor
Approximate Floor Area
207.74 SQ.FT.
(19.30 SQ.M.)

TOTAL APPROX FLOOR AREA 1535.79 SQ.FT. (142.68 SQ. M.)
For Identification Purposes Only.

