



diamond
PROPERTIES



18 Crown Street Buildings, 2 Crown Street, Leeds, West Yorkshire. LS2 7DA.

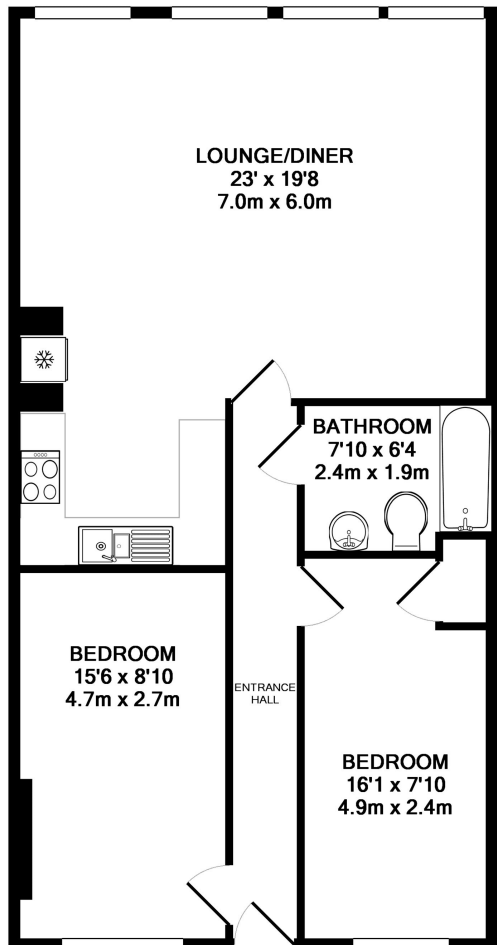
£890 Not Applicable

- 890 PCM
- Available now
- 2 double bedrooms
- Large open plan lounge/dining room
- First floor apartment
- Lift and video security entrance
- Amazing city centre location

18 Crown Street Buildings, 2 Crown Street, Leeds, West Yorkshire. LS2 7DA.

£890 Not Applicable

Diamond Properties are pleased to offer this fully furnished city centre flat. The furnished property boasts 2 large double bedrooms, an open plan lounge/dining room, fully fitted kitchen and house bathroom. The open plan lounge/dining room has a large leather sofa, 4 person dining table. The kitchen has a washer/dryer, dishwasher, electric oven & hob, fridge/freezer and a microwave. The property is located next to the Corn Exchange, and within walking distance of a vast array of bars, restaurants and a range of shops.



TOTAL APPROX. FLOOR AREA 748 SQ.FT. (69.5 SQ.M.)

Whilst every attempt has been made to ensure the accuracy of the floor plan contained here, measurements of doors, windows, rooms and any other items are approximate and no responsibility is taken for any error, omission, or mis-statement. This plan is for illustrative purposes only and should be used as such by any prospective purchaser. The services, systems and appliances shown have not been tested and no guarantee as to their operability or efficiency can be given

Made with Metropix ©2018

