



56 Tarbert Avenue, Wishaw, North Lanarkshire, ML2 0JH

Light & Well Presented, Two Bedroom, Semi-Detached Home with Gardens, Driveway & Garage

Up to date price and viewing info at [mov8realestate.com/property](https://www.mov8realestate.com/property)

espc rightmove  Zoopla
find your happy

Property Description

Light and well presented, two-bedroom, semi-detached family home with private gardens, a driveway and a detached garage. Set in the family-orientated residential town of Wishaw, North Lanarkshire, approximately 18 miles west of Glasgow city centre.

Comprises an entrance hall, living/dining room, kitchen, two double bedrooms, and a shower room.

Features include a fitted kitchen with appliances, a stylish shower room suite, light tasteful decor throughout, and contemporary flooring and lighting. In addition, there is gas central heating, double glazing, and good storage provision with built-in storage cupboards.

Externally, there is an enclosed south-facing rear garden with a lawn and wooden deck; whilst to the front, there is a further garden with a lawn, as well as a driveway and a detached garage.

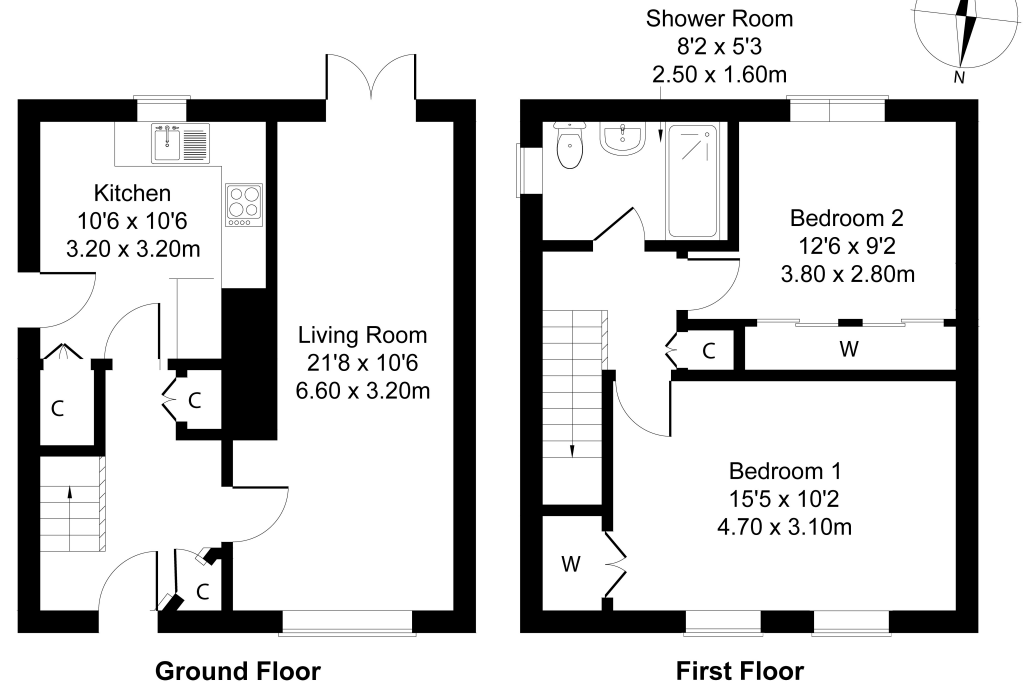
A welcoming entrance hall affords access to the stairs leading to the upper hall, the rear-set kitchen and the dual-aspect living room which features wood effect flooring continuing from the hall, a central light fitting, a dining area to the rear and French patio doors accessing the south-facing garden. Also with garden access, the kitchen is fitted with wall and base units, stone effect worktops, a sink with drainer and a tiled surround; with appliances including an integrated oven and a gas hob with an extractor hood, and ample space for freestanding appliances.

On the upper floor, bedroom one is set to the front with carpeted flooring and two windows allowing plentiful natural light; whilst bedroom two overlooks the rear garden, and also features carpeted flooring and a built-in wardrobe. Completing the accommodation, the stylish shower room is fitted with a modern suite including a large shower cubicle with a rainfall showerhead, tiled flooring and splash walls, spotlighting and a ladder-style radiator.



56 Tarbet Avenue, Wishaw, ML2 0JH

Approximate Gross Internal Area: (797 sq ft - 74 sq m.)



Legal Disclaimer : Floor-plan and measurements are for illustrative guidance only, and not intended to form part of any contract.

Area Description

Located on the edge of the Clyde Valley, Wishaw is a large town in North Lanarkshire, 15 miles southeast of Glasgow city Centre. With local public transportation available to Motherwell, Hamilton and Glasgow, as well as being within easy access to the M74 and the M8, the town is a popular location for commuters travelling to both Glasgow and Edinburgh. With a large Lidl and Morrisons superstore, the area offers the usual expected

everyday amenities, as well as its own hospital within close proximity. Furthermore, Wishaw provides a number of high-street stores, coffee shops, restaurants and pubs; as well as a sports centre and its own golf course. Whilst further afield the Clyde Walkway and Strathclyde and Chatelherault country parks offer open green spaces and outdoor recreation, and schooling at all levels is also well provided for.





Our Services

- Free pre-sale property valuations
- Great value fixed estate agency fees
- Extensive buyer matching database
- Purchase and sale conveyancing

Contact Us

0345 646 0208

sales@mov8realestate.com

www.mov8.com

Head Office

6 Redheughs Rigg, Edinburgh, EH12 9DQ

Glasgow Office

77 Renfrew Street, Glasgow, G2 3BZ



Estate Agents and Solicitors

