



NEWSON & BUCK
ESTATE AGENTS



1 Grovelands, Ingoldisthorpe, King's Lynn, Norfolk PE31 6PG £239,950

A very well looked after two bedroom semi-detached bungalow situated in the Village of Ingoldisthorpe. The extended accommodation comprises hall, w/c, lounge diner, kitchen, shower room, two bedrooms and a garden room. The property has electric warm air heating and benefits from double glazing, garage and off road parking.

Ingoldisthorpe is a pretty Village situated within close proximity to the North Norfolk Coast and Sandringham Estate. The Village has many amenities in nearby Villages, including Snettisham and Hunstanton.

Entrance Hall

Double glazed door to front and fitted carpet.

W/c

Double glazed window to side, low flush w/c, wash hand basin and vinyl flooring.

Lounge Diner

20' 6" x 12' 7" (6.25m x 3.84m) Double glazed window to front, feature fire place and fitted carpet.

Kitchen

11' 11" x 7' 3" (3.63m x 2.21m) Double glazed door and window to side, fitted kitchen with stainless steel sink, space for cooker, washing machine and fridge freezer, and vinyl flooring.

Inner Hall

Cupboard housing warm air heating and loft hatch.

Shower Room

6' 4" x 5' 1" (1.93m x 1.55m) Double glazed window to side, shower enclosure, w/c, wash hand basin, electric towel radiator and vinyl flooring.

Bedroom One

13' 2" x 9' 8" (4.01m x 2.95m) Double glazed window to rear and fitted carpet.

Bedroom Two

8' 11" x 10' 4" (2.72m x 3.15m) Double glazed window to side and fitted carpet.

Garden Room

10' 1" x 10' 0" (3.07m x 3.05m) Double glazed sliding doors to rear, electric radiator and fitted carpet.

Garage

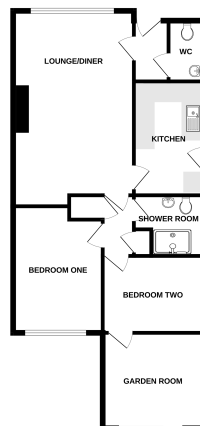
Up and over door to front, glazed window to rear and personal door to side.

Garden

To the front of the property is a driveway creating parking for numerous vehicles leading to the garage. The front



GROUND FLOOR
757 sq. ft. (70.4 sq. m.) approx.



TOTAL FLOOR AREA: 1107 sq. ft. (102.4 sq. m.) approx.
We are not responsible for any errors or omissions in this information. The information is provided for general information only and should not be relied upon for any specific purpose. The information is provided as a guide only and should not be used as a basis for any decision. The information is provided as a guide only and should not be used as a basis for any decision. The information is provided as a guide only and should not be used as a basis for any decision.