



Ralph Swinger Place, Letchworth Garden City, Hertfordshire. SG6





2 Bedroom Ground Floor Flat £550,000 Leasehold

An outstanding two bedroom, ground floor apartment, with use of a swimming pool, situated in an exclusive development for the over 55's, within the Conservation Area. Ralph Swingler Place, is for those wanting to move from a larger family house to a more manageable home or for those looking for a 'lock up & leave' retirement property that enables them to spend time away.

- Over 55's development
- Access to swimming pool
- High specification
- Close to amenities
- Walking distance from town centre and mainline station
- Sun room
- Leasehold
- Two double bedrooms
- Council tax band E
- EPC rating B

Ralph Swingler Place:

An charming two bedroom, ground floor apartment, with use of a swimming pool, situated in an exclusive development for the over 55's, within the Conservation Area. Ralph Swingler Place, is for those wanting to move from a larger family house to a more manageable home or for those looking for a 'lock up & leave' retirement property that enables them to spend time away. The apartment comprises of; two generously sized double bedrooms with the master having its own en-suite, a dining room, lounge with large bay window, family bathroom, study, sun room and an approximately 22ft kitchen. Constructed in 2006, by Beechcroft Developments Ltd, to an excellent specification, this outstanding ground floor apartment provides spacious accommodation in a highly convenient and sought

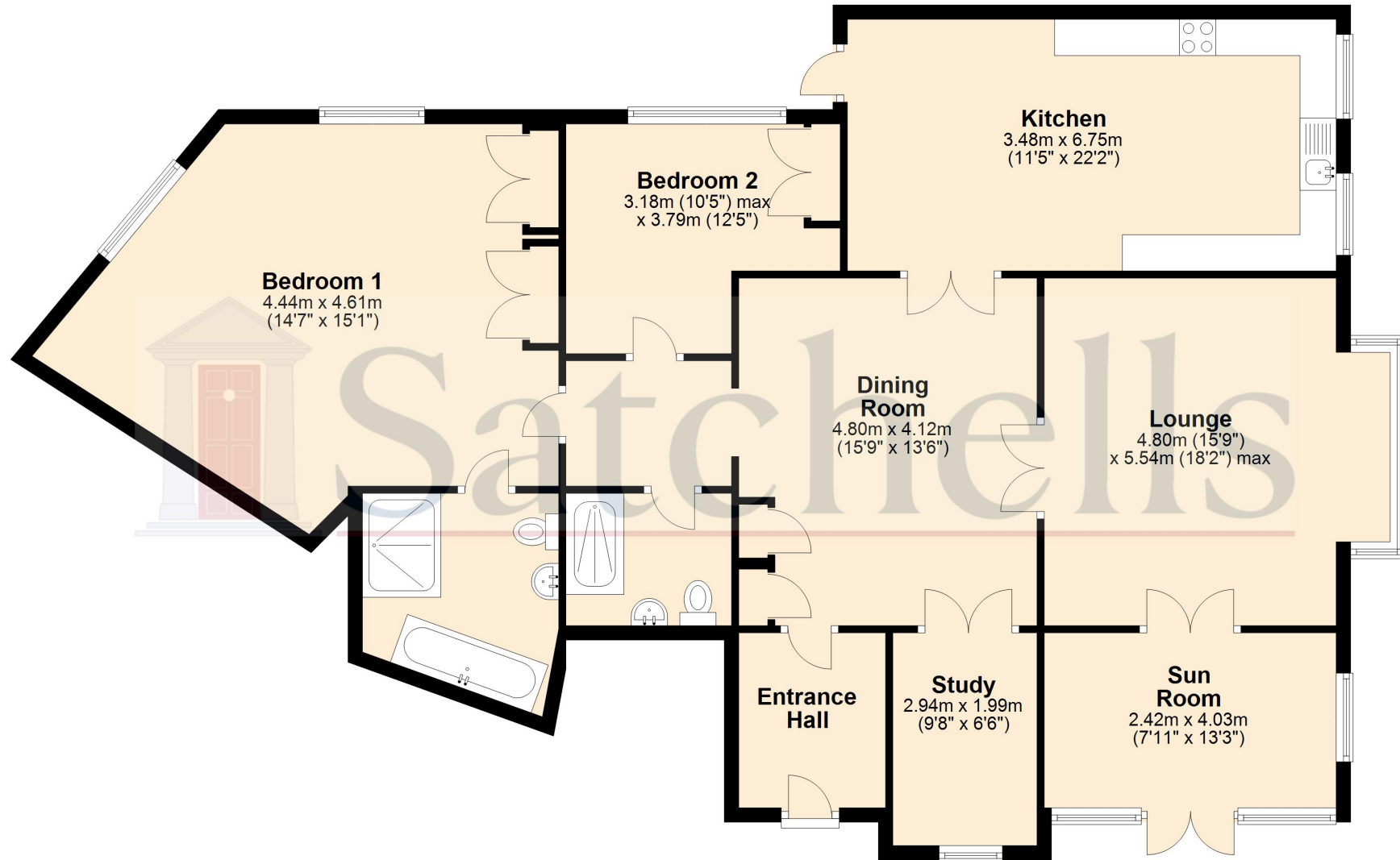
after location, within easy reach of the mainline station and town centre. Letchworth, the World's first 'Garden City', offers a variety of High Street stores, independent shops, restaurants and public houses together with a wide range of attractions including a museum, art galleries, a cinema, leisure facilities, parks and gardens, and there is also a doctor's surgery close by. The stylish and well presented accommodation has double glazing and a energy efficient central heating system.



These particulars are a guide only and do not constitute an offer or a contract. The floor plan is for identification purposes only and not to scale. All measurements are approximate and should not be relied upon if ordering furniture, white goods and flooring etc. We have presented the property as we feel fairly describes it but before arranging a viewing or deciding to buy, should there be anything specific you would like to know about the property please enquire. Satchells have not tested any of the appliances or carried out any form of survey and advise you to carry out your own investigations on the state, condition, structure, services, title, tenure, and council tax band of the property. Some images may have been enhanced and the contents shown may not be included in the sale. Satchells routinely refer to 3rd party services for which we receive an income from their fee. If you would like us to refer you to one of these services please ask one of our staff who will pass your details on. We advise you check the availability of the property on the day of your viewing.



Ground Floor



For illustrative purposes only - NOT TO SCALE - Measurements shown are approximate. The size and position of doors, windows, appliances and other features are approximate.
Plan produced using PlanUp.