



BarrettMove



70 Marlow Bottom, Marlow, Buckinghamshire SL7 3NB
Offers in Excess of £650,000 - Freehold



PROPERTY SUMMARY

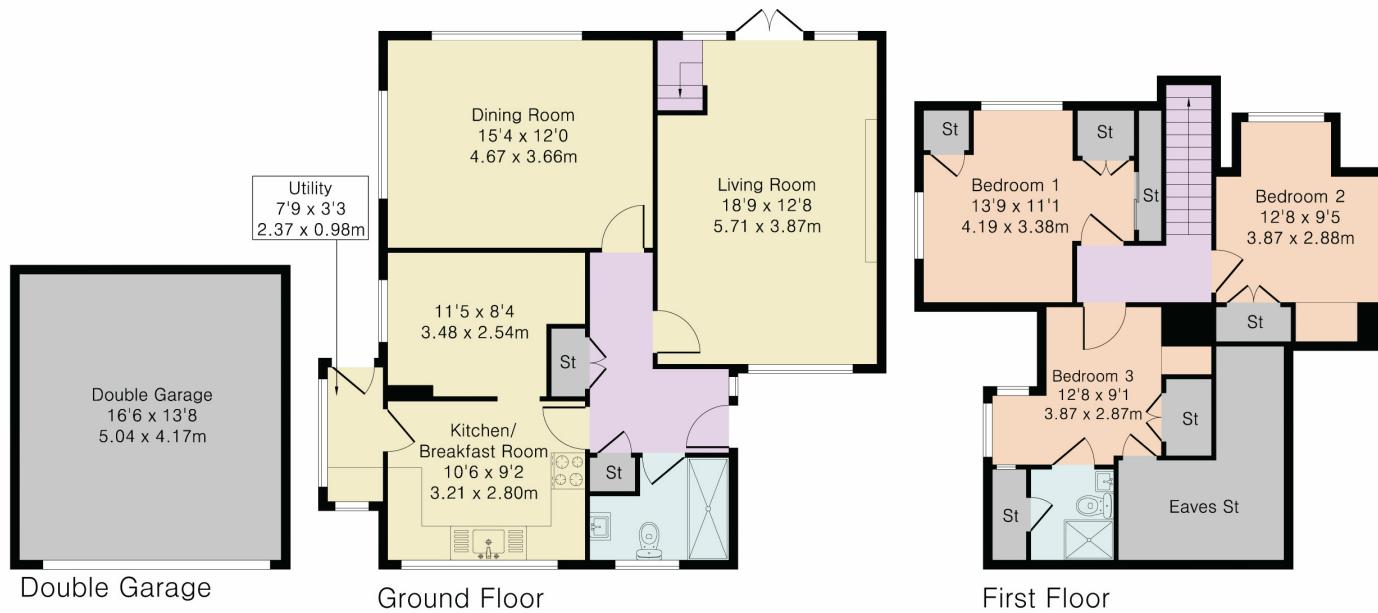
Barrett Move presents a charming, chain free, detached chalet bungalow with garage and a good sized garden in Marlow Bottom.

POINTS OF INTEREST

- *****CHAIN FREE*****
- Double garage and off street parking
- Highly recommended for viewing
- Short walk to Burford School
- Potential to extend/renovate
- Close to village amenities and woodland walks



Approximate Gross Internal Area 1469 sq ft – 136 sq m
 Ground Floor Area 780 sq ft – 72 sq m
 First Floor Area 439 sq ft – 41 sq m
 Garage Area 250 sq ft – 23 sq m



Although Pink Plan Ltd ensures the highest level of accuracy, measurements of doors, windows and rooms are approximate and no responsibility is taken for error, omission or misstatement. These plans are for representation purposes only as defined by RICS code of measuring practise. No guarantee is given on total square footage of the property within this plan. The figure icon is for initial guidance only and should not be relied on as a basis of valuation.

Energy Efficiency Rating		Current	Potential
<i>Very energy efficient - lower running costs</i>			
(92+)	A		85
(81-91)	B		
(69-80)	C		
(55-68)	D		
(39-54)	E	53	
(21-38)	F		
(1-20)	G		
<i>Not energy efficient - higher running costs</i>			
England, Scotland & Wales			
EU Directive 2002/91/EC			