

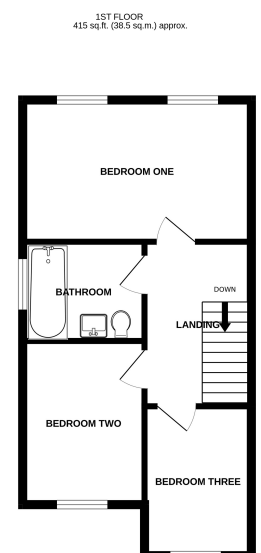
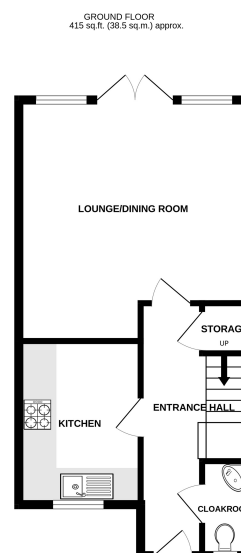
HIGH VIEW ROW

£250,000



Key Features

- ✓ A well presented end of terraced house.
- ✓ Three Bedrooms.
- ✓ Private Enclosed Garden.
- ✓ Allocated Off Road Parking Space.



TOTAL FLOOR AREA: 830 sq.ft. (77.1 sq.m.) approx.
Made with Merge-02024