



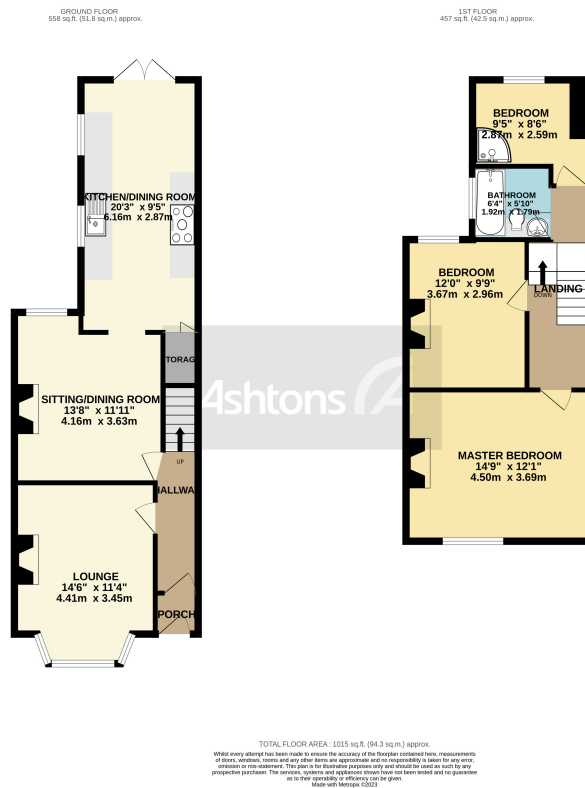
## Alexandra Street, Warrington.

### £220,000

3 Bed Mid Terrace House | Immaculate & Modern Throughout | Extended Kitchen / Dining Room |  
Low Maintenance Rear Garden | Feature Fireplaces | Close Access to Motorway Links & Amenities |  
Modern & Contemporary Fitted Kitchen/Bathroom | EPC - C | Council Tax Band B | Freehold |







VIDEO TOUR AVAILABLE. A beautiful three bedroom, bay fronted mid terrace house located in a sought after location close to amenities and motorway links. Set beyond a short terraced garden the property is finished to a high standard and offers a spacious feel throughout. The property would be suitable for any first time buyer or professional couple having plenty of space to grow into. The kitchen/dining room has been extended to create an eat-in space ideal for entertaining and includes integrated appliances. Each of the two reception rooms are warmed by fireplaces. There are three bedrooms, two of which are doubles whilst the third benefits from a handy shower - the modern master bathroom is located off the landing. To the rear the garden has been paved for low maintenance. Warmed by gas central heating throughout.



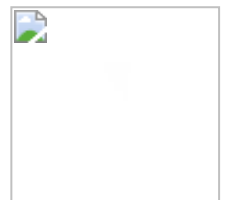
*Contact your local office  
to arrange a viewing:*

**Padgate:** 01925 479334  
**Great Sankey:** 01925 454300  
**Winwick:** 01925 232146  
**Stockton Heath:** 01925 453400  
**St. Helens:** 01744 754120  
**Wigan:** 01942 498862  
**Culcheth:** 01925 764744  
**Ashton-In-Makerfield:** 01942 364446  
**Newton-Le-Willows:** 01925 907770  
**Commercial Office:** 01925 907709  
**Lettings Head Office:** 01925 873533  
**Financial Services:** 01925 221234

**Viewing Arrangements**  
 Viewing is strictly by appointment only through  
 Ashtons Estate Agency.

**Disclaimer Property Details**  
 These particulars, whilst being believed to be accurate are set out as a general outline only for guidance and do not constitute any part of an offer or contract. Intending purchasers should not rely on them as statements of representation of fact, but must satisfy themselves by inspection or otherwise as to their accuracy. We have not carried out a detailed survey nor tested the services, appliances and specific furnishings. The measurements given are approximate. No person in this firm's employment has the authority to make or give any representation or warranty in respect of the property.

All details, photographs and floorplans are the copyright of Ashtons Estate Agency.



*How much you can borrow?*  
 Speak to a mortgage expert in your local office.

**Ashtons Financial Services**

**Ashtons.net** **rightmove**

**PrimeLocation.com** **Zoopla.co.uk**

**Ashtons**