





23 Dudley Road, Feltham TW14 8EJ
£599,950 - Freehold



PROPERTY DESCRIPTION

Substantial Four bedroom house offering spacious and flexible accommodation, the property can be used as a three bedroom house with an annexe or as a large family home. The accommodation on the ground floor comprises of an entrance hallway, two reception rooms and a good size kitchen, the annexe consists of a double bedroom, living room, conservatory, shower room and a large kitchen. Upstairs there are three bedrooms and a family bathroom. There is a generous garden to the rear and ample off road parking to the front. Please contact the vendors sole agents to arrange a viewing.

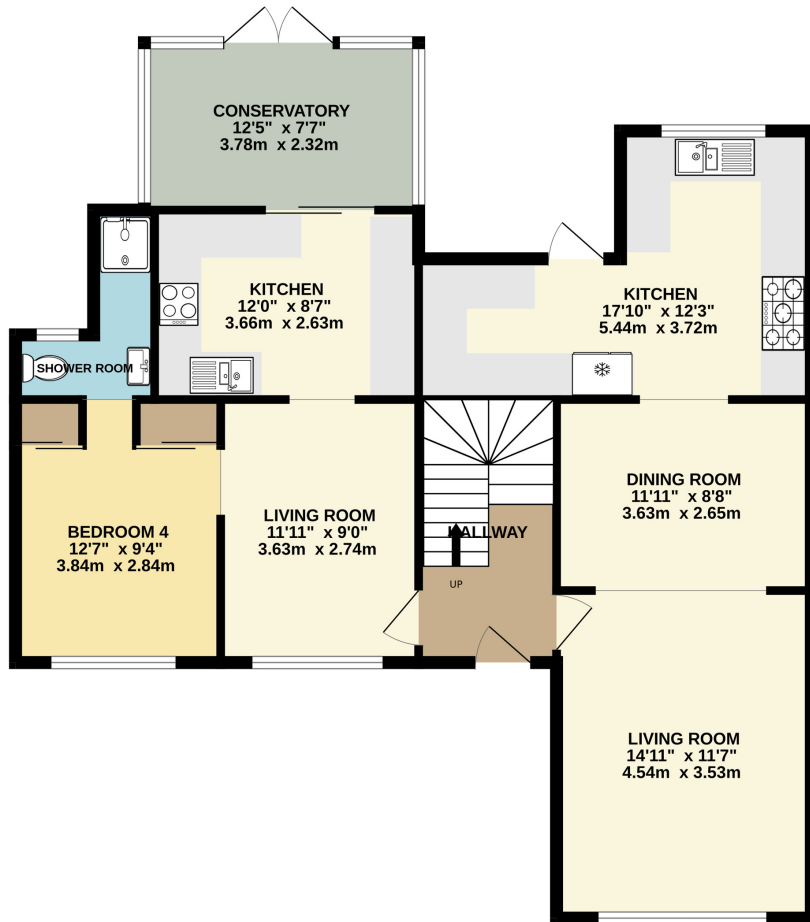
POINTS OF INTEREST

- Substantial accommodation
- Four bedrooms
- Three reception rooms
- Two bathrooms
- Two kitchens
- Self contained annexe
- Ample parking
- Viewing recommended

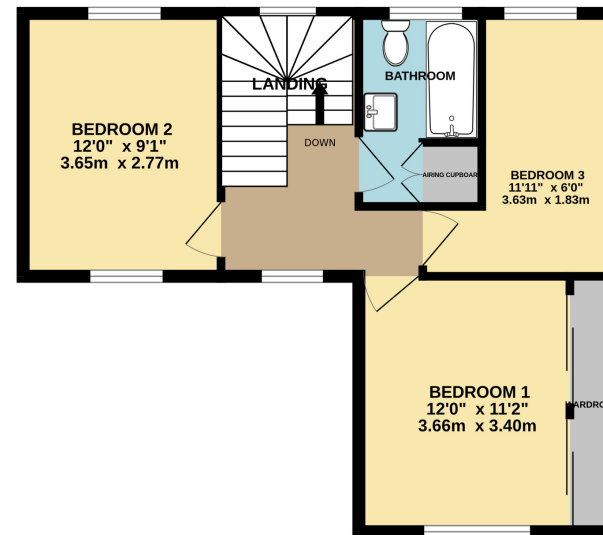




GROUND FLOOR
964 sq.ft. (89.6 sq.m.) approx.



1ST FLOOR
456 sq.ft. (42.3 sq.m.) approx.



TOTAL FLOOR AREA : 1420 sq.ft. (131.9 sq.m.) approx.

Whilst every attempt has been made to ensure the accuracy of the floorplan contained here, measurements of doors, windows, rooms and any other items are approximate and no responsibility is taken for any error, omission or mis-statement. This plan is for illustrative purposes only and should be used as such by any prospective purchaser. The services, systems and appliances shown have not been tested and no guarantee as to their operability or efficiency can be given.
Made with Metropix ©2024