



52 Wendover Road, STAINES- UPON-THAMES, TW18 3DE

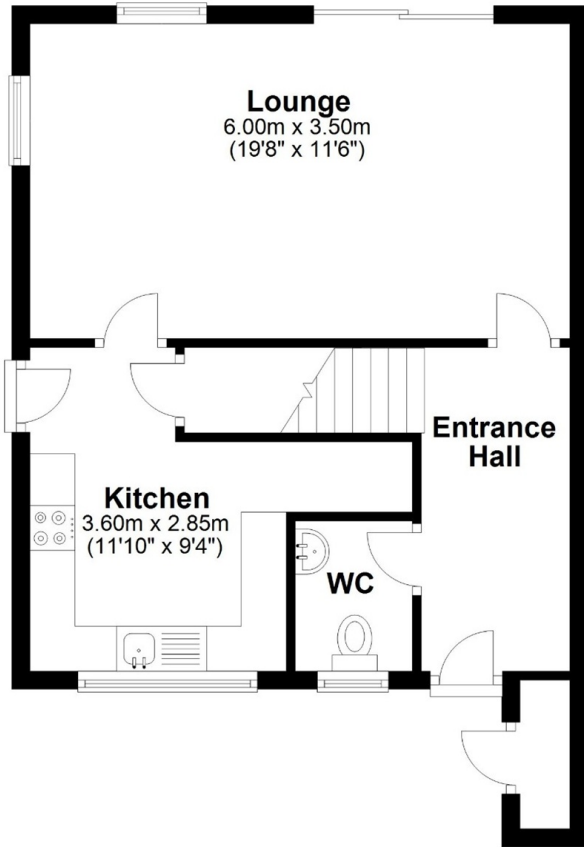
SPACIOUS SEMI-DETACHED PROPERTY LOCATED IN SMALL, SELECT CUL-DE-SAC IDEALLY LOCATED FOR TOWN CENTRE ACCESS AND LOCAL SCHOOLS. The property benefits from a spacious lounge/diner, fitted kitchen, downstairs W.C, three well-proportioned bedrooms, shower room and secluded rear garden. Unfurnished. Available 9th May. Viewings Highly Recommended!

ROOM DESCRIPTIONS

FLOORPLAN

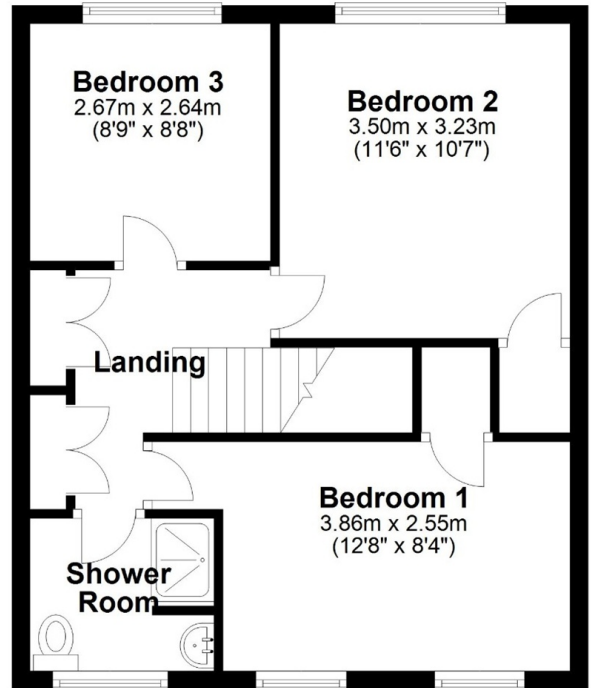
Ground Floor

Approx. 44.2 sq. metres (475.5 sq. feet)



First Floor

Approx. 43.2 sq. metres (465.0 sq. feet)



Total area: approx. 87.4 sq. metres (940.5 sq. feet)