



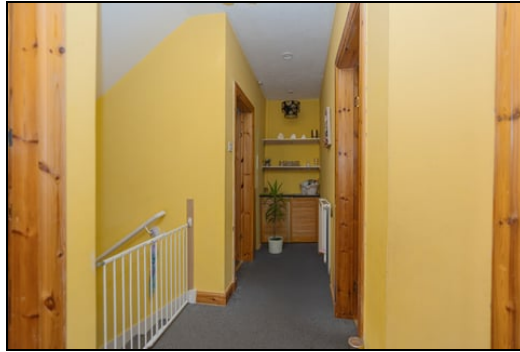
Offers Over £74,950
30 Factory Road, Cowdenbeath, Fife, KY4 9SQ

30 Factory Road, Cowdenbeath, Fife, KY4 9SQ

Delmor are pleased to present to the market this First Floor Flat in excellent order within walking distance to train station and High Street. Pleasant open views to rear over allotments and beyond. The property briefly comprises entrance door to stairs to first floor. Spacious lounge, Modern fitted kitchen incorporating electric hob and oven, 2 double bedrooms, shower room, gas central heating, double glazing, gardens and shed.

Entrance

Top Hall



Lounge



4.50m x 2.67m (14' 9" x 8' 9")



Kitchen



3.38m x 2.74m (11' 1" x 9' 0")

Bedroom 1



4.67m x 3.51m (15' 4" x 11' 6")





Bedroom 2



4.37m x 2.79m (14' 4" x 9' 2")

Shower Room



1.96m x 1.70m (6' 5" x 5' 7")

Gardens



SONIC TAPE

All measurements have been taken using a sonic tape measure and therefore, may be subject to a small margin of error.

MEASUREMENTS

All measurements are approximate.

APPLIANCES/SERVICES

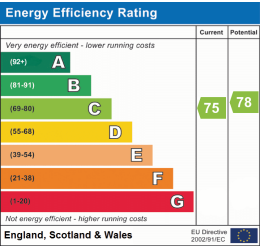
The mention of any appliances and/or services within these Sales Particulars does not imply they are in fully working order.

MORTGAGE & FINANCIAL ADVICE

Qualified Mortgage and Financial Consultants can provide you with up to the minute information on many of the rates available. To arrange an appointment telephone this office. YOUR HOME IS AT RISK IF YOU DO NOT KEEP UP REPAYMENTS ON A MORTGAGE OR OTHER LOANS SECURED ON IT. Full written quotation available on request. A suitable life policy may be required. Loans are subject to status. Minimum age 18.

FREE VALUATION

How much is your property worth?. We can provide you with the answer. We offer a free valuation service without cost or obligation. Please call this office for an appointment.



FIRST FLOOR

