



Day & Co  
ESTATE AGENTS

28 Cavendish Street  
Keighley  
BD21 3RG



92a Long Lee Lane, Keighley,  
West Yorkshire, BD21 4RS

£200,000

T: 01535 664609

W: [www.dayandcoestateagents.co.uk](http://www.dayandcoestateagents.co.uk)

E: [keighley@dayandcoestateagents.co.uk](mailto:keighley@dayandcoestateagents.co.uk)

- EXTENDED SEMI-DETACHED HOUSE
- THREE BEDROOMS
- GOOD SIZED GARDENS, PARKING, GARAGE

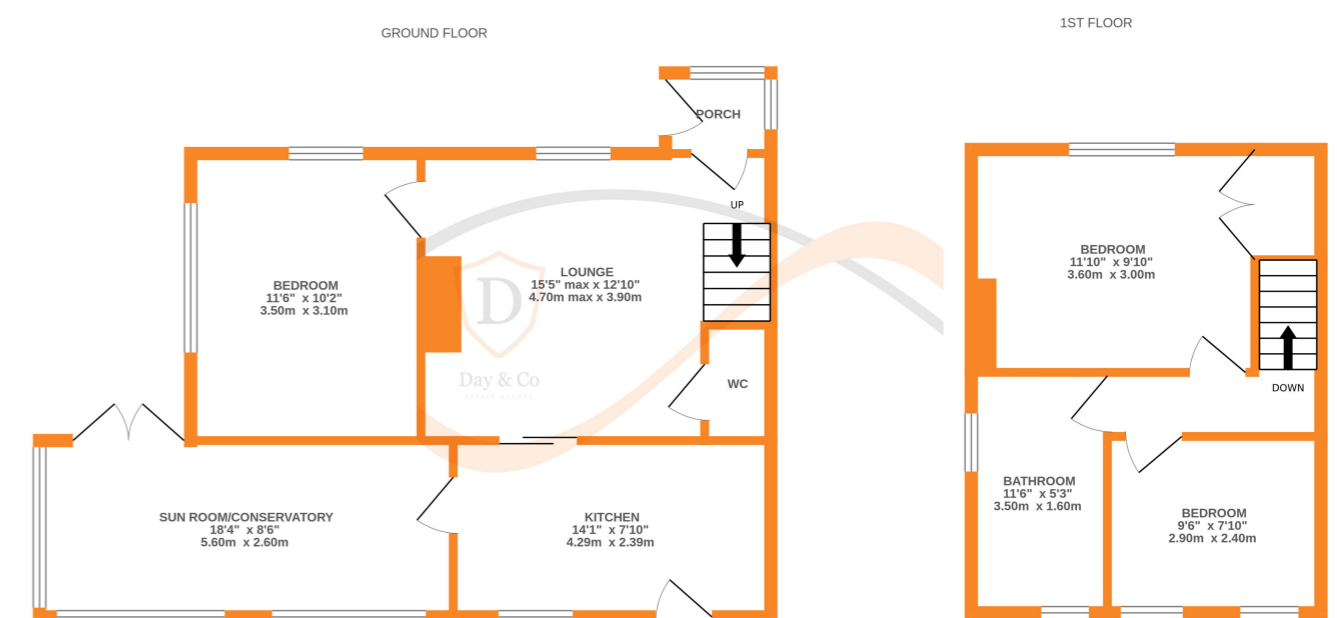
- MATURE SEMI-DETACHED HOUSE
- SUN ROOM/CONSERVATORY
- EPC Rating D

## SUMMARY

\*\* A HIDDEN GEM, DELIGHTFUL EXTENDED SEMI-DETACHED, THREE BEDROOMS, SUN ROOM/CONSERVATORY, GOOD SIZED GARDENS, PARKING & GARAGE, EPC RATING D \*\*

## FULL DESCRIPTION

A viewing of this property is recommended to fully appreciate this delightful home and its location which is tucked away off Long Lee Lane. This well presented mature semi-detached house has been extended and enjoys good sized gardens, parking along with a detached garage. In brief the accommodation comprises of an entrance porch, lounge with multi fuel fire, window to the front elevation, ground floor bedroom with windows to two elevations, cloaks/w.c., kitchen with a range of fitted wall and base units, worktops, sink, oven, hob, extractor, plumb for washer, window and door to the rear, sunroom/conservatory which is a real feature of this property which is currently used as a dining room with sitting area, with windows to the rear and side, French doors to the front opening onto the garden. First Floor - The main bedroom can be found at the front with built in wardrobes/cupboards, good sized second bedroom to the rear with two windows and completing the accommodation is a large bathroom comprising of rectangular bath with shower over, w.c., wash basin, towel radiator, windows to the rear and side. Gas Central Heating & Double Glazing. Outside - Good sized gardens which must be viewed to be fully appreciated, utility outhouse to the rear, parking and detached garage. Access to this property is down a single driveway which gives shared access to the other properties. EPC Rating D.



Whilst every attempt has been made to ensure the accuracy of the floorplan contained here, measurements of doors, windows, rooms and any other items are approximate and no responsibility is taken for any error, omission or mis-statement. This plan is for illustrative purposes only and should be used as such by any prospective purchaser. The services, systems and appliances shown have not been tested and no guarantee as to their operability or efficiency can be given.  
Made with Metropix ©2024