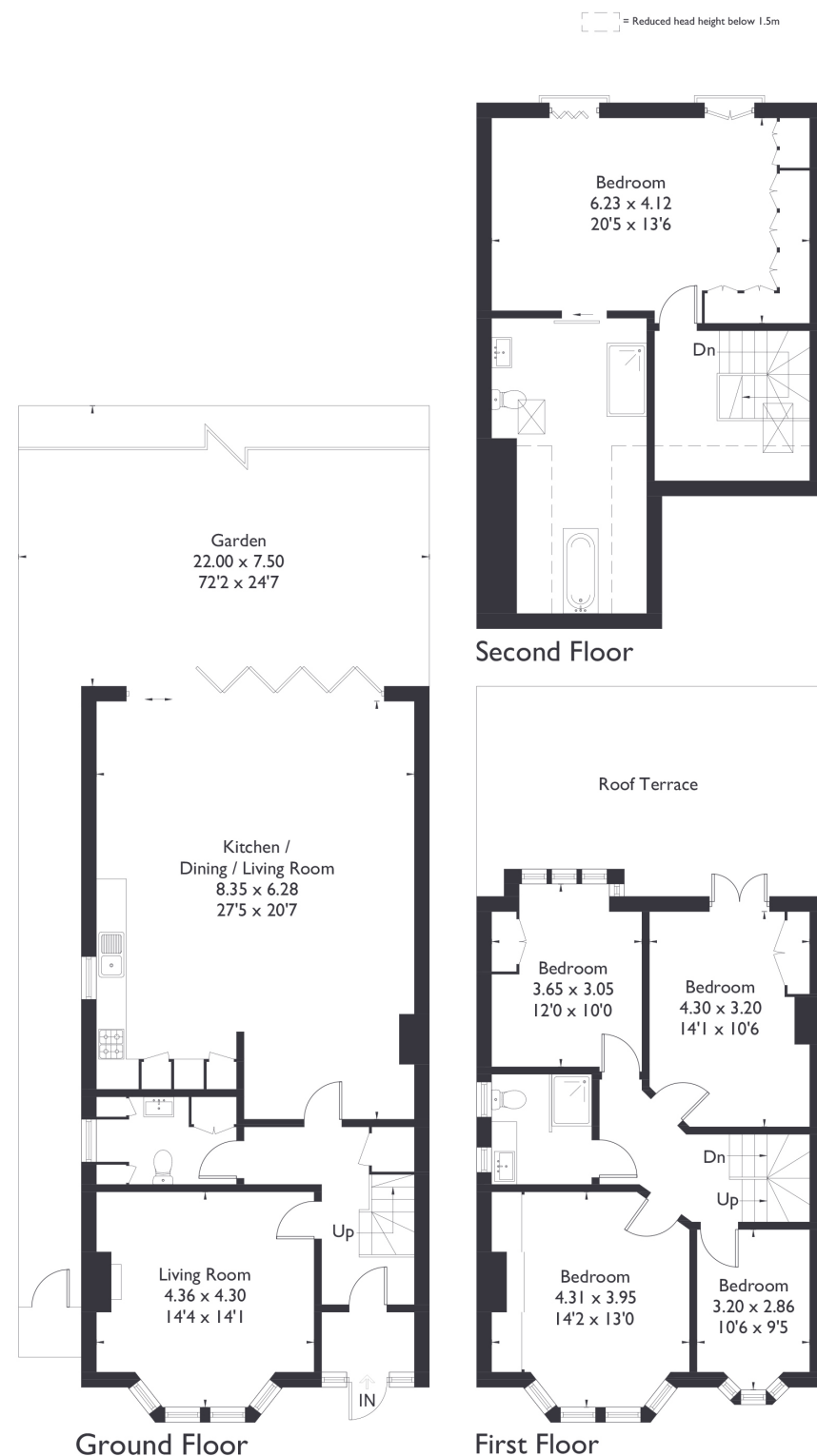


Elers Road, W13

Approximate Floor Area = 203.1 sq m / 2186 sq ft



5 BEDROOM HOUSE

Elers Road, W13

GUIDE PRICE £2,000,000 - £2,200,000

Welcome to this stunning five bedroom, two bathroom home located on the highly sought after Elers Road. This exceptional property boasts elegant interiors and thoughtful design throughout. Upon entering, you're welcomed by a spacious reception room featuring a charming log burner and large bay windows, creating a warm and inviting atmosphere. Moving further in, you'll find a convenient WC/ utility room that leads to a breathtaking open plan kitchen and living space.

FEATURES

- Five Bedrooms
- Two Bathrooms/ Downstairs W/C and Utility
- Open Plan Kitchen/Living
- First Floor Roof Terrace
- Views of Lammas Park
- Driveway Parking
- Northfields Station
- EPC Rating C



From here, you'll enjoy uninterrupted views of Lammas Park, with the beautifully landscaped garden offering a decked area and a pergola—perfect for outdoor entertaining and décor.

The first floor features four well-proportioned bedrooms and a delightful roof terrace, ideal for enjoying peaceful moments outdoors. Ascending to the top floor, you'll discover the luxurious master suite featuring two Juliet balconies, complete with underfloor heating, beautifully designed interiors, and a spa-like en suite bathroom—a true sanctuary. EPC Rating C.

