

strata

Oporto

Four bedroom home

One of our signature types. It attracts those that love design and life. It's exciting, atmospheric and has a jaw-drop master loft suite.



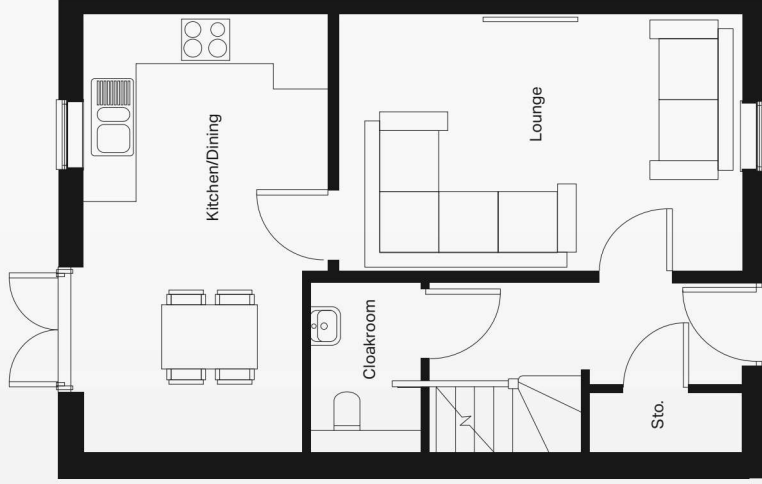
We believe that 'home' is just about the most universal and important thing there is. Home is so much more than a shelter from the elements it is a place where you can relax, dream and be yourself. Every home should have a story and we are incredibly proud to be a part of that story for our customers.

We love Scandinavian design and this influence flows through our homes. Large windows, high ceilings and clean lines in the finer details create a feeling of space and light. We hope you'll love our homes and much as we have loved designing them for you.

Gemma Smith, Managing Director



Layout

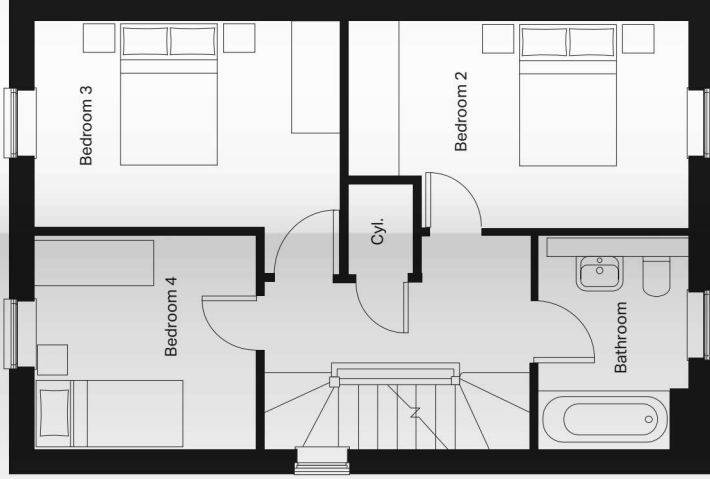


Ground floor

Kitchen/Dining (max)
5624mm x 3088mm

Lounge
3316mm x 5095mm

Cloakroom
810mm x 1571mm



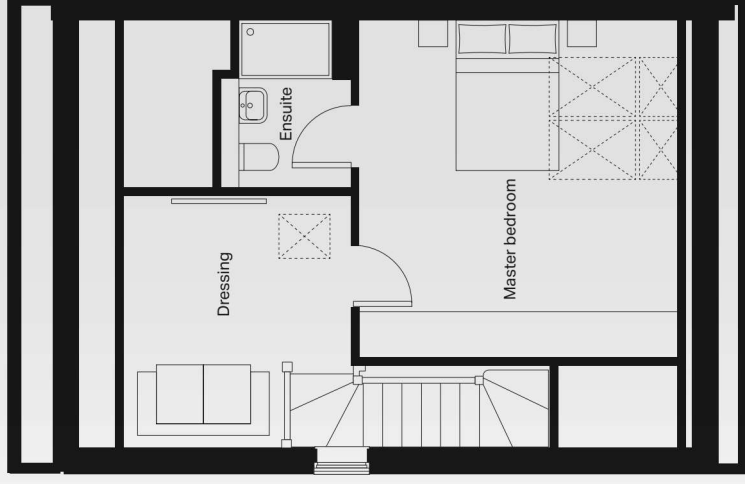
First floor

Bedroom 2 (max)
2800mm x 4337mm

Bedroom 3 (max)
3360mm x 3905mm

Bedroom 4
2731mm x 2840mm

Bathroom
2731mm x 1893mm



Second floor

Master bedroom
4551mm x 4098mm

Ensuite
2279mm x 1695mm

Dressing
3252mm x 2916mm

The Oporto is a three storey, four bedroom detached home, designed to suit busy modern lifestyles as well as providing the perfect backdrop to relaxing family weekends. Its spacious, light filled lounge can easily accommodate a large corner sofa, making it the ideal spot for unwinding after work, catching up with friends or getting together as a family.

The open plan kitchen and dining area has been placed at the back of the home, with French doors leading out onto the garden. Whether it's a quick sandwich at the sun-drenched table, or a cosy evening in cooking and chatting, this beautifully designed space can be as peaceful or as sociable as you'd like it to be. The ground floor also has a cloakroom and large storage cupboard, ideal for coats, boots, vacuums and clutter.

Upstairs, there's even more storage space, along with a single and two double bedrooms, and a family bathroom with a full size bath and natural light from its front aspect window. Whether you need a place for teenagers to call their own, room to host overnight guests, or a spacious office, the first floor makes it easy to create the home that works for you.

Climbing the stairs to the second floor you'll find a stunning loft-style master bedroom suite, with dressing area and high specification ensuite shower room, flooded with light by its unique quadruple Velux feature. Whether you're getting ready for work with a refreshing shower and carefully chosen outfit from your fitted wardrobe, or revelling in a rare lie in, this room will make starting every day a pleasure.

Feature rooms







Specification

Outside

- Landscaped front garden
- UPVC windows
- UPVC front door with multi point lock

Inside

- White emulsion paint finish to walls & ceilings
- White gloss paint finish to woodwork
- Gas central heating with boiler
- Smoke detectors on each floor

Kitchen

- Contemporary choice of doors, handles & worktops
- Stainless kitchen sink and mixer tap
- Single electric oven, hob & extractor

Lounge

- Television & telephone point

Bedroom

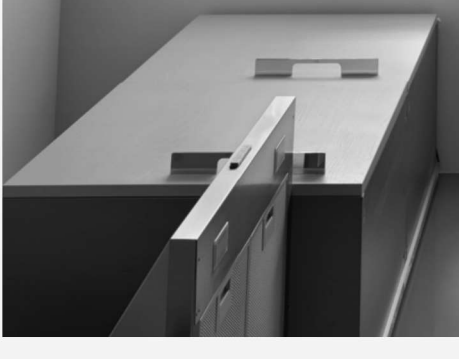
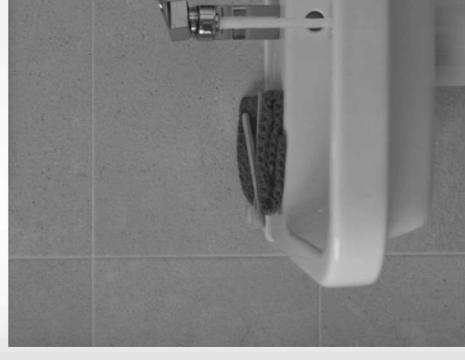
- Contemporary choice of fitted wardrobes to master bedroom
- Television point

Bathroom & ensuite

- Luxury bathroom and ensuite sanitaryware
- Choice of contemporary wall tiles to wet areas

Warranty

- 10 year structural warranty





Cherish

Shirland, DE55 6AX