

Guide Price
£199,950
Leasehold



THOMAS CONNOLLY

ESTATE AGENTS | LETTING AGENTS | NEW HOMES | PROPERTY MANAGEMENT



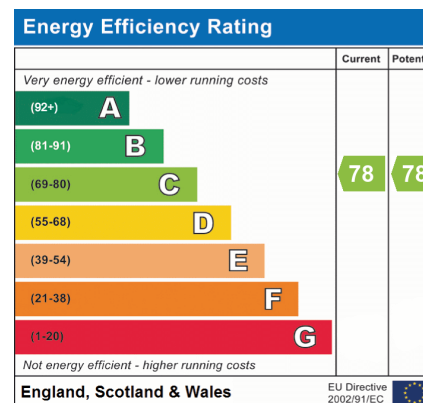
Summary of Property

Thomas Connolly Estate Agents are delighted to present this first floor, one double bedroom apartment situated in the highly desirable location of Oakgrove, benefitting from a vast range of linear parks, schools, Willen Lake, Central Milton Keynes, Kingston Shopping Centre and the M1. The area is newly developed with local amenities and walks along the River Ouzel.

Accommodation briefly comprises; entrance hall, open plan kitchen / sitting room with balcony, master bedroom and a family bathroom. This property also benefits from lift access and allocated parking for one car.

Please note the following charges: Ground rent £150pa, Service Charge £2016.20pa. There are 237 years left on the lease.

Please contact Thomas Connolly Estate Agents for further information relating to this property or to confirm viewing arrangements.



Room Descriptions

FIRST FLOOR APARTMENT

ENTRANCE HALL

OPEN PLAN KITCHEN / SITTING ROOM

23' 1" x 10' 5" (7.04m x 3.17m)

BALCONY OFF SITTING ROOM

MASTER BEDROOM

BUILT-IN-WARDROBE

14' 7" x 8' 5" (4.45m x 2.57m)

BATHROOM

PARKING FOR ONE CAR

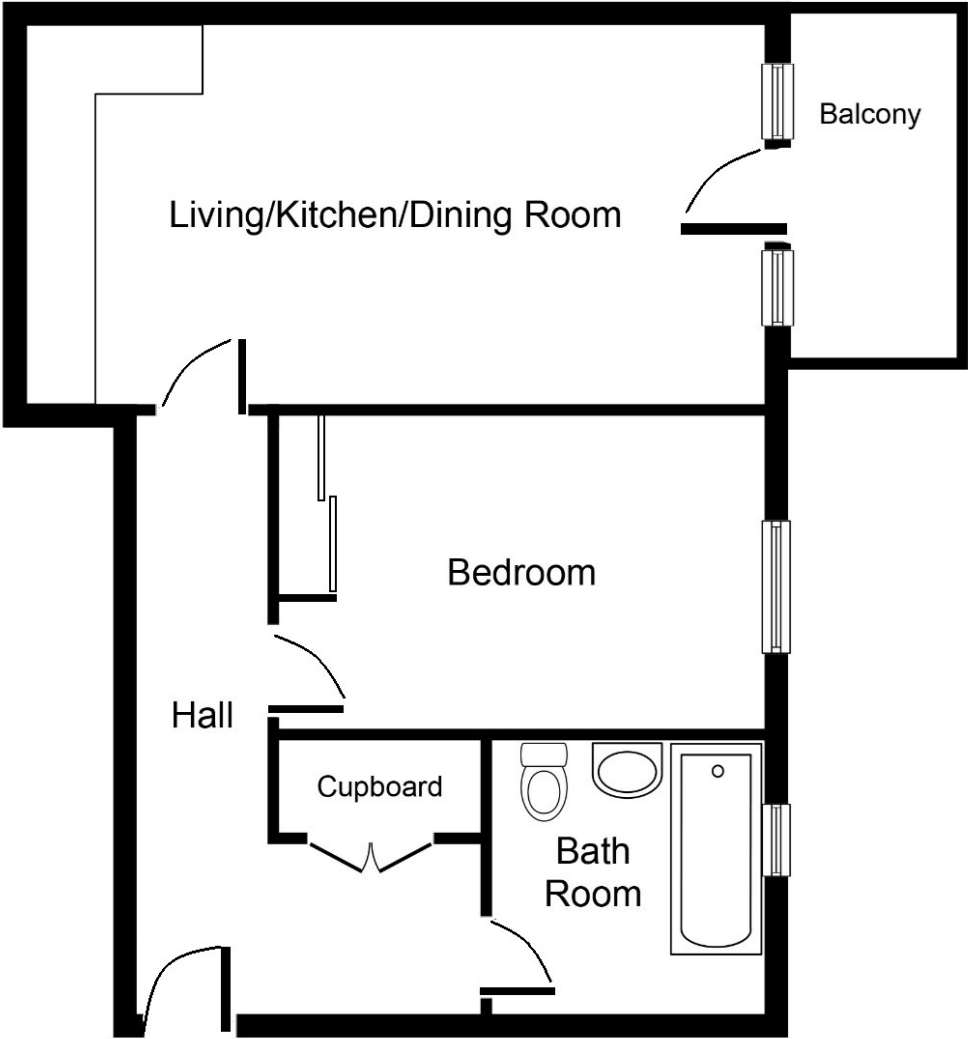
PLEASE NOTE:

These property particulars do not constitute part or all of an offer or contract. All measurements are stated for guidance purposes only and may be incorrect. Details of any contents mentioned are supplied for guidance only and must also be considered as potentially incorrect. Thomas Connolly Estate Agents advise perspective buyers to recheck all measurements prior to committing to any expense. We confirm we have not tested any apparatus, equipment, fixtures, fittings or services and it is within the prospective buyers interests to check the working condition of any appliances prior to exchange of contracts. Thomas Connolly Estate Agents has not sought to verify the legal title of the property and the buyers must obtain verification from their solicitor.



THOMAS CONNOLLY

ESTATE AGENTS | LETTING AGENTS | NEW HOMES | PROPERTY MANAGEMENT



Ground Floor

Whilst every attempt has been made to ensure the accuracy of the floor plan contained here, measurements of doors, windows, rooms and any other items are approximate and no responsibility is taken for any error, omission, or mis-statement This plan is for illustrative purposes only and should be used as such by any prospective purchaser or tenant. The services, systems and appliances shown have not been tested and no guarantee as to their operability or efficiency can be given.

Copyright V360 Ltd 2015 www.houseviz.com