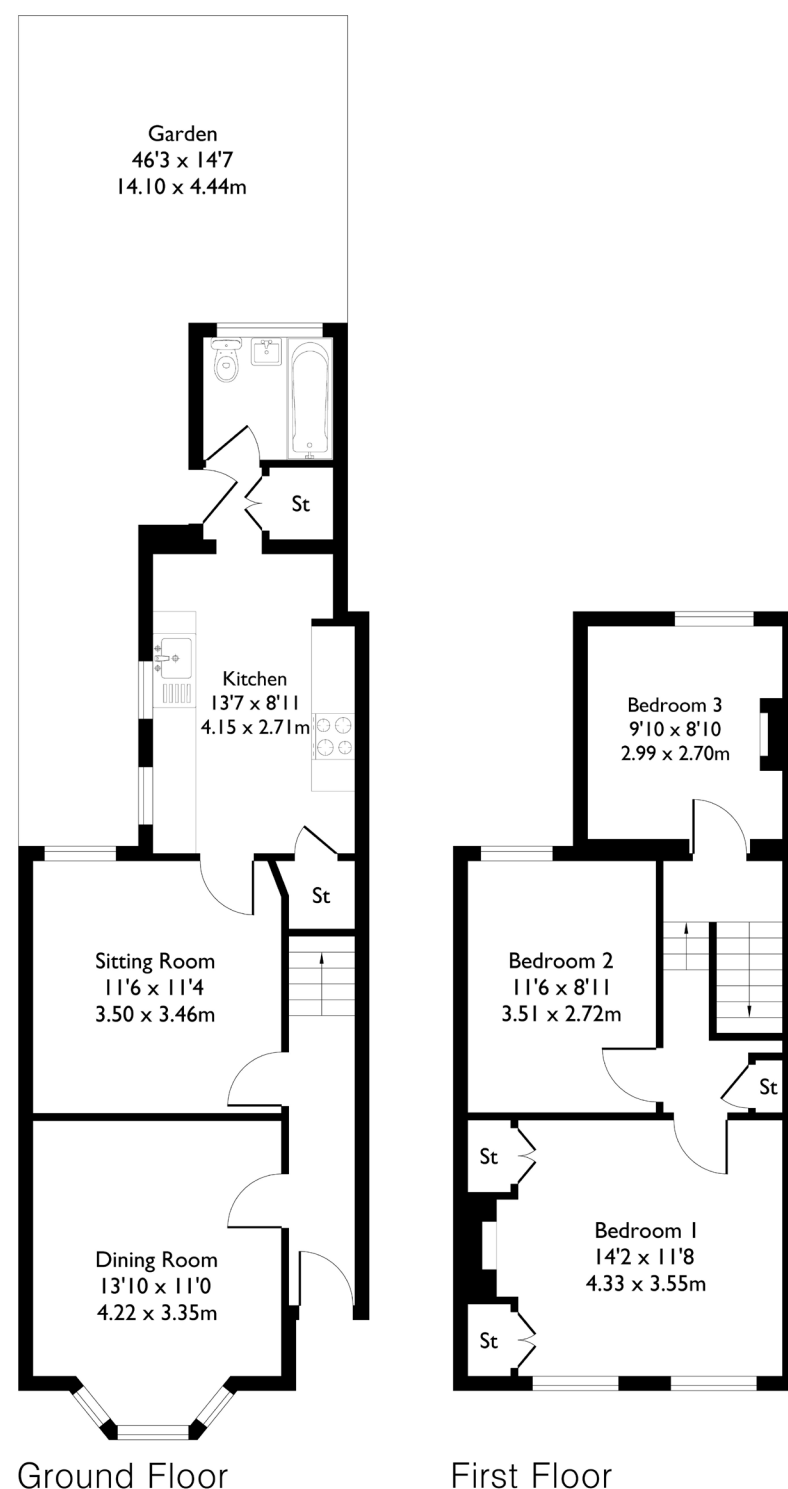


Eccleston Road, London, W13

Approximate Floor Area = 89.3 sq m / 962 sq ft



3 BEDROOM HOUSE

Eccleston Road, W13

£750,000

Welcome to this well presented terraced home in the heart of West Ealing, offering three bedrooms and one bathroom.

The property features two reception rooms, a kitchen leading to a family bathroom on the ground floor, and direct access to an east-facing garden. Well maintained throughout, it benefits from plenty of natural light and useful storage space.

FEATURES

- Three Bedrooms
- One Family Bathroom
- Separate Kitchen/ Living/ Dining
- Private Garden
- Potential to Extend (STPP)
- West Ealing Station (Elizabeth Line)
- St Johns Primary School
- EPC Rating C



3 BEDROOM HOUSE

Eccleston Road, W13

Ideally located, this home is within easy reach of West Ealing Station (Elizabeth Line), Ealing Broadway (Central), Northfields (Piccadilly), plus local shops/amenities. It also falls within the catchment area of St John's Primary School.

Perfect as a first-time purchase, an investment opportunity, or for those looking to upsize or downsize within the area.

