



diamond
PROPERTIES



16 Norwood Terrace, Hyde Park, Leeds, West Yorkshire. LS6 1EA.

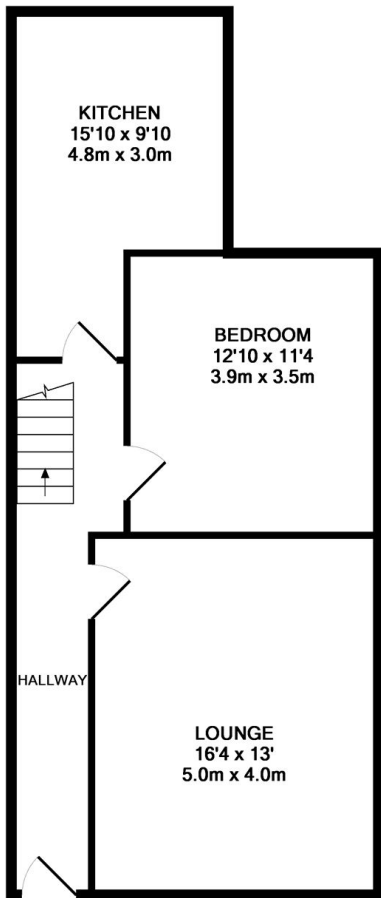
£2,581 Freehold

- Modern and Stylish Property
- Six Bedrooms
- Two Bathrooms
- Great Location
- Available 01.07.2022
- £99PPPW

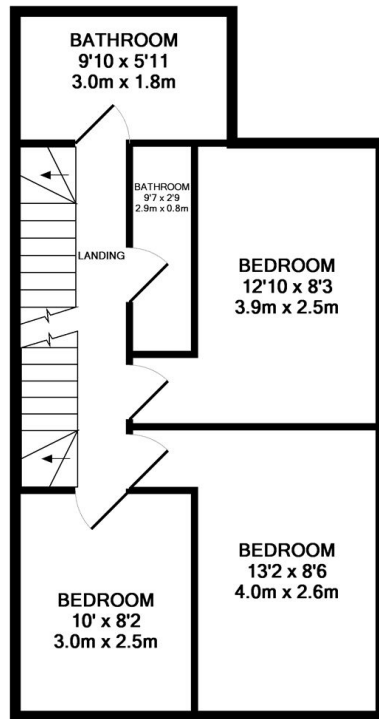
16 Norwood Terrace, Hyde Park, Leeds, West Yorkshire. LS6 1EA.

£2,581 Freehold

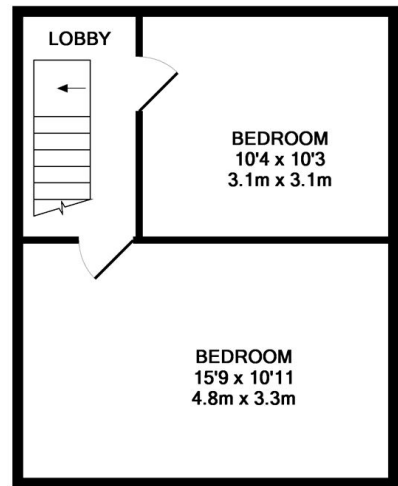
Diamond Properties are pleased to be able to offer to let this five bedroom, two bathroom student property that is located in Hyde Park, close to Burley Park Train station and the 24 HR Co-op, this really is an excellent property! Recently refurbished to a high standard, this property is stylish and modern throughout! Briefly comprising of a large kitchen and lounge with loads of great storage and a plethora of mod cons, all set on a modern laminate and tiled flooring. All the bedrooms are doubles. With two tiled bathrooms offering one with a bath and one with a shower, this is a cracking house, with great furniture and decorated to a high standard. Get a viewing before it is gone!!!



GROUND FLOOR
APPROX. FLOOR
AREA 593 SQ.FT.
(55.1 SQ.M.)



1ST FLOOR
APPROX. FLOOR
AREA 490 SQ.FT.
(45.5 SQ.M.)



2ND FLOOR
APPROX. FLOOR
AREA 365 SQ.FT.
(33.9 SQ.M.)

TOTAL APPROX. FLOOR AREA 1448 SQ.FT. (134.5 SQ.M.)

Whilst every attempt has been made to ensure the accuracy of the floor plan contained here, measurements of doors, windows, rooms and any other items are approximate and no responsibility is taken for any error, omission, or mis-statement. This plan is for illustrative purposes only and should be used as such by any prospective purchaser. The services, systems and appliances shown have not been tested and no guarantee as to their operability or efficiency can be given
Made with Metropix ©2017

