

3 Bedroom(s), Detached House, Freehold

Stone Font Grove, Cantley, Doncaster.



- 3D Virtual Tour Available
- Three Bedroom Detached Family Home
- Driveway and Garage
- Lounge
- Nearby Schools and Amenities

- No Chain
- Beautifully Presented Rear Enclosed Garden
- Modern Kitchen Diner
- Family Bathroom
- Utility and Ground Floor W/C

£265,000
For Sale

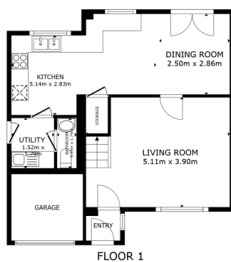
Book your viewing today Tel: 01302 247754

Owner's View

We live on a lovely, quiet cul-de-sac close to all amenities. The low maintenance garden benefits from the sun all day, perfect for outdoor living. We'll be sad to move on from our lovely house, and neighbours. Hopefully another family will enjoy this house as much as we have!

Ground Floor

Floor Plan



GROSS INTERNAL AREA
FLOOR: 33.4 sqm FLOOR: 2.15 sqm
EXCLUDED AREAS: GARAGE 6.0 sqm
TOTAL: 39.6 sqm
SIZES AND DIMENSIONS ARE APPROXIMATE, ACTUAL MAY VARY.

Matterport

Entry



Lounge



Kitchen Diner

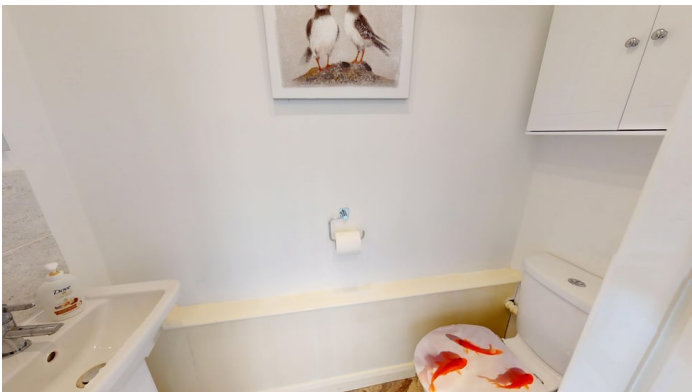




Utility

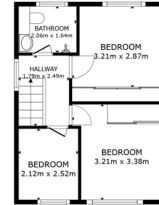


W/C



First Floor

Floor Plan



FLOOR 2

BRICKS INTERNAL AREA
FLOOR 1: 23.54 m² FLOOR 2: 25.0 m²
EXCLUDED AREAS: GARAGE 6.0 m²
TOTAL: 88.5 m²

SIZES AND DIMENSIONS ARE APPROXIMATE. ACTUAL MAY VARY.

Matterport

Master Bedroom



Bedroom





Bedroom



Family Bathroom



Externals

Front Aspect



Rear Garden



Property Information

Council Tax Band - C

Utilities - Mains Gas, Mains Electricity, Mains Water

Water Meter - Yes

Tenure - Freehold

Solar Panels - No

Space Heating System - Gas Boiler with radiators

Approximate Heating System Installation Date - 4/24/2019

Water Heating System - Gas boiler (Combi)



Approximate Water Heating Installation Date - 4/24/2019

Boiler Location - Kitchen

Approximate Electrical System Installation Date -

Permanent Loft Ladder - No

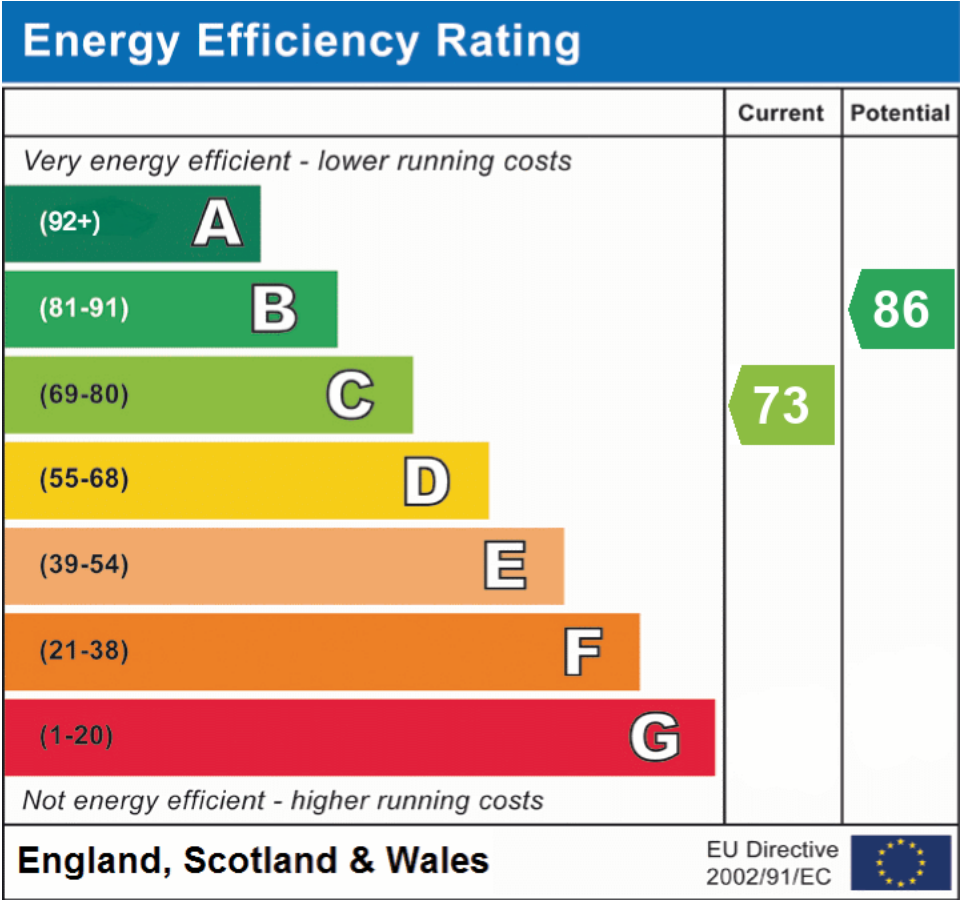
Loft Insulation - Yes

Loft Boarded out – Yes

Accessibility - Wet room/level access shower

Whilst every effort is made to ensure that the information contained in these particulars is reliable, they do not constitute or form part of an offer or any contract. The Property Hive accept no liability for the accuracy of the contents, and therefore they should be independently verified by prospective buyers or tenants before agreeing an offer. All measurements provided are approximate and should be verified before exchange of contracts. No appliances, fixtures or fittings have been tested and should be checked by the buyer before exchange of contracts to ensure they are in good working order.

Energy Performance Certificate



All measurements provided are approximate and should be verified before exchange of contracts. No appliances have been tested and should be checked to ensure they are in good working order.