



86 Tenby Grove, Kingsmead, Milton Keynes, Buckinghamshire, MK4 4HB

£190,000 Leasehold

- Garage
- Balcony with great outlook
- Two bedroom
- First floor apartment
- Allocated parking
- Open plan living
- Ideal first purchase
- Good transport links
- EPC Rating C





BALCONY WITH GREAT OUTLOOKGARAGE***

elevation are pleased to present a delightful two bedroom first floor apartment located in the highly popular Kingsmead development with a green outlook. The property has open plan living/diner with a large adjoining kitchen, two good size bedrooms, family bathroom, single garage and allocated parking for one vehicle. There is an yearly ground rent charge of £150 and service charge of £115. To arrange a viewing call the elevation team, Keys in office

INTERIOR

Entrance Hall

Doors leading to:

Lounge Diner

6.11m x 5.41m (20' 1" x 17' 9")

Kitchen

Family Bathroom

Fitted to comprise three piece suite

Bedroom One

3.90m x 2.89m (12' 10" x 9' 6")

Bedroom Two

4m x 2.19m (13' 1" x 7' 2")

EXTERIOR

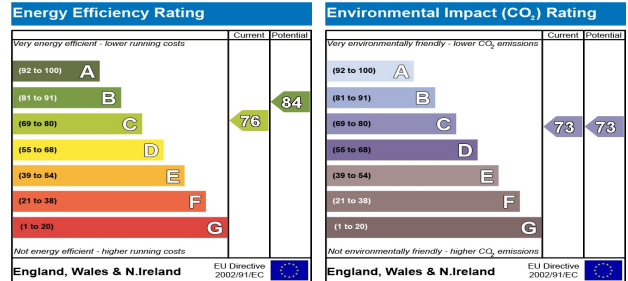
Single Garage

Allocated Parking

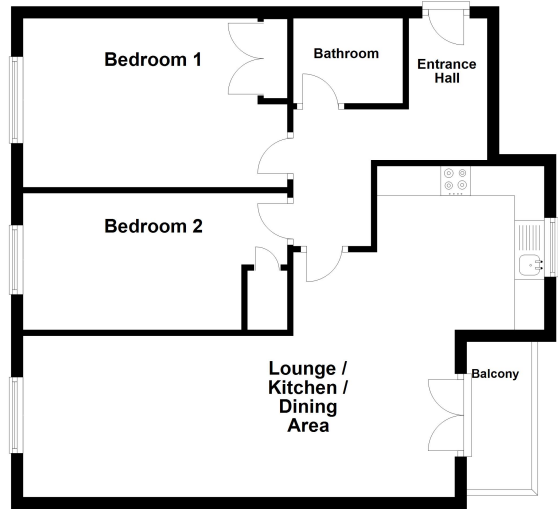
Space for one vehicle

Disclaimer

Whilst we have endeavoured to prepare our sales particulars accurately none of the services, appliances or equipment have been tested. A buyer should satisfy themselves on such matters prior to purchase. Any measurements or distances mentioned in these particulars are for guide reference only. If such particulars are fundamental to a purchase, buyers should rely on their own enquiries. All enquiries should be directed to Elevation Estate Agents in the first instance.



Ground Floor



elevation estate agents
Plan produced using PlanUp.